

Anti CASR Antibody

Catalog No: tcsa16308



Available Sizes

Size: 100μl



Specifications

Application:

WB

Species Reactivity:

Human, Mouse

Host Species:

Rabbit

Immunogen / Amino acids:

Recombinant protein of human CASR

Conjugation:

Unconjugated

Clonality:

Polyclonal

Isotype:

IgG

Form:

Liquid

Storage Buffer:

PBS with 0.02% sodium azide, 50% glycerol, pH7.3.

Recommended Dilution:

WB 1:500 - 1:2000

Storage Instruction:

Store at -20C. Avoid freeze / thaw cycles.

Alternative Names:

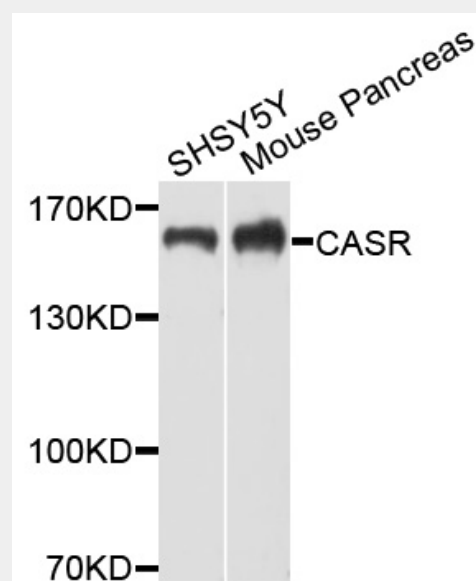
CASR antibody; Extracellular calcium-sensing receptor antibody; CaR antibody; CaSR antibody; hCasR antibody; Parathyroid cell calcium-sensing receptor 1 antibody; PCaR1 antibody; CASR antibody; GPRC2A antibody; PCAR1 antibody

SwissProt:

P41180

Product Description

The protein encoded by this gene is a G protein-coupled receptor that is expressed in the parathyroid hormone (PTH)-producing chief cells of the parathyroid gland, and the cells lining the kidney tubule. It senses small changes in circulating calcium concentration and couples this information to intracellular signaling pathways that modify PTH secretion or renal cation handling, thus this protein plays an essential role in maintaining mineral ion homeostasis. Mutations in this gene cause familial hypocalciuric hypercalcemia, familial, isolated hypoparathyroidism, and neonatal severe primary hyperparathyroidism.



Western blot analysis of extracts of various cell lines, using CASR antibody at 1:1000 dilution. Secondary antibody: HRP Goat Anti-Rabbit IgG (H+L) at 1:10000 dilution. Lysates/proteins: 25ug per lane. Blocking buffer: 3% nonfat dry milk in TBST. Detection: ECL Basic Kit. Exposure time: 30s.

All products are for RESEARCH USE ONLY. Not for diagnostic & therapeutic purposes!