

Anti BSG Antibody

Catalog No: tcsa16259



Available Sizes

Size: 100µl



Specifications

Application:

WB, IHC

Species Reactivity:

Human, Mouse

Host Species:

Rabbit

Immunogen / Amino acids:

Recombinant protein of human BSG

Conjugation:

Unconjugated

Clonality:

Polyclonal

Isotype:

IgG

Form:

Liquid

Storage Buffer:

PBS with 0.02% sodium azide, 50% glycerol, pH7.3.

Recommended Dilution:

WB 1:500 - 1:2000

IHC 1:50 - 1:200

Storage Instruction:

Store at -20C. Avoid freeze / thaw cycles.

Alternative Names:

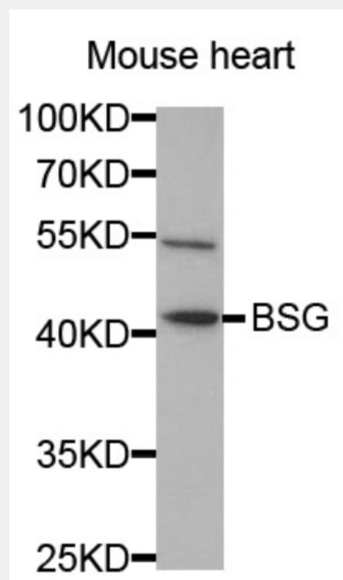
BSG antibody; Basigin antibody; 5F7 antibody; Collagenase stimulatory factor antibody; Extracellular matrix metalloproteinase inducer antibody; EMMPRIN antibody; Leukocyte activation antigen M6 antibody; OK blood group antigen antibody

SwissProt:

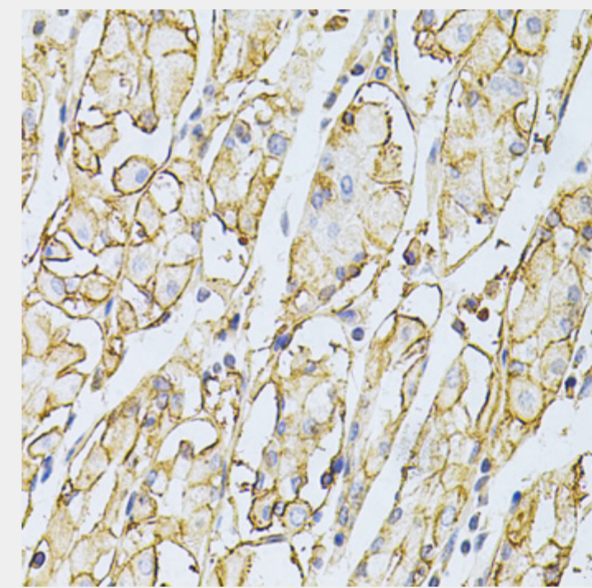
P35613

Product Description

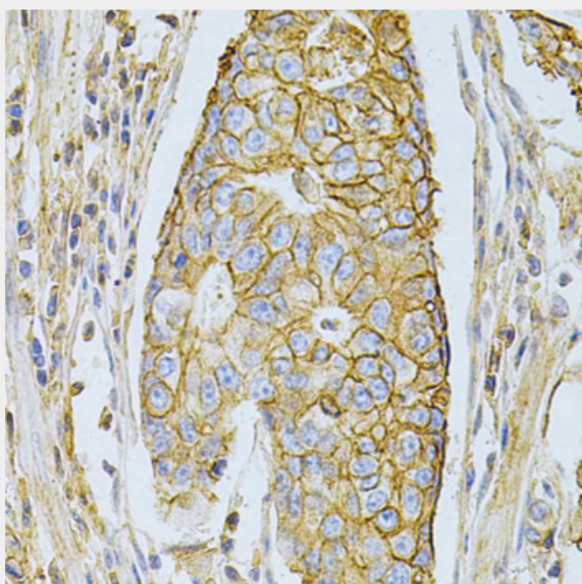
The protein encoded by this gene is a plasma membrane protein that is important in spermatogenesis, embryo implantation, neural network formation, and tumor progression. The encoded protein is also a member of the immunoglobulin superfamily. Multiple transcript variants encoding different isoforms have been found for this gene.



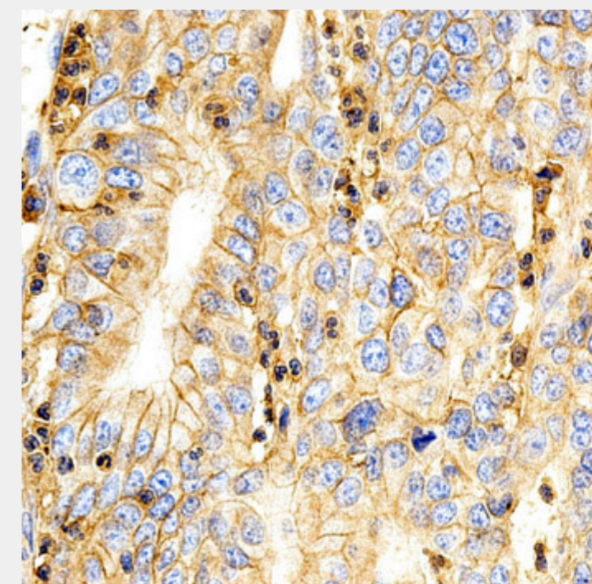
Western blot analysis of extracts of mouse heart, using BSG antibody at 1:1000 dilution. Secondary antibody: HRP Goat Anti-Rabbit IgG (H+L) at 1:10000 dilution. Lysates/proteins: 25ug per lane. Blocking buffer: 3% nonfat dry milk in TBST.



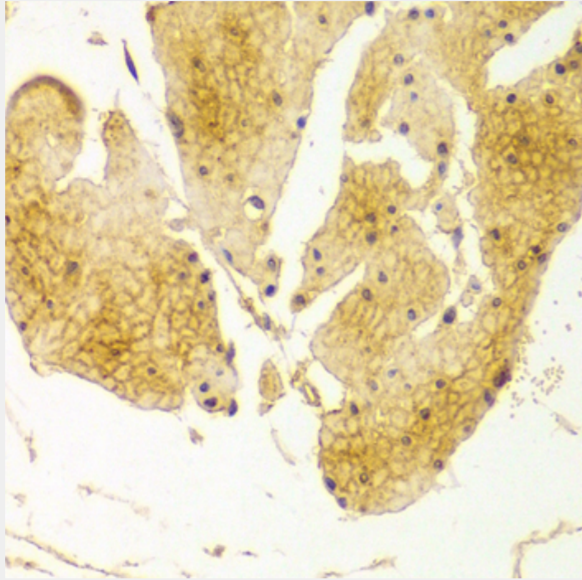
Immunohistochemistry of paraffin-embedded human stomach using BSG Antibody at dilution of 1:200 (40x lens).



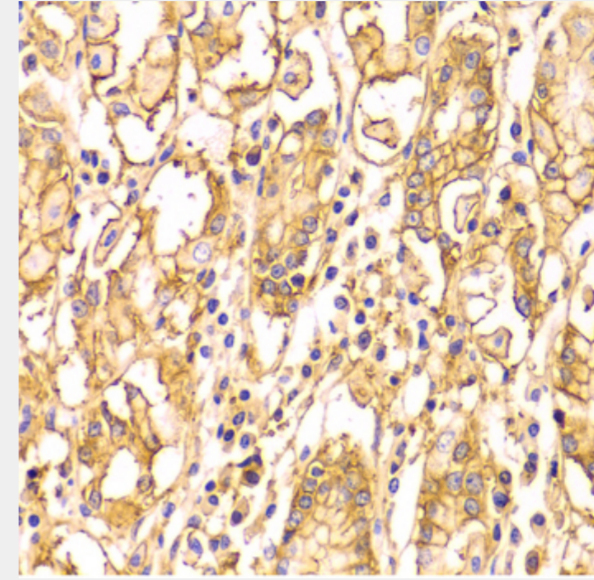
Immunohistochemistry of paraffin-embedded human gastric cancer using BSG Antibody at dilution of 1:200 (40x lens).



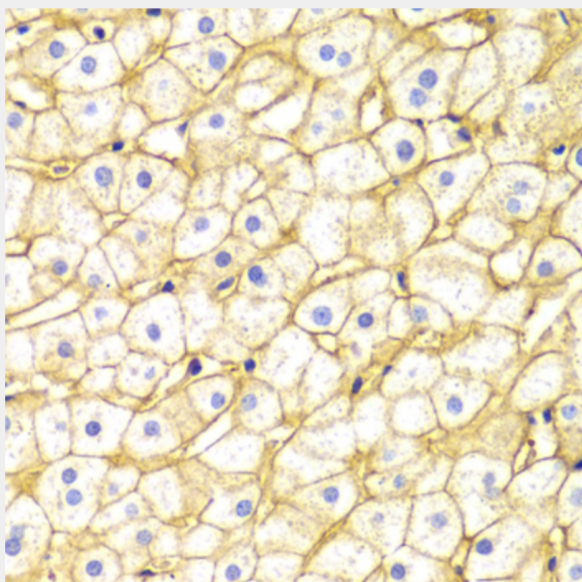
Immunohistochemistry of paraffin-embedded human gastric cancer using BSG Antibody at dilution of 1:200 (40x lens).



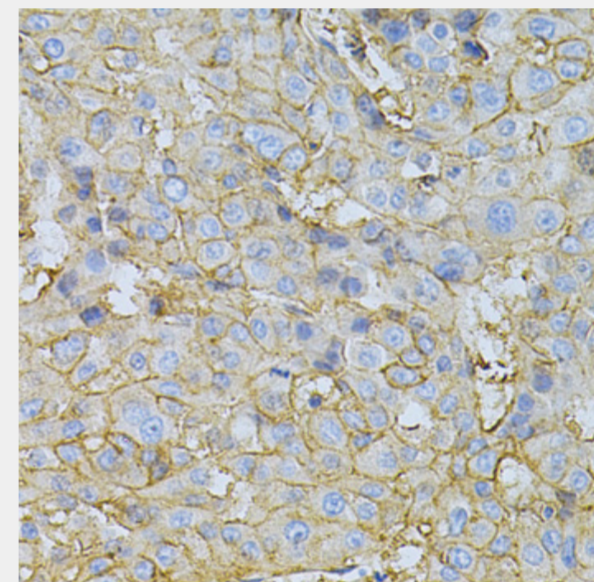
Immunohistochemistry of paraffin-embedded human esophagus using BSG Antibody at dilution of 1:100 (40x lens).



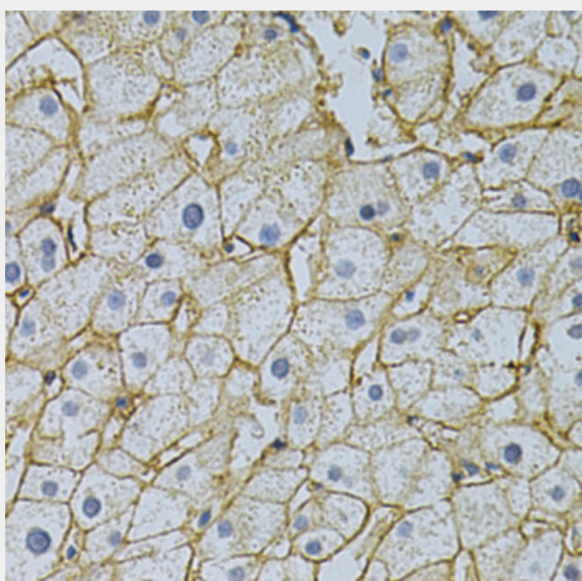
Immunohistochemistry of paraffin-embedded human stomach using BSG Antibody at dilution of 1:100 (40x lens).



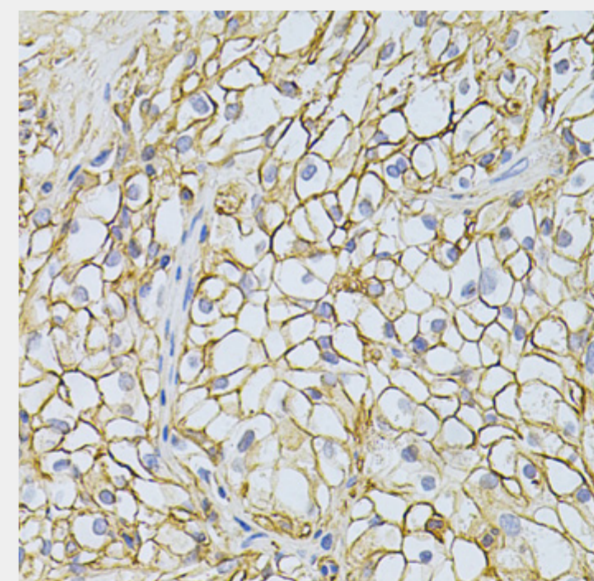
Immunohistochemistry of paraffin-embedded human liver injury using BSG Antibody at dilution of 1:100 (40x lens).



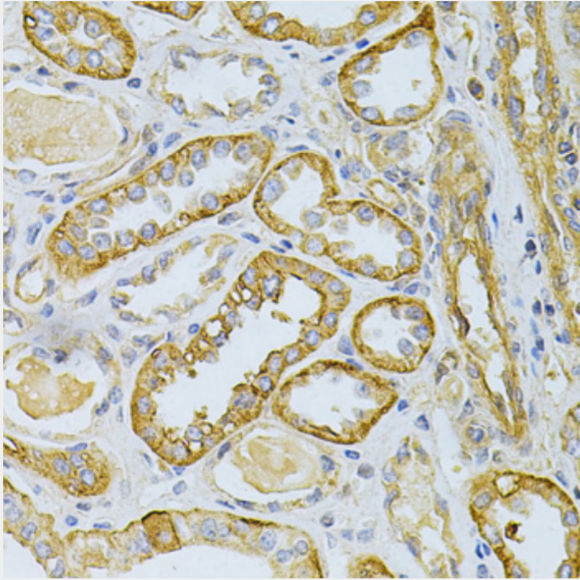
Immunohistochemistry of paraffin-embedded human liver cancer using BSG Antibody at dilution of 1:200 (40x lens).



Immunohistochemistry of paraffin-embedded human liver injury using BSG Antibody at dilution of 1:200 (40x lens).



Immunohistochemistry of paraffin-embedded human kidney using BSG Antibody at dilution of 1:200 (40x lens).



Immunohistochemistry of paraffin-embedded human kidney cancer using BSG Antibody at dilution of 1:200 (40x lens).

All products are for RESEARCH USE ONLY. Not for diagnostic & therapeutic purposes!