

Anti AMBRA1 Antibody

Catalog No: tcsa16110



Available Sizes

Size: 100μl



Specifications

Application:

WB, IHC

Species Reactivity:

Human, Mouse, Rat

Host Species:

Rabbit

Immunogen / Amino acids:

Recombinant protein of human AMBRA1

Conjugation:

Unconjugated

Clonality:

Polyclonal

Isotype:

IgG

Form:

Liquid

Storage Buffer:

PBS with 0.02% sodium azide, 50% glycerol, pH7.3.

Recommended Dilution:

WB 1:500 - 1:2000

IHC 1:50 - 1:200

Storage Instruction:

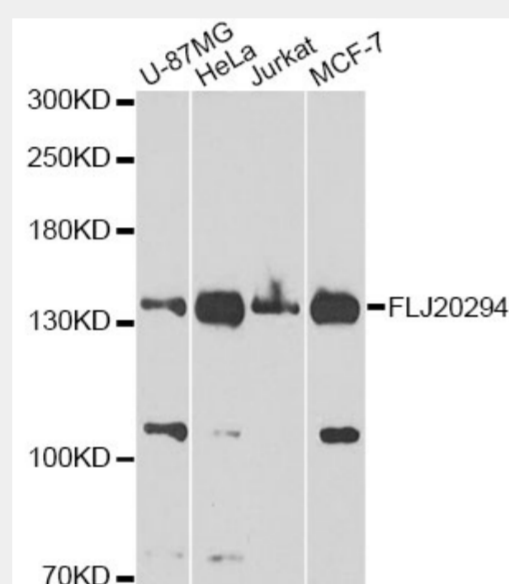
Store at -20C. Avoid freeze / thaw cycles.

Alternative Names:

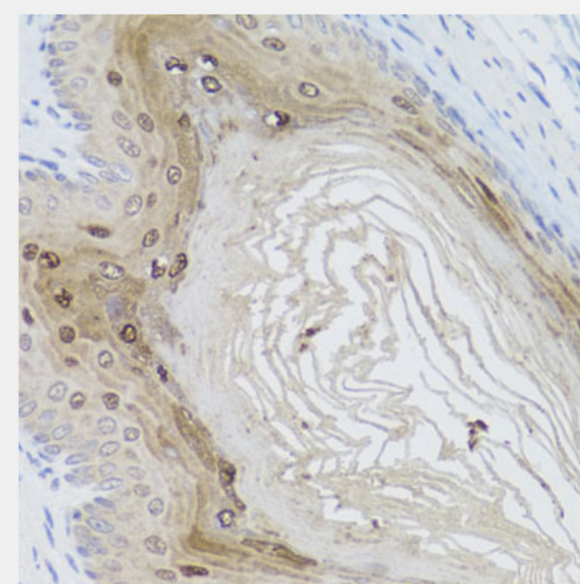
AMBRA1 antibody; Activating molecule in BECN1-regulated autophagy protein 1 antibody; AMBRA1 antibody; KIAA1736 antibody

SwissProt:

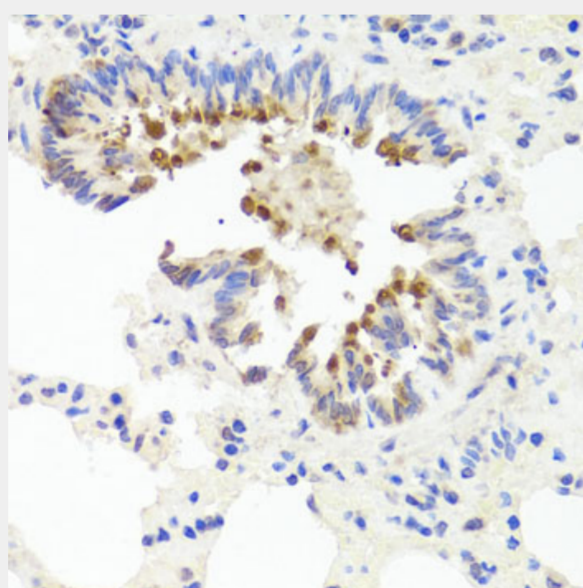
Q9C0C7



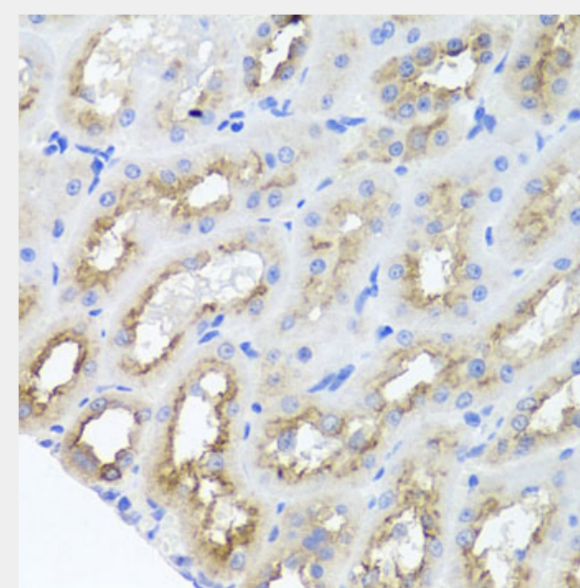
Western blot analysis of extracts of various cell lines, using FLJ20294 Antibody at 1:1000 dilution. Secondary antibody: HRP Goat Anti-Rabbit IgG (H+L) at 1:10000 dilution. Lysates/proteins: 25ug per lane. Blocking buffer: 3% nonfat dry milk in TBST. Detection: ECL Basic Kit. Exposure time: 60s.



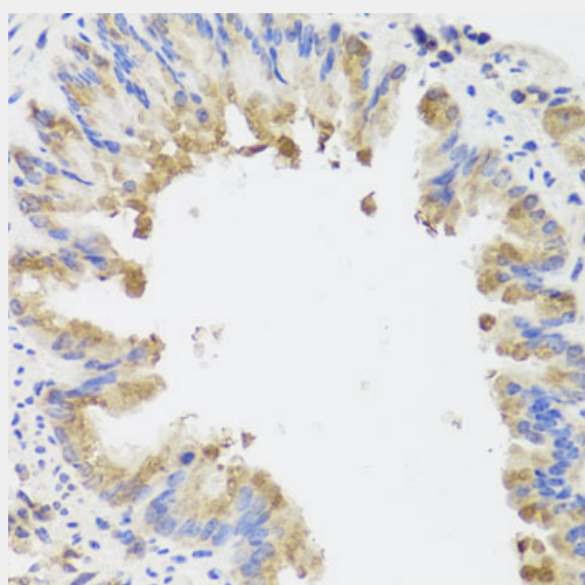
Immunohistochemistry of paraffin-embedded mouse stomach using AMBRA1 antibody at dilution of 1:100 (40x lens).



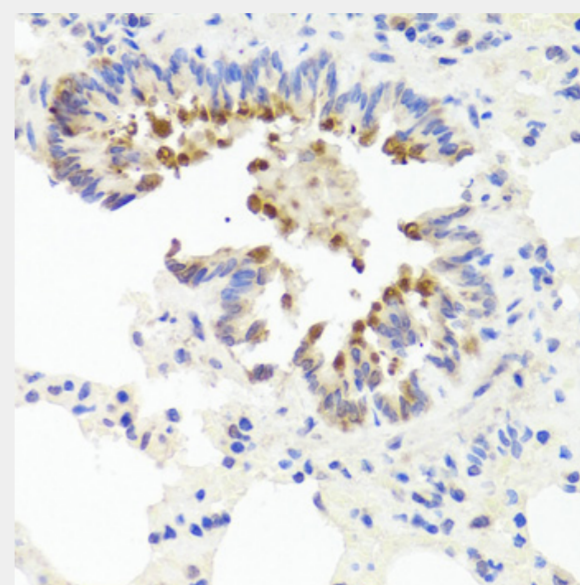
Immunohistochemistry of paraffin-embedded rat lung using AMBRA1 antibody at dilution of 1:100 (40x lens).



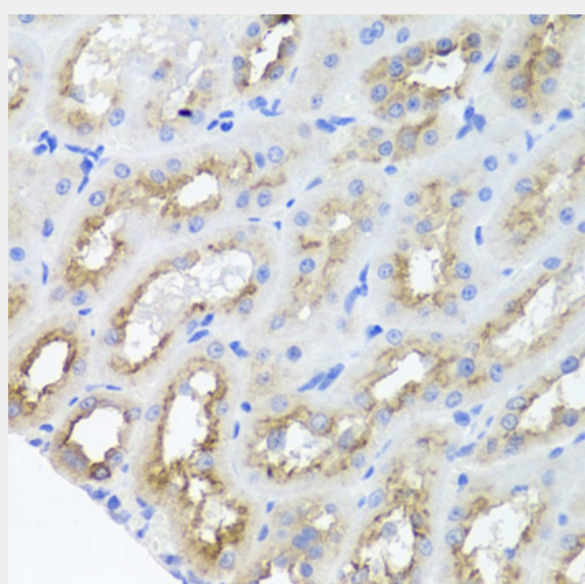
Immunohistochemistry of paraffin-embedded rat kidney using AMBRA1 antibody at dilution of 1:100 (40x lens).



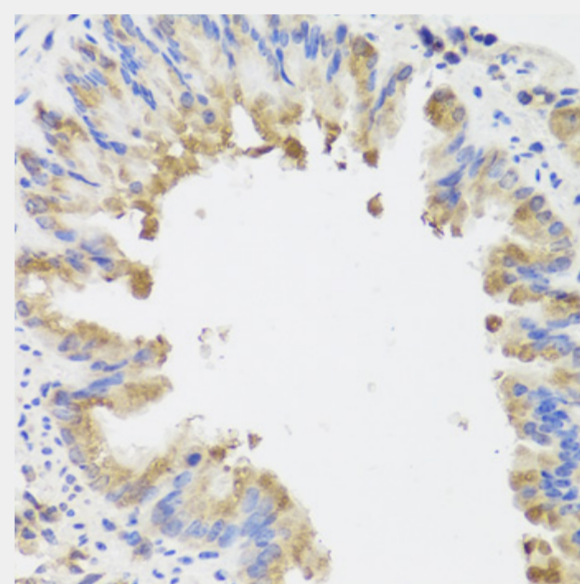
Immunohistochemistry of paraffin-embedded mouse lung using AMBRA1 antibody at dilution of 1:100 (40x lens).



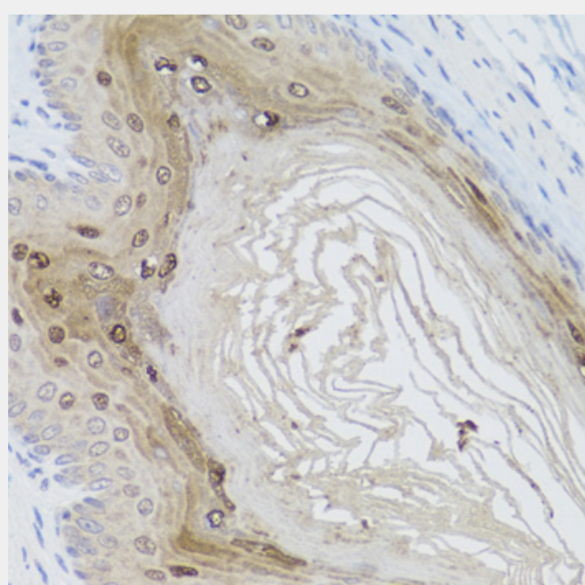
Immunohistochemistry of paraffin-embedded rat lung using AMBRA1 antibody at dilution of 1:100 (40x lens).



Immunohistochemistry of paraffin-embedded rat kidney using AMBRA1 antibody at dilution of 1:100 (40x lens).



Immunohistochemistry of paraffin-embedded mouse lung using AMBRA1 antibody at dilution of 1:100 (40x lens).



Immunohistochemistry of paraffin-embedded mouse stomach using AMBRA1 antibody at dilution of 1:100 (40x lens).

All products are for RESEARCH USE ONLY. Not for diagnostic & therapeutic purposes!