

Anti AHR Antibody

Catalog No: tcsa16076



Available Sizes

Size: 100µl



Specifications

Application:

WB, IHC

Species Reactivity:

Human, Mouse, Rat

Host Species:

Rabbit

Immunogen / Amino acids:

Recombinant protein of human AHR

Conjugation:

Unconjugated

Clonality:

Polyclonal

Isotype:

IgG

Form:

Liquid

Storage Buffer:

PBS with 0.02% sodium azide, 50% glycerol, pH7.3.

Recommended Dilution:

WB 1:200 - 1:2000

IHC 1:50 - 1:200

Storage Instruction:

Store at -20C. Avoid freeze / thaw cycles.

Alternative Names:

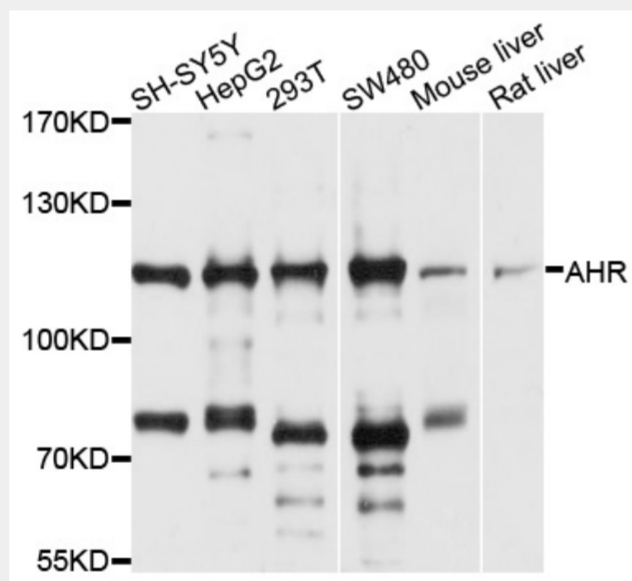
AHR antibody; Aryl hydrocarbon receptor antibody; Ah receptor antibody; AhR antibody; Class E basic helix-loop-helix protein 76 antibody; bHLHe76 antibody; AHR antibody; BHLHE76 antibody

SwissProt:

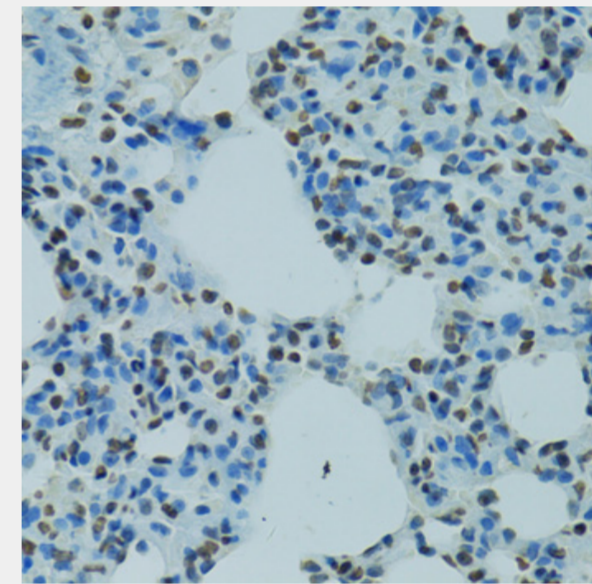
P35869

Product Description

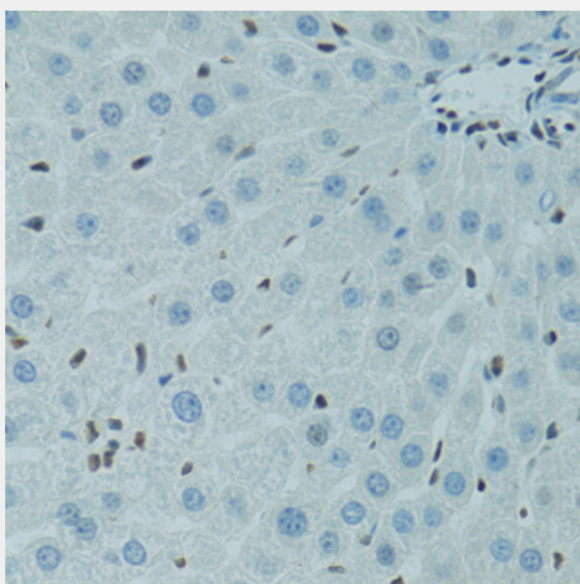
The protein encoded by this gene is a ligand-activated helix-loop-helix transcription factor involved in the regulation of biological responses to planar aromatic hydrocarbons. This receptor has been shown to regulate xenobiotic-metabolizing enzymes such as cytochrome P450. Before ligand binding, the encoded protein is sequestered in the cytoplasm; upon ligand binding, this protein moves to the nucleus and stimulates transcription of target genes.



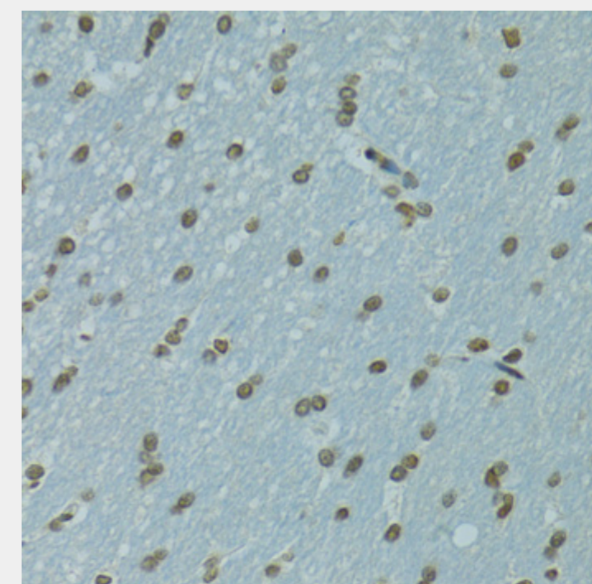
Western blot analysis of extracts of various cell lines, using AHR antibody at 1:1000 dilution. Secondary antibody: HRP Goat Anti-Rabbit IgG (H+L) at 1:10000 dilution. Lysates/proteins: 25ug per lane. Blocking buffer: 3% nonfat dry milk in TBST. Detection: ECL Basic Kit. Exposure time: 5s.



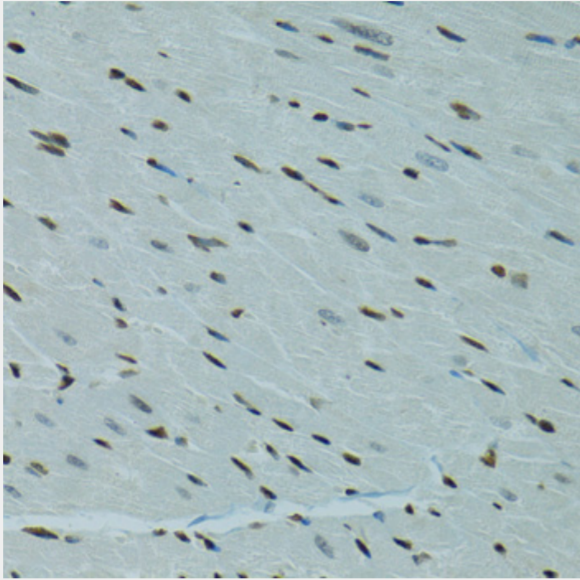
Immunohistochemistry of paraffin-embedded rat lung using AHR antibody at dilution of 1:100 (40x lens).



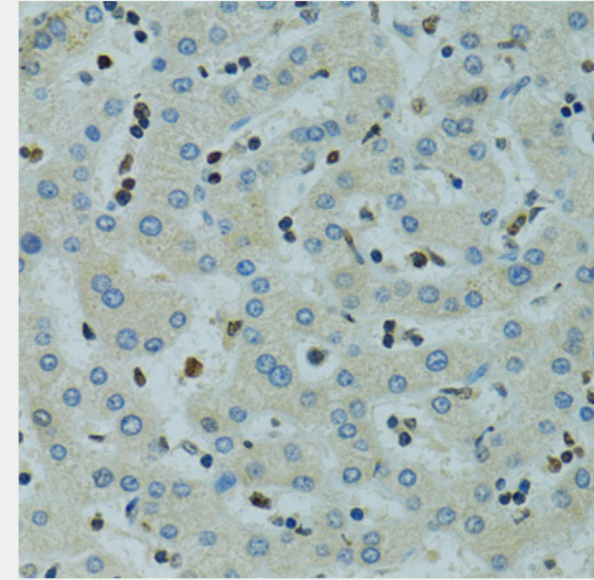
Immunohistochemistry of paraffin-embedded rat liver using AHR antibody at dilution of 1:100 (40x lens).



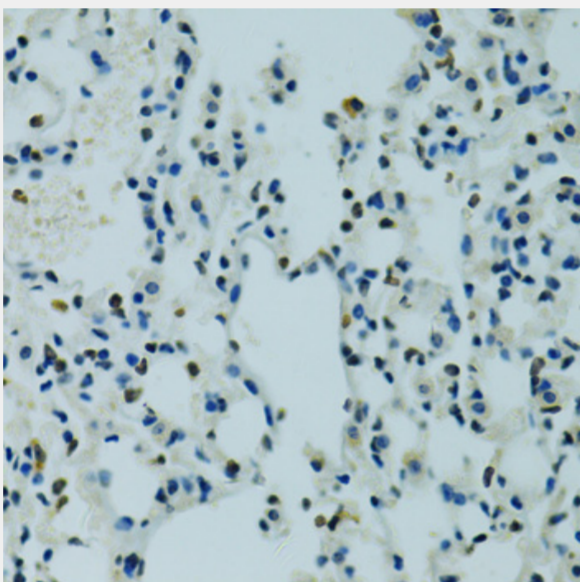
Immunohistochemistry of paraffin-embedded rat brain using AHR antibody at dilution of 1:100 (40x lens).



Immunohistochemistry of paraffin-embedded rat heart using AHR antibody at dilution of 1:100 (40x lens).



Immunohistochemistry of paraffin-embedded human liver using AHR antibody at dilution of 1:100 (40x lens).



Immunohistochemistry of paraffin-embedded mouse lung using AHR antibody at dilution of 1:100 (40x lens).

All products are for RESEARCH USE ONLY. Not for diagnostic & therapeutic purposes!