

Anti Phospho MAPT S262 Antibody

Catalog No: tcsa15848



Available Sizes

Size: 100μl



Specifications

Application:

WB, IHC, IF

Species Reactivity:

Human, Mouse, Rat

Host Species:

Rabbit

Immunogen / Amino acids:

A phospho specific peptide corresponding to residues surrounding S262 of human MAPT

Conjugation:

Unconjugated

Clonality:

Polyclonal

Isotype:

IgG

Form:

Liquid

Storage Buffer:

PBS with 0.02% sodium azide, 50% glycerol, pH7.3.

Recommended Dilution:

WB 1:500 - 1:2000

IHC 1:50 - 1:100

IF 1:100 - 1:200

Storage Instruction:

Store at -20C. Avoid freeze / thaw cycles.

Alternative Names:

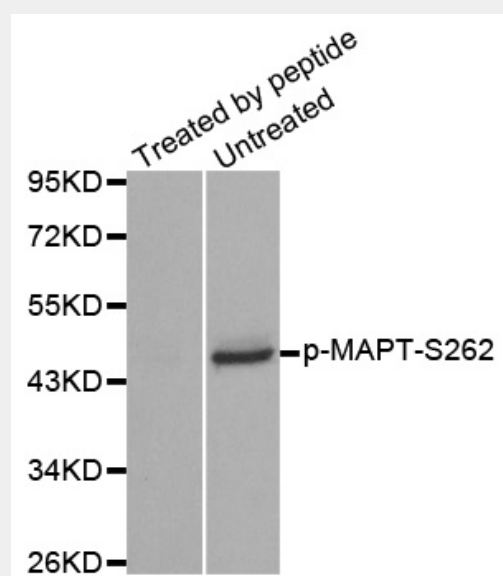
MAPT antibody; Microtubule-associated protein tau antibody; Neurofibrillary tangle protein antibody; Paired helical filament-tau antibody; PHF-tau antibody; MAPT antibody; MAPTL antibody; MTBT1 antibody; TAU antibody

SwissProt:

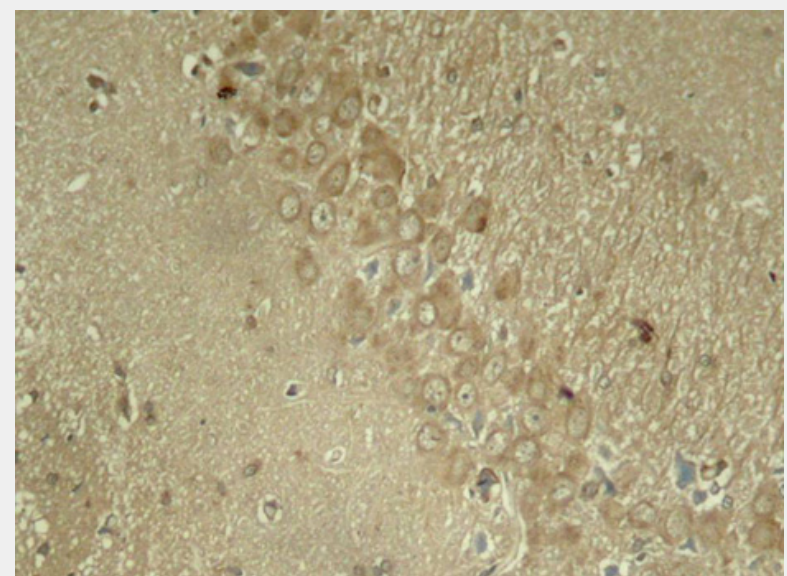
P10636

Product Description

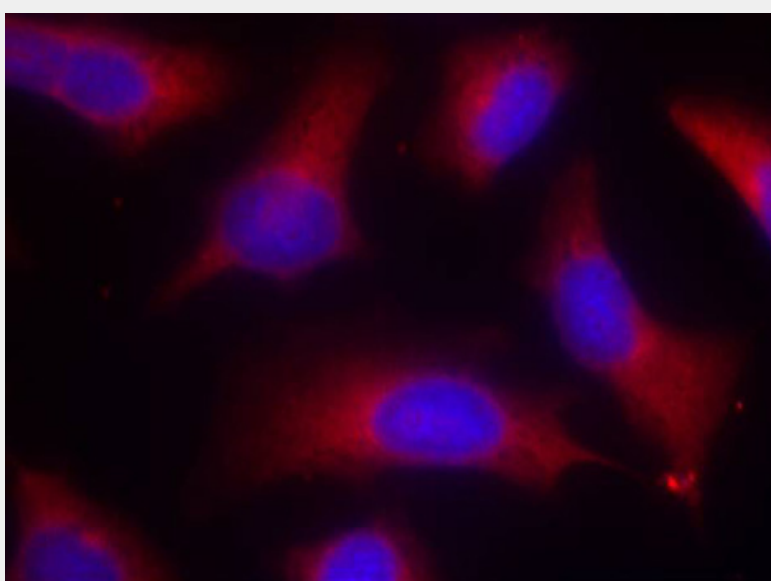
This gene encodes the microtubule-associated protein tau (MAPT) whose transcript undergoes complex, regulated alternative splicing, giving rise to several mRNA species. MAPT transcripts are differentially expressed in the nervous system, depending on stage of neuronal maturation and neuron type. MAPT gene mutations have been associated with several neurodegenerative disorders such as Alzheimer's disease, Pick's disease, frontotemporal dementia, cortico-basal degeneration and progressive supranuclear palsy.



Western blot analysis of extracts from mouse brain tissue using Phospho-MAPT-S262 antibody. Secondary antibody: HRP Goat Anti-Rabbit IgG (H+L) at 1:10000 dilution. Lysates/proteins: 25ug per lane. Blocking buffer: 3% BSA.



Immunohistochemistry of paraffin-embedded rat hippocampal region tissue from a model with Alzheimer using Phospho-MAPT-S262 antibody.



Immunofluorescence staining of methanol-fixed HeLa cells using Phospho-MAPT-S262 antibody.

All products are for RESEARCH USE ONLY. Not for diagnostic & therapeutic purposes!