

Anti Phospho Mapt S416 Antibody

Catalog No: tcsa15847



Available Sizes

Size: 100μl



Specifications

Application:

WB

Species Reactivity:

Mouse,Rat

Host Species:

Rabbit

Immunogen / Amino acids:

A phospho specific peptide corresponding to residues surrounding S416 of Rat Mapt

Conjugation:

Unconjugated

Clonality:

Polyclonal

Isotype:

IgG

Form:

Liquid

Storage Buffer:

PBS with 0.02% sodium azide, 50% glycerol, pH7.3.

Recommended Dilution:

WB 1:500 - 1:1000

Storage Instruction:

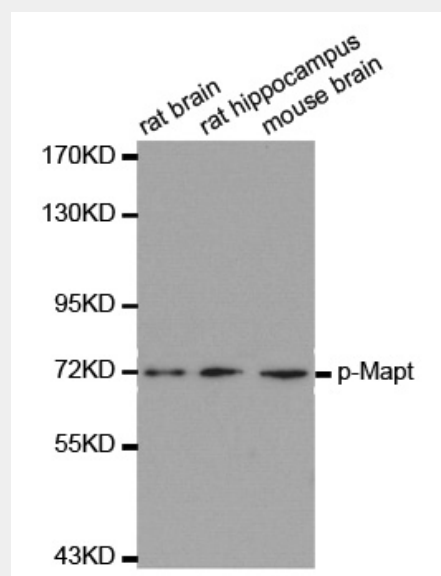
Store at -20C. Avoid freeze / thaw cycles.

Alternative Names:

anti-Phospho-Mapt-S416 antibody

Product Description

This gene encodes the microtubule-associated protein tau (MAPT) whose transcript undergoes complex, regulated alternative splicing, giving rise to several mRNA species. MAPT transcripts are differentially expressed in the nervous system, depending on stage of neuronal maturation and neuron type. MAPT gene mutations have been associated with several neurodegenerative disorders such as Alzheimer's disease, Pick's disease, frontotemporal dementia, cortico-basal degeneration and progressive supranuclear palsy.



Western blot analysis of extract from rat brain, rat hippocampus and mouse brain using Phospho-Mapt-S416 Antibody. Secondary antibody: HRP Goat Anti-Rabbit IgG (H+L) at 1:10000 dilution. Lysates/proteins: 25ug per lane. Blocking buffer: 3% BSA.

All products are for RESEARCH USE ONLY. Not for diagnostic & therapeutic purposes!