

# Anti Phospho MAPT S396 Antibody

Catalog No: tcsa15842



## Available Sizes

**Size:** 100μl



## Specifications

**Application:**

WB, IHC

**Species Reactivity:**

Human, Mouse, Rat

**Host Species:**

Rabbit

**Immunogen / Amino acids:**

A phospho specific peptide corresponding to residues surrounding S396 of human MAPT

**Conjugation:**

Unconjugated

**Clonality:**

Polyclonal

**Isotype:**

IgG

**Form:**

Liquid

**Storage Buffer:**

PBS with 0.02% sodium azide, 50% glycerol, pH7.3.

**Recommended Dilution:**

WB 1:500 - 1:2000

IHC 1:50 - 1:100

### Storage Instruction:

Store at -20C. Avoid freeze / thaw cycles.

### Alternative Names:

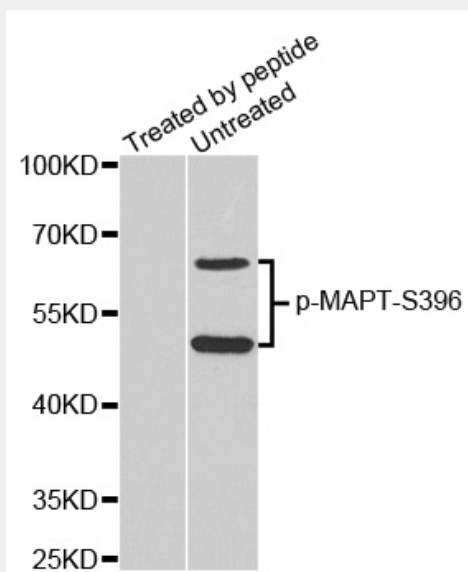
MAPT antibody; Microtubule-associated protein tau antibody; Neurofibrillary tangle protein antibody; Paired helical filament-tau antibody; PHF-tau antibody; MAPT antibody; MAPTL antibody; MTBT1 antibody; TAU antibody

### SwissProt:

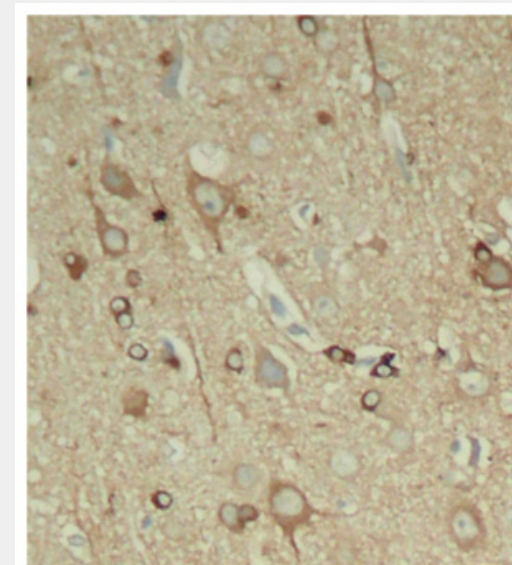
P10636

## Product Description

This gene encodes the microtubule-associated protein tau (MAPT) whose transcript undergoes complex, regulated alternative splicing, giving rise to several mRNA species. MAPT transcripts are differentially expressed in the nervous system, depending on stage of neuronal maturation and neuron type. MAPT gene mutations have been associated with several neurodegenerative disorders such as Alzheimer's disease, Pick's disease, frontotemporal dementia, cortico-basal degeneration and progressive supranuclear palsy.



Western blot analysis of extracts from mouse brain tissue, using phospho-MAPT-S396 antibody. Secondary antibody: HRP Goat Anti-Rabbit IgG (H+L) at 1:10000 dilution. Lysates/proteins: 25ug per lane. Blocking buffer: 3% BSA.



Immunohistochemistry of paraffin-embedded rat hippocampal region tissue from a model with Alzheimer, using Phospho-MAPT-S396 antibody.

All products are for RESEARCH USE ONLY. Not for diagnostic & therapeutic purposes!