

Anti Phospho RB1 S807 Antibody

Catalog No: tcsa15592



Available Sizes

Size: 100µl



Specifications

Application:

WB, IHC, IF

Species Reactivity:

Human, Mouse, Rat

Host Species:

Rabbit

Immunogen / Amino acids:

A phospho specific peptide corresponding to residues surrounding S807 of human RB1

Conjugation:

Unconjugated

Clonality:

Monoclonal

Isotype:

IgG

Form:

Liquid

Storage Buffer:

PBS with 0.02% sodium azide, 50% glycerol, pH7.3.

Recommended Dilution:

WB 1:500 - 1:2000

IHC 1:50 - 1:200

IF 1:50 - 1:200

Storage Instruction:

Store at -20C. Avoid freeze / thaw cycles.

Alternative Names:

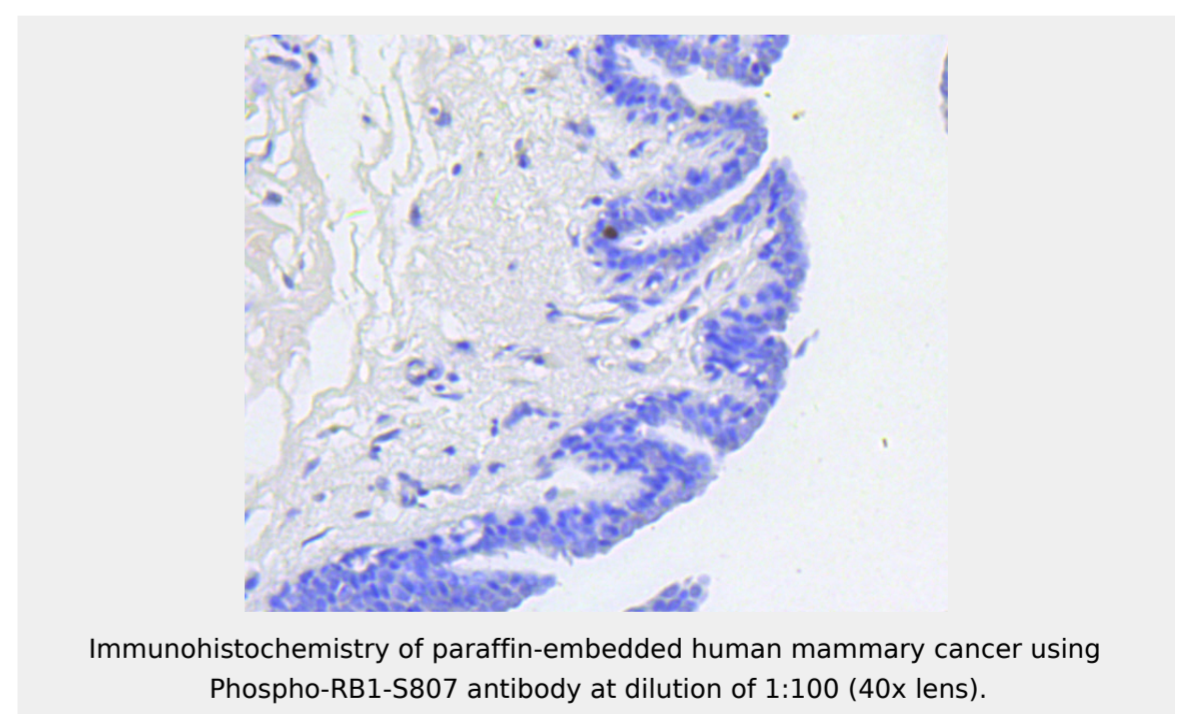
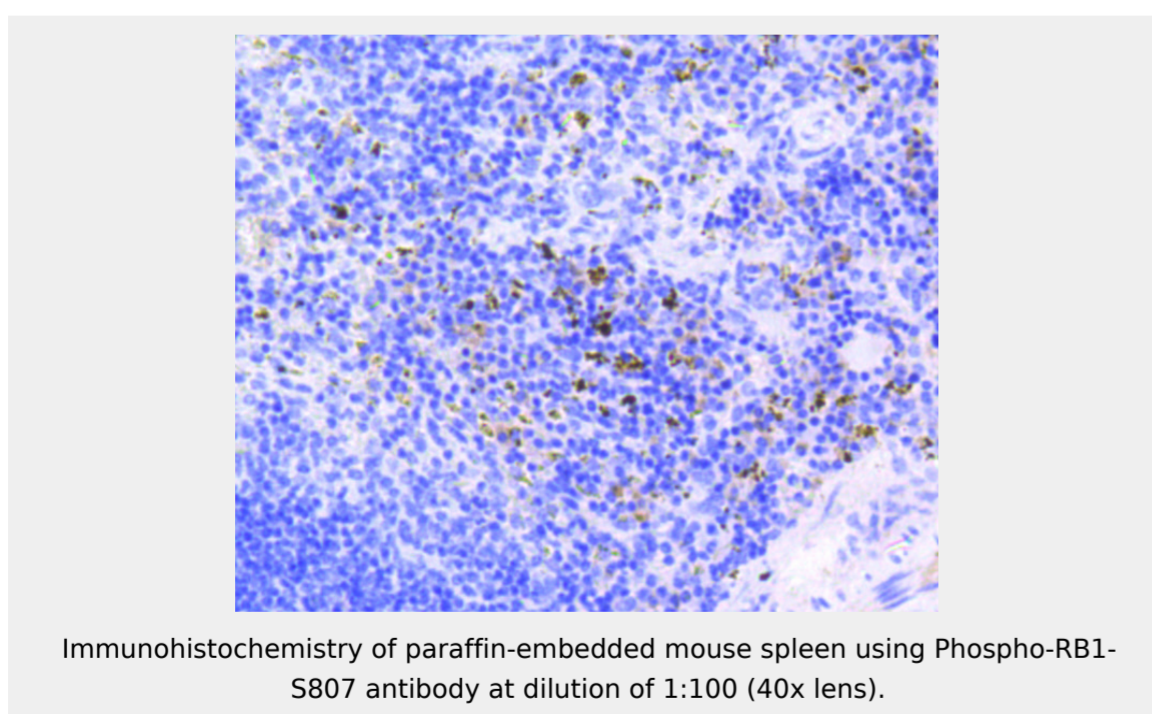
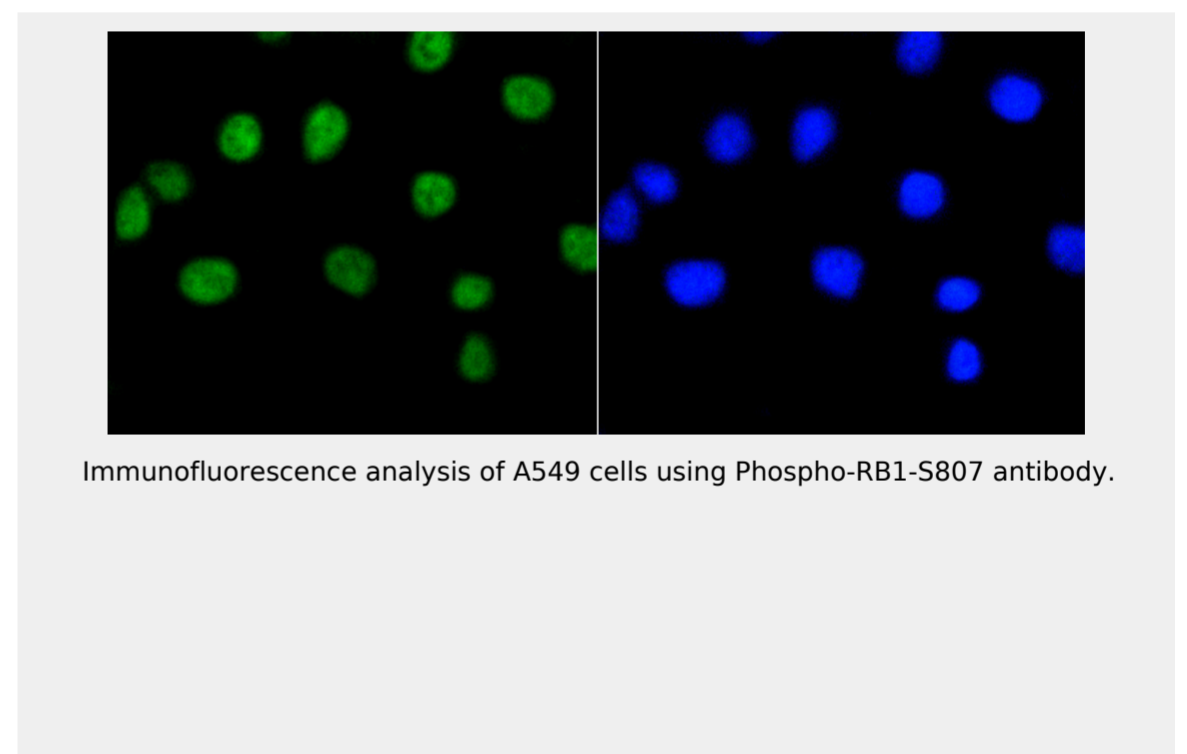
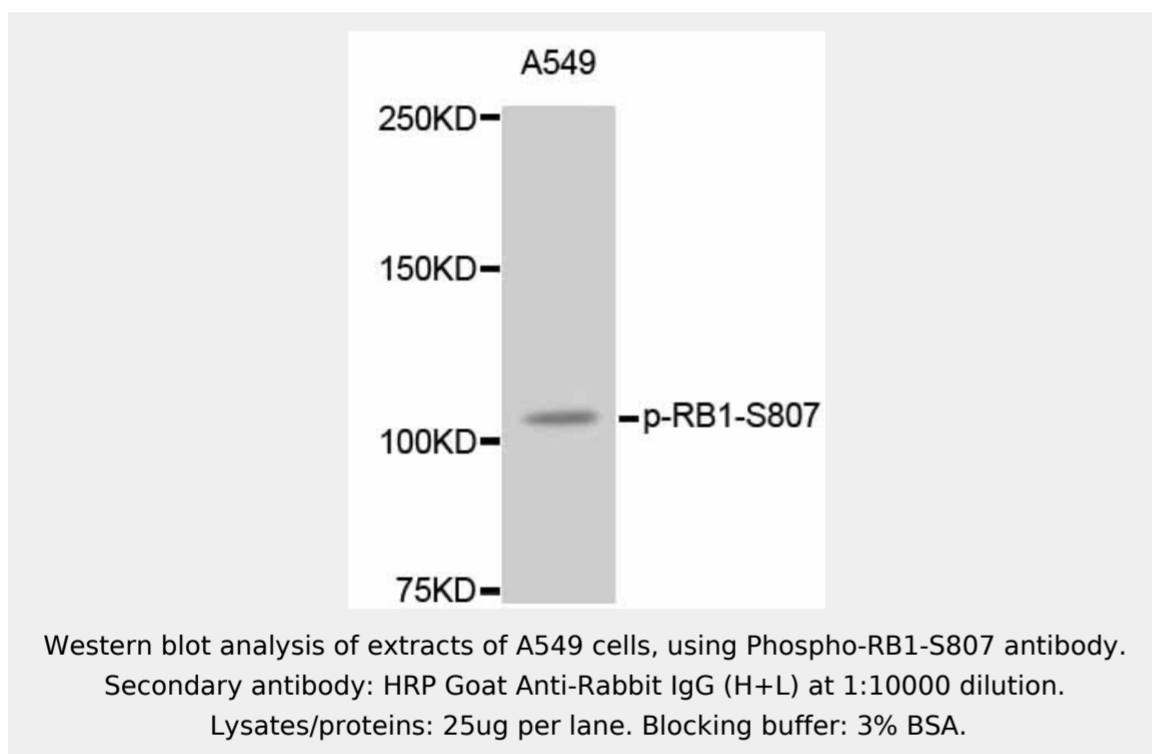
RB1 antibody; Retinoblastoma-associated protein antibody; p105-Rb antibody; pRb antibody; Rb antibody; pp110 antibody; RB1 antibody

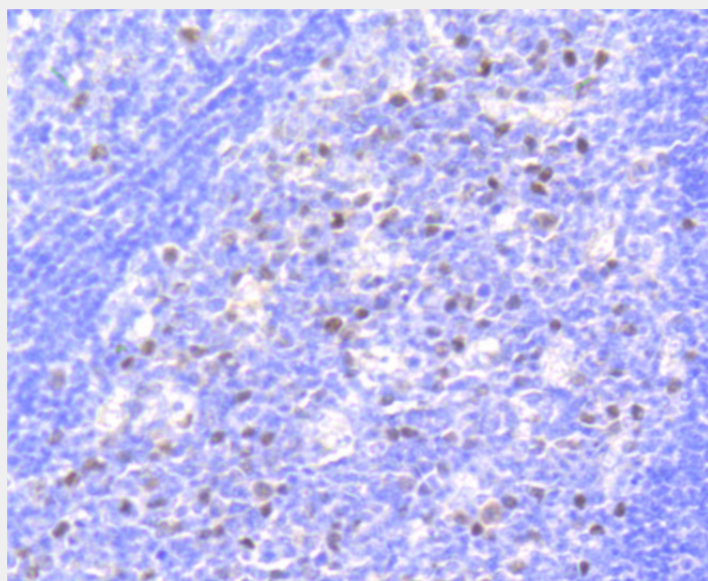
SwissProt:

P06400

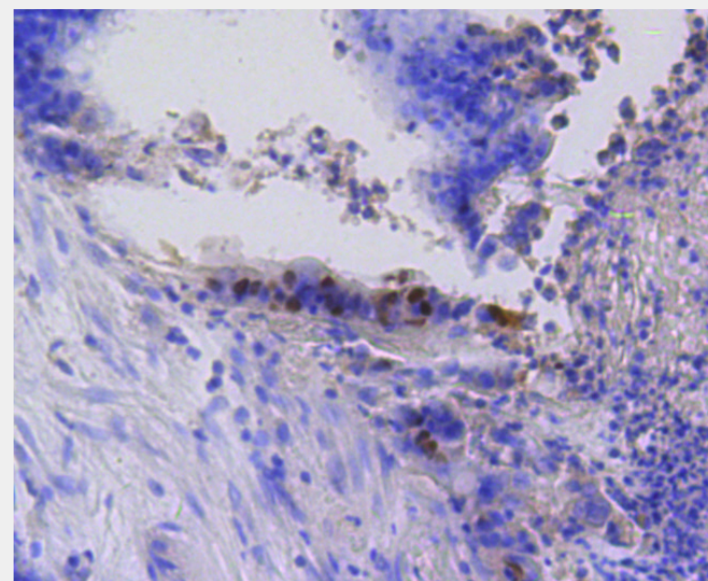
Product Description

The protein encoded by this gene is a negative regulator of the cell cycle and was the first tumor suppressor gene found. The encoded protein also stabilizes constitutive heterochromatin to maintain the overall chromatin structure. The active, hypophosphorylated form of the protein binds transcription factor E2F1. Defects in this gene are a cause of childhood cancer retinoblastoma (RB), bladder cancer, and osteogenic sarcoma.

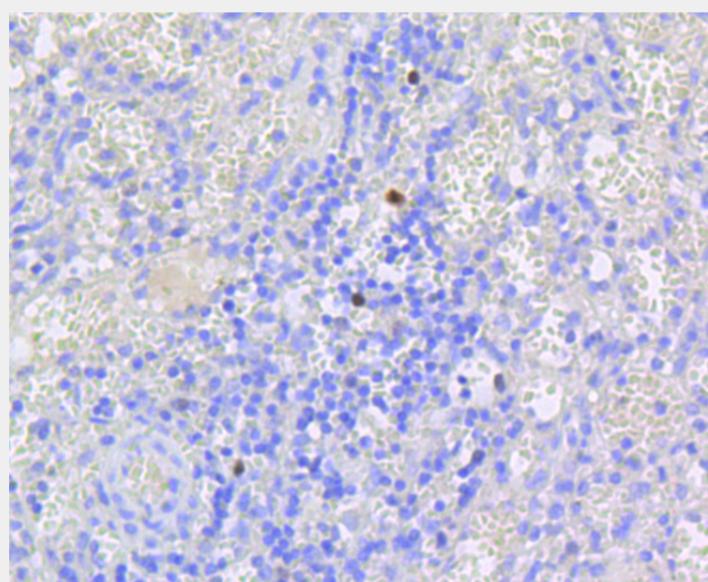




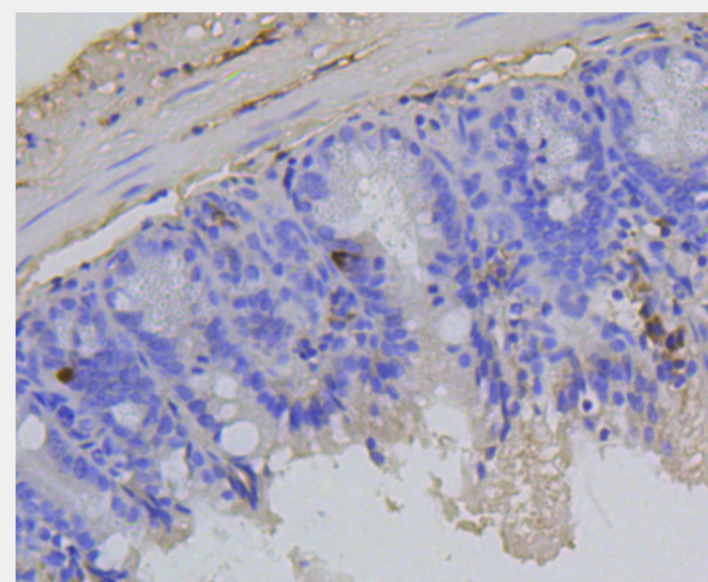
Immunohistochemistry of paraffin-embedded human tonsil using Phospho-RB1-S807 antibody at dilution of 1:100 (40x lens).



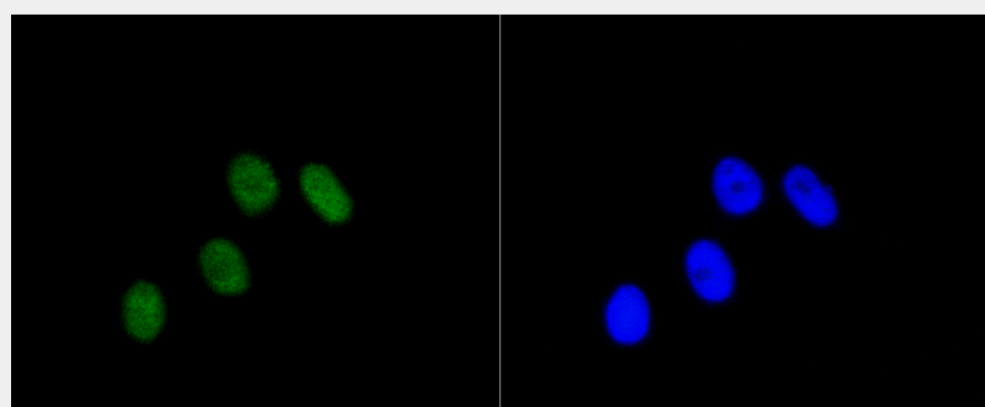
Immunohistochemistry of paraffin-embedded human colon carcinoma using Phospho-RB1-S807 antibody at dilution of 1:100 (40x lens).



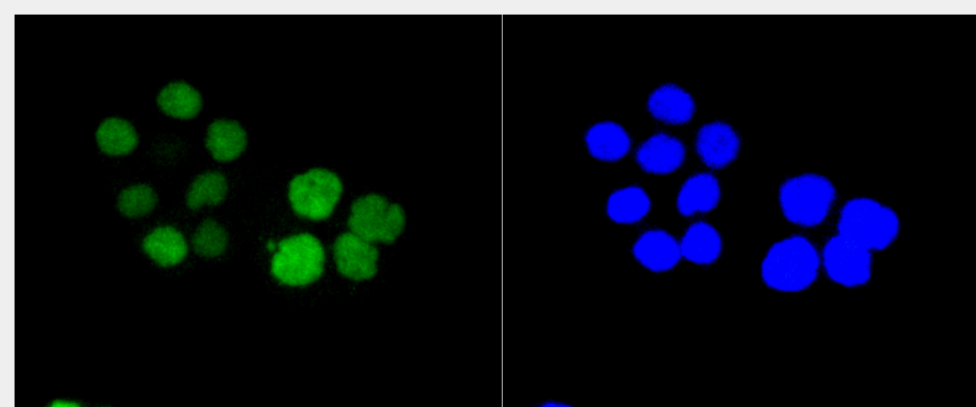
Immunohistochemistry of paraffin-embedded human spleen using Phospho-RB1-S807 antibody at dilution of 1:100 (40x lens).



Immunohistochemistry of paraffin-embedded mouse colon using Phospho-RB1-S807 antibody at dilution of 1:100 (40x lens).



Immunofluorescence analysis of MCF-7 cells using Phospho-RB1-S807 antibody.



Immunofluorescence analysis of CRC cells using Phospho-RB1-S807 antibody.

All products are for RESEARCH USE ONLY. Not for diagnostic & therapeutic purposes!