

# Anti Phospho eIF2a S51 Antibody

Catalog No: tcsa15585



## Available Sizes

---

**Size:** 100µl



## Specifications

---

**Application:**

WB, IHC, IF

**Species Reactivity:**

Human, Mouse, Rat

**Host Species:**

Rabbit

**Immunogen / Amino acids:**

A phospho specific peptide corresponding to residues surrounding S51 of human eIF2a

**Conjugation:**

Unconjugated

**Clonality:**

Monoclonal

**Isotype:**

IgG

**Form:**

Liquid

**Storage Buffer:**

PBS with 0.02% sodium azide, 50% glycerol, pH7.3.

**Recommended Dilution:**

WB 1:500 - 1:2000

IHC 1:50 - 1:200

IF 1:50 - 1:200

**Storage Instruction:**

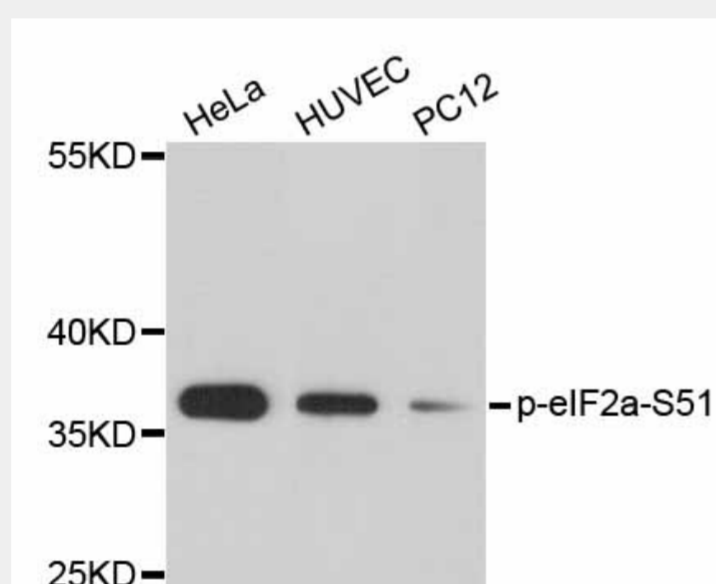
Store at -20C. Avoid freeze / thaw cycles.

**Alternative Names:**

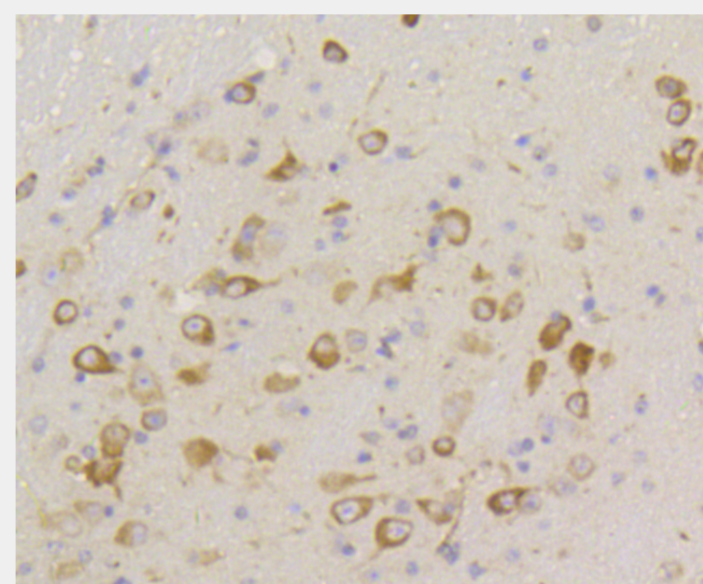
EIF2S1 antibody; Eukaryotic translation initiation factor 2 subunit 1 antibody; Eukaryotic translation initiation factor 2 subunit alpha antibody; eIF-2-alpha antibody; eIF-2A antibody; eIF-2alpha antibody; EIF2S1 antibody; EIF2A anti

**SwissProt:**

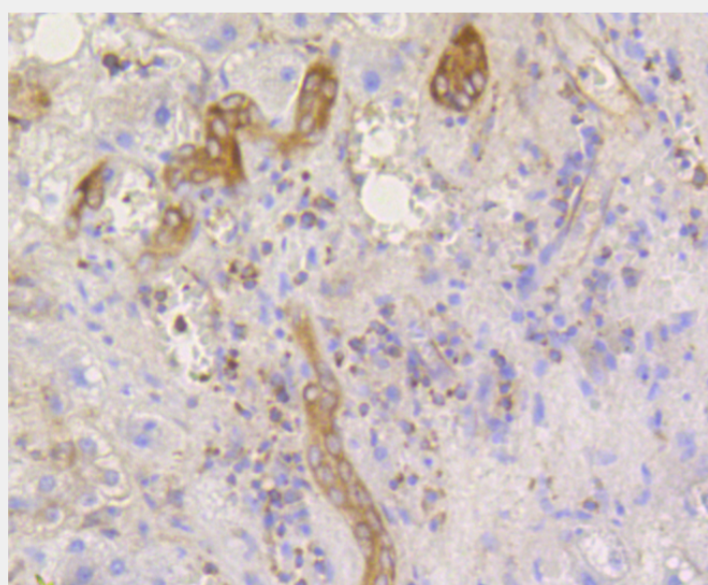
P05198



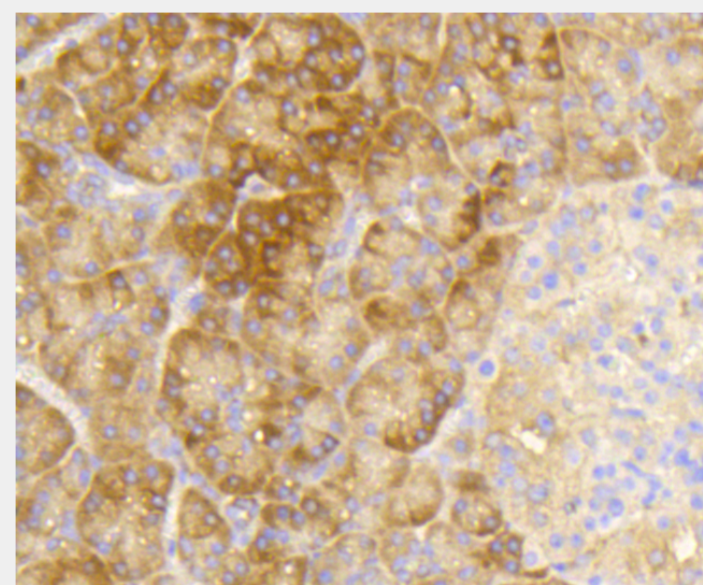
Western blot analysis of extracts of various cells, using Phospho-EIF2S1-S51 antibody. Secondary antibody: HRP Goat Anti-Rabbit IgG (H+L) at 1:10000 dilution. Lysates/proteins: 25ug per lane. Blocking buffer: 3% BSA.



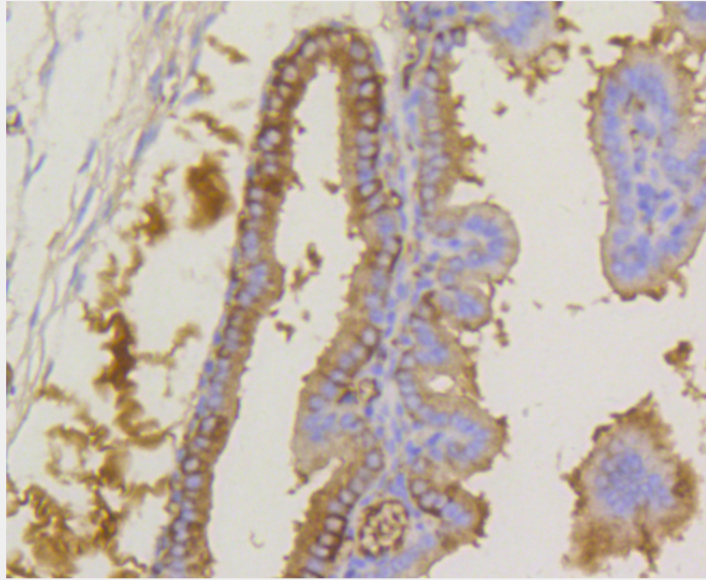
Immunohistochemistry of paraffin-embedded mouse brain using Phospho-eIF2α-S51 antibody at dilution of 1:100 (40x lens).



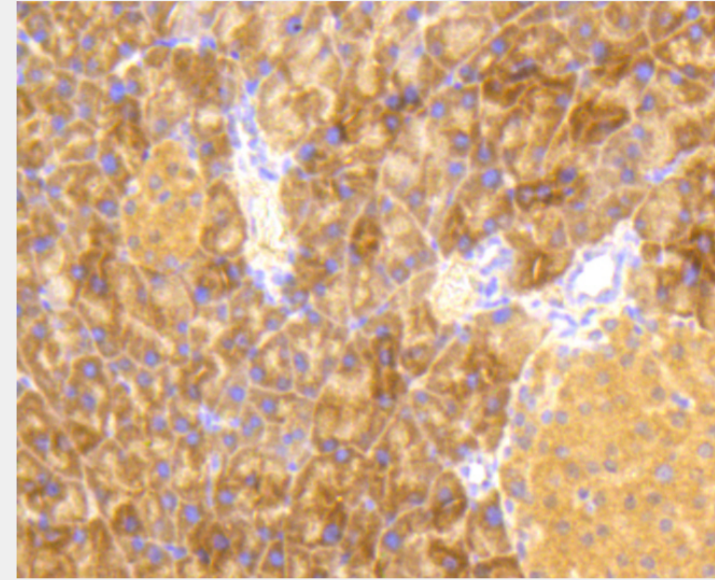
Immunohistochemistry of paraffin-embedded human liver using Phospho-eIF2α-S51 antibody at dilution of 1:100 (40x lens).



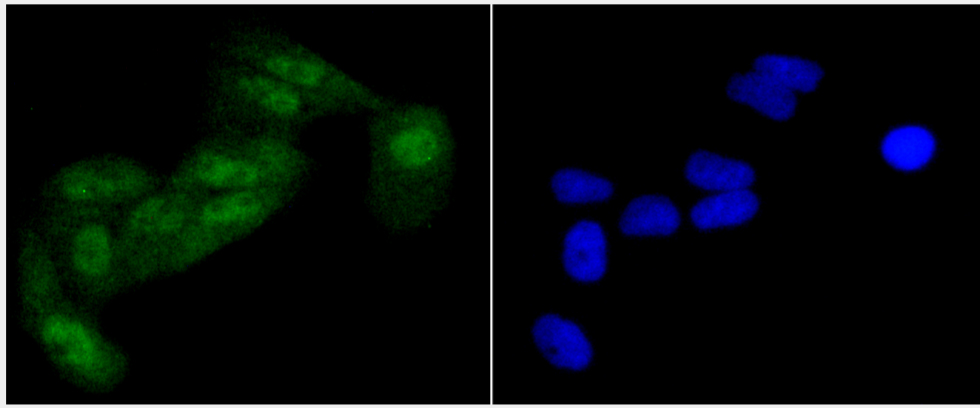
Immunohistochemistry of paraffin-embedded human pancreas using Phospho-eIF2α-S51 antibody at dilution of 1:100 (40x lens).



Immunohistochemistry of paraffin-embedded mouse placenta using Phospho-eIF2 $\alpha$ -S51 antibody at dilution of 1:100 (40x lens).



Immunohistochemistry of paraffin-embedded mouse pancreas using Phospho-eIF2 $\alpha$ -S51 antibody at dilution of 1:100 (40x lens).



Immunofluorescence analysis of HeLa cells using Phospho-eIF2 $\alpha$ -S51 antibody.

All products are for RESEARCH USE ONLY. Not for diagnostic & therapeutic purposes!