

Anti Phospho NFE2L2 S40 Antibody

Catalog No: tcsa15584



Available Sizes

Size: 100µl



Specifications

Application:

WB, IHC, IF, IP

Species Reactivity:

Human

Host Species:

Rabbit

Immunogen / Amino acids:

A phospho specific peptide corresponding to residues surrounding S40 of human NFE2L2

Conjugation:

Unconjugated

Clonality:

Monoclonal

Isotype:

IgG

Form:

Liquid

Storage Buffer:

PBS with 0.02% sodium azide, 50% glycerol, pH7.3.

Recommended Dilution:

WB 1:500 - 1:2000

IHC 1:50 - 1:200

IF 1:50 - 1:200

IP 1:20 - 1:50

Storage Instruction:

Store at -20C. Avoid freeze / thaw cycles.

Alternative Names:

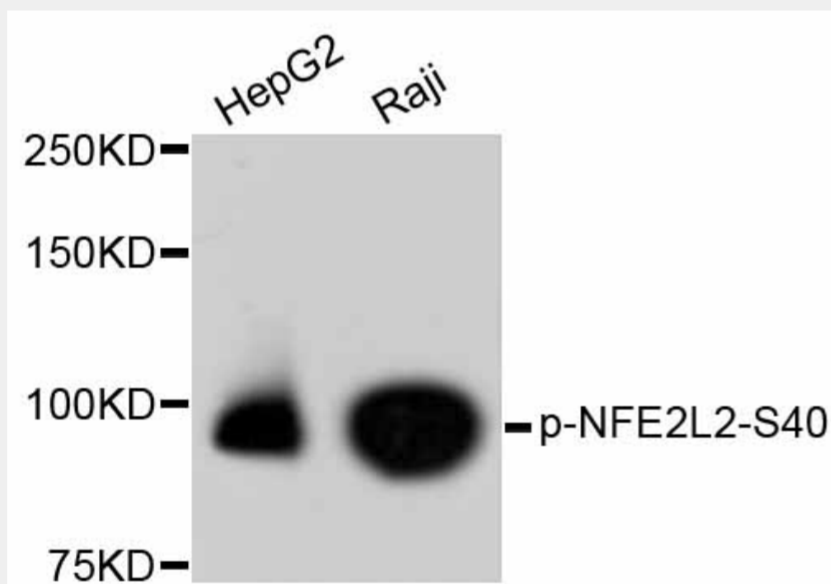
NFE2L2 antibody; Nuclear factor erythroid 2-related factor 2 antibody; NF-E2-related factor 2 antibody; NFE2-related factor 2 antibody; HEBP1 antibody; Nuclear factor antibody; erythroid derived 2 antibody; like 2 antibody; NFE2L2

SwissProt:

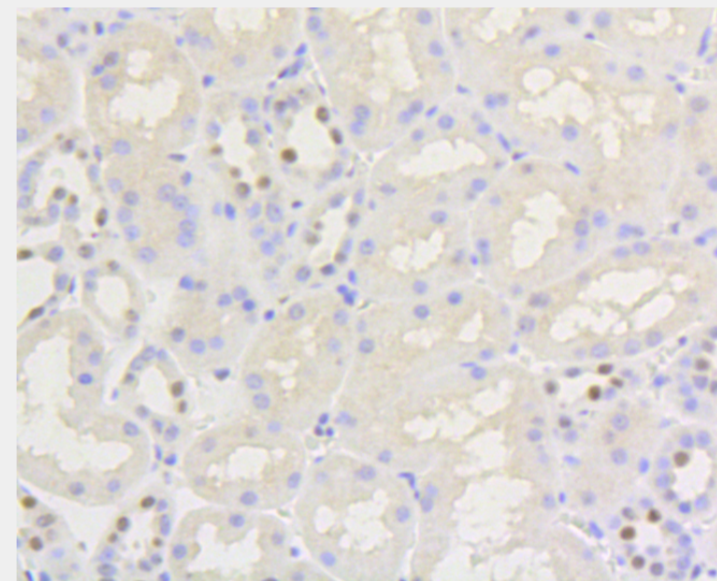
Q16236

Product Description

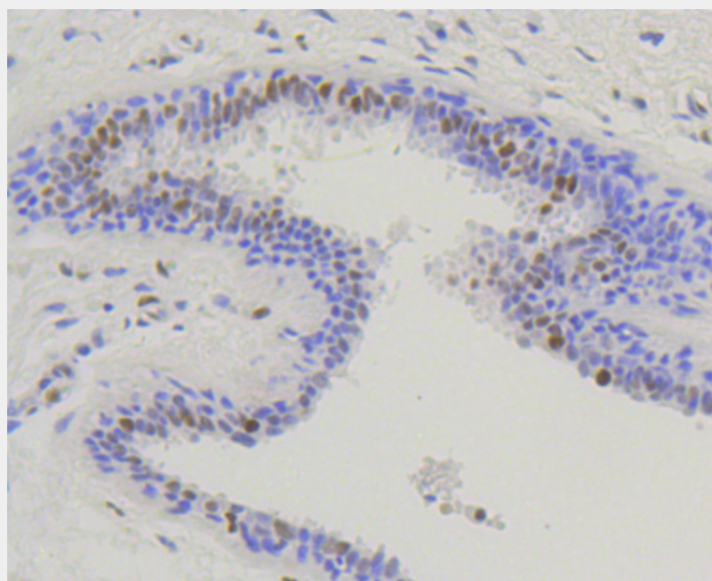
This gene encodes a transcription factor which is a member of a small family of basic leucine zipper (bZIP) proteins. The encoded transcription factor regulates genes which contain antioxidant response elements (ARE) in their promoters; many of these genes encode proteins involved in response to injury and inflammation which includes the production of free radicals. Multiple transcript variants encoding different isoforms have been characterized for this gene.



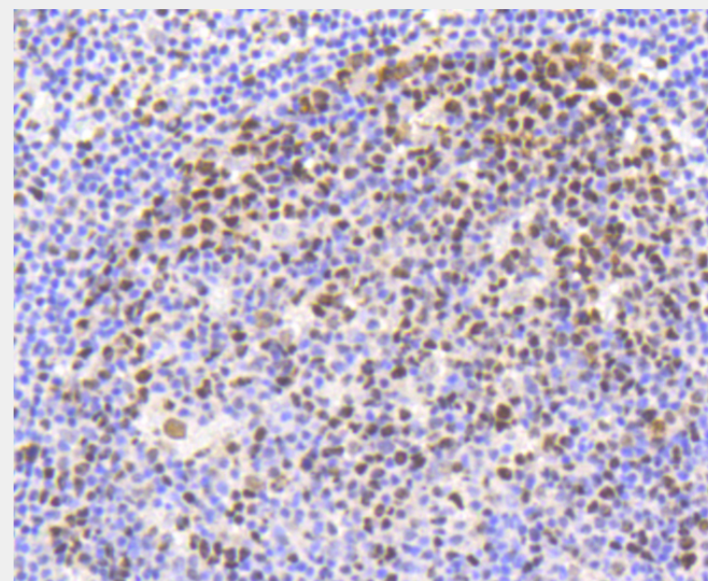
Western blot analysis of extracts of various cells, using Phospho-NFE2L2-S40 antibody. Secondary antibody: HRP Goat Anti-Rabbit IgG (H+L) at 1:10000 dilution. Lysates/proteins: 25ug per lane. Blocking buffer: 3% BSA.



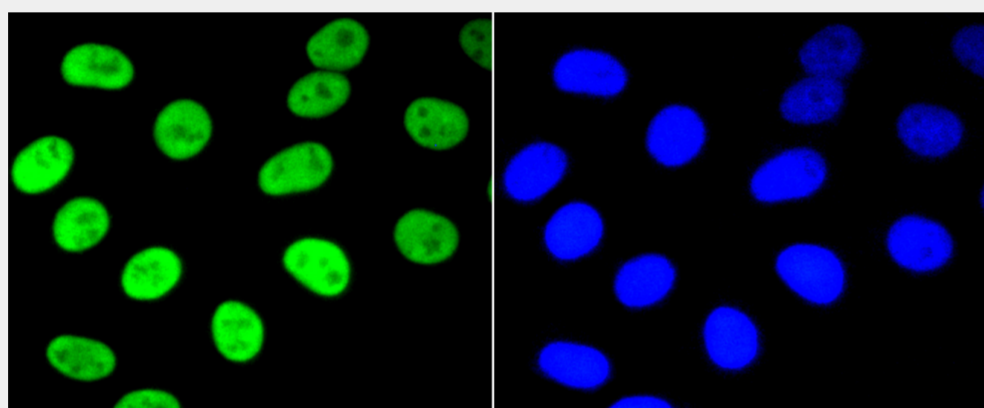
Immunohistochemistry of paraffin-embedded human kidney using Phospho-NFE2L2-S40 antibody at dilution of 1:100 (40x lens).



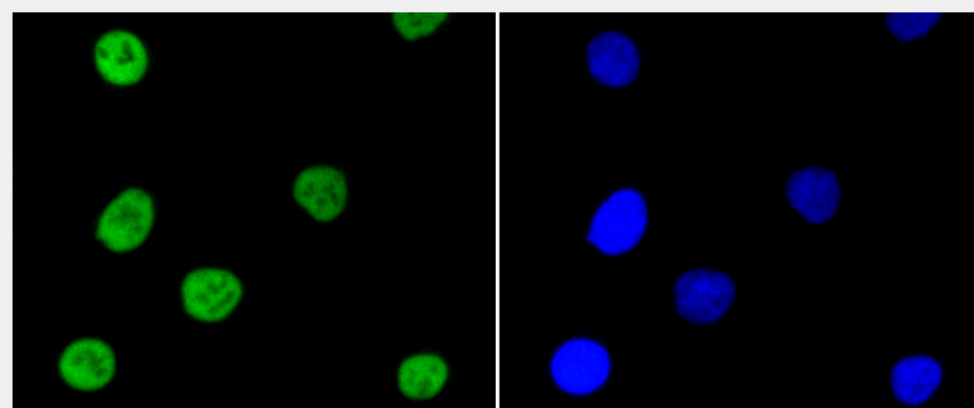
Immunohistochemistry of paraffin-embedded human mammary cancer using Phospho-NFE2L2-S40 antibody at dilution of 1:100 (40x lens).



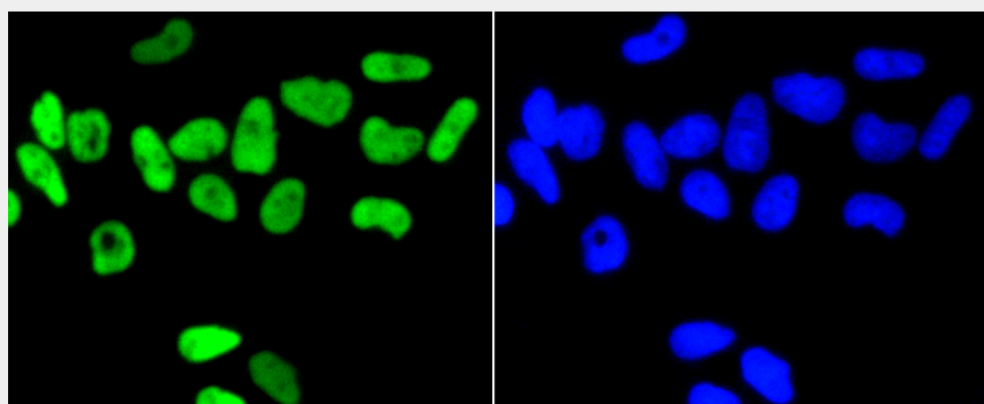
Immunohistochemistry of paraffin-embedded human tonsil using Phospho-NFE2L2-S40 antibody at dilution of 1:100 (40x lens).



Immunofluorescence analysis of HepG2 cells using Phospho-NFE2L2-S40 antibody.



Immunofluorescence analysis of A549 cells using Phospho-NFE2L2-S40 antibody.



Immunofluorescence analysis of HeLa cells using Phospho-NFE2L2-S40 antibody.

All products are for RESEARCH USE ONLY. Not for diagnostic & therapeutic purposes!