

Anti Phospho JNK1 / 2 / 3 T183 / T183 / T221 Antibody

Catalog No: tcsa15582



Available Sizes

Size: 100µl



Specifications

Application:

WB, IHC, IF, IP

Species Reactivity:

Human, Mouse, Rat

Host Species:

Rabbit

Immunogen / Amino acids:

A phospho specific peptide corresponding to residues surrounding T183/T183/T221 of human JNK1/2/3

Conjugation:

Unconjugated

Clonality:

Monoclonal

Isotype:

IgG

Form:

Liquid

Storage Buffer:

PBS with 0.02% sodium azide, 50% glycerol, pH7.3.

Recommended Dilution:

WB 1:500 - 1:2000

IHC 1:50 - 1:200

IF 1:50 - 1:200

IP 1:20 - 1:50

Storage Instruction:

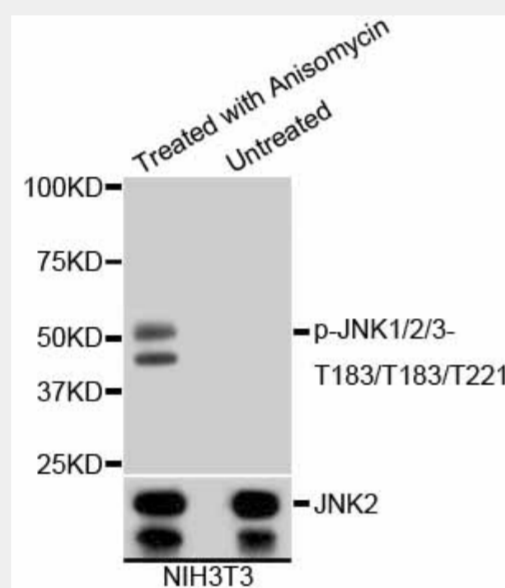
Store at -20C. Avoid freeze / thaw cycles.

Alternative Names:

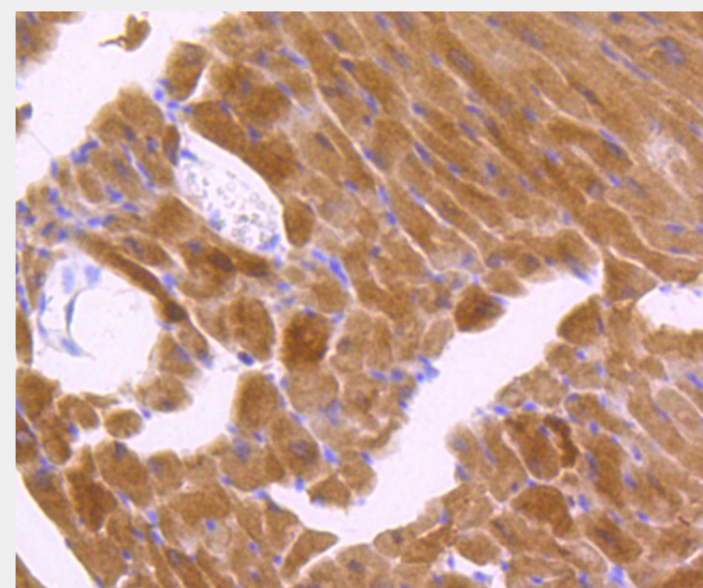
anti-Phospho-JNK1/2/3-T183/T183/T221 antibody

SwissProt:

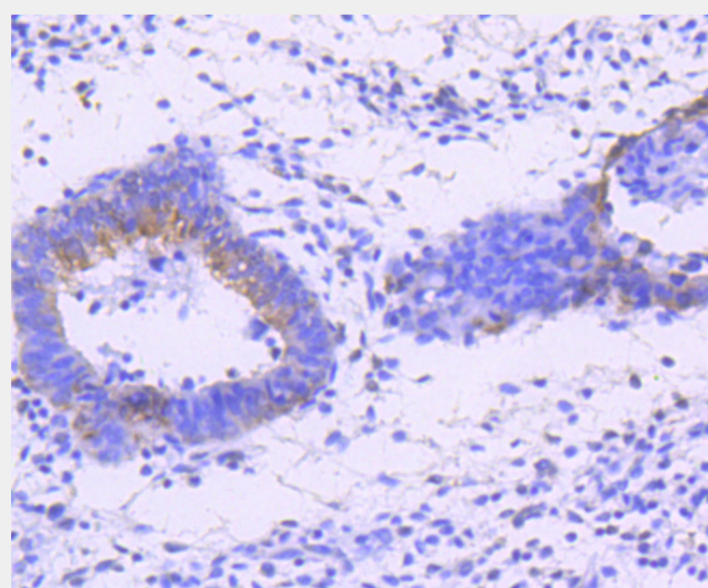
P45983/P45984/P53779



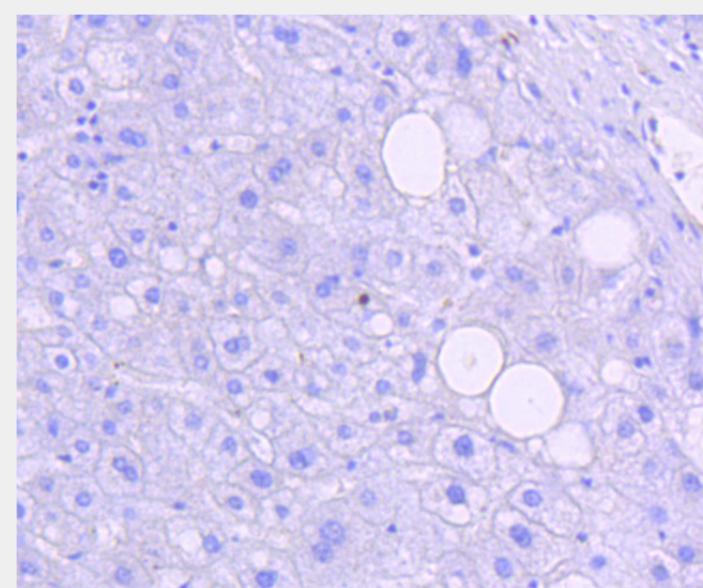
Western blot analysis of extracts of various cells, using Phospho-JNK1/2/3-T183/T183/T221 antibody. Secondary antibody: HRP Goat Anti-Rabbit IgG (H+L) at 1:10000 dilution. Lysates/proteins: 25ug per lane. Blocking buffer: 3% BSA.



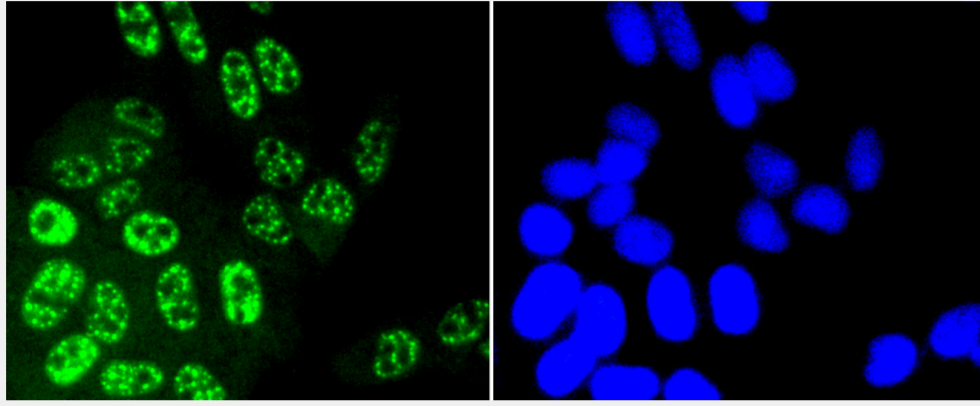
Immunohistochemistry of paraffin-embedded mouse heart using Phospho-JNK1/2/3-T183/T183/T221 antibody at dilution of 1:100 (40x lens).



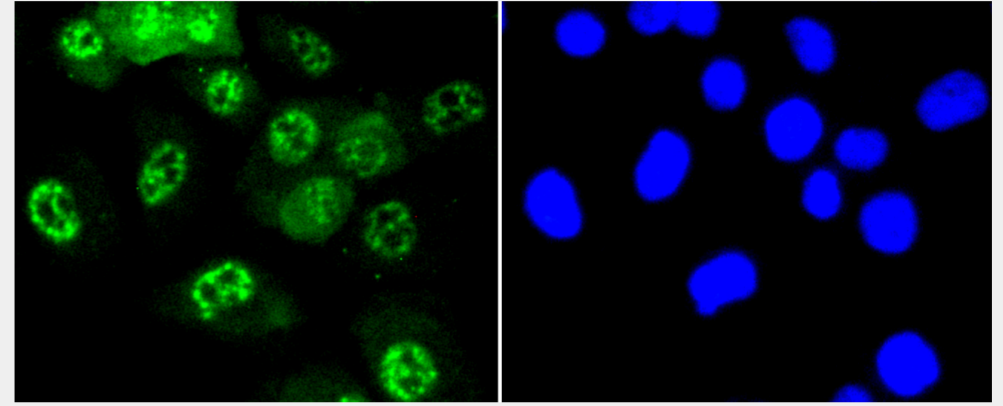
Immunohistochemistry of paraffin-embedded human uterus using Phospho-JNK1/2/3-T183/T183/T221 antibody at dilution of 1:100 (40x lens).



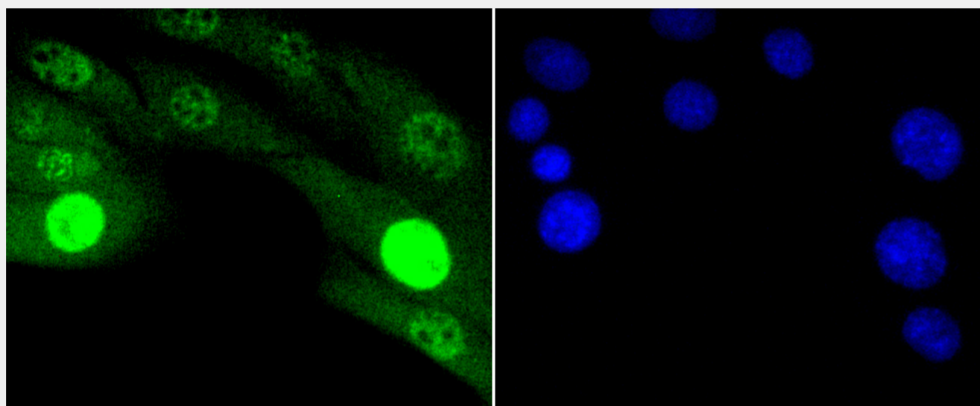
Immunohistochemistry of paraffin-embedded human liver using Phospho-JNK1/2/3-T183/T183/T221 antibody at dilution of 1:100 (40x lens).



Immunofluorescence analysis of HeLa cells using Phospho-JNK1/2/3-T183/T183/T221 antibody.



Immunofluorescence analysis of HUVEC cells using Phospho-JNK1/2/3-T183/T183/T221 antibody.



Immunofluorescence analysis of NIH-3T3 cells using Phospho-JNK1/2/3-T183/T183/T221 antibody.

All products are for RESEARCH USE ONLY. Not for diagnostic & therapeutic purposes!