

Anti MAP1LC3A Antibody

Catalog No: tcsa15294



Available Sizes

Size: 100µl



Specifications

Application:

WB, IHC, IF, IP

Species Reactivity:

Human, Mouse, Rat

Host Species:

Rabbit

Immunogen / Amino acids:

Recombinant protein of human MAP1LC3A

Conjugation:

Unconjugated

Clonality:

Monoclonal

Isotype:

IgG

Form:

Liquid

Storage Buffer:

PBS with 0.02% sodium azide, 50% glycerol, pH7.3.

Recommended Dilution:

WB 1:500 - 1:2000

IHC 1:50 - 1:200

IF 1:50 - 1:200

IP 1:20 - 1:50

Storage Instruction:

Store at -20C. Avoid freeze / thaw cycles.

Alternative Names:

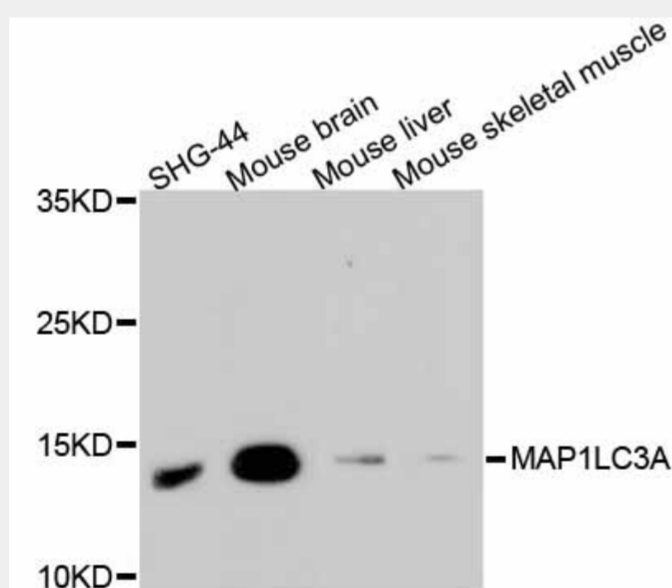
MAP1LC3A antibody; Microtubule-associated proteins 1A/1B light chain 3A antibody; Autophagy-related protein LC3 A antibody; Autophagy-related ubiquitin-like modifier LC3 A antibody; MAP1 light chain 3-like protein 1 antibody; MAP1A/MAP1B li

SwissProt:

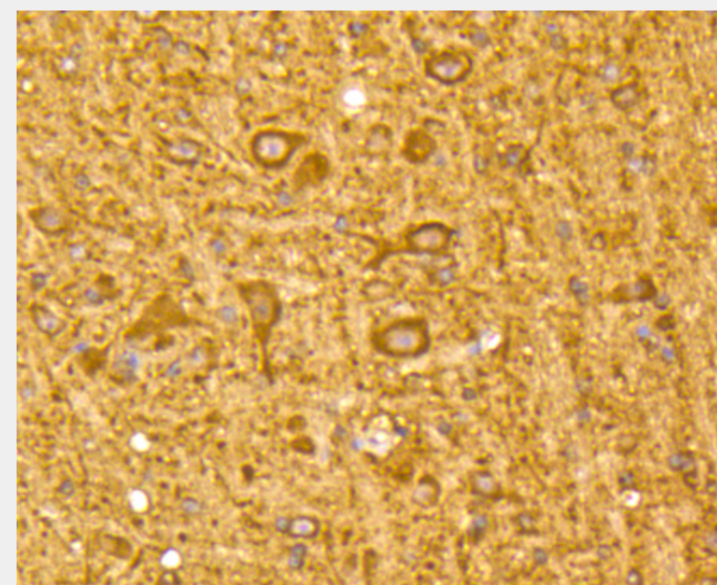
Q9H492

Product Description

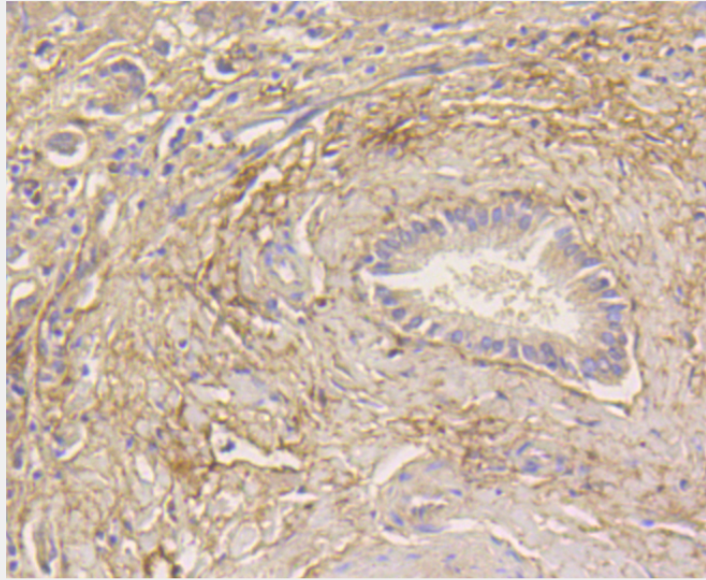
MAP1A and MAP1B are microtubule-associated proteins which mediate the physical interactions between microtubules and components of the cytoskeleton. MAP1A and MAP1B each consist of a heavy chain subunit and multiple light chain subunits. The protein encoded by this gene is one of the light chain subunits and can associate with either MAP1A or MAP1B. Two transcript variants encoding different isoforms have been found for this gene. The expression of variant 1 is suppressed in many tumor cell lines, suggesting that may be involved in carcinogenesis.



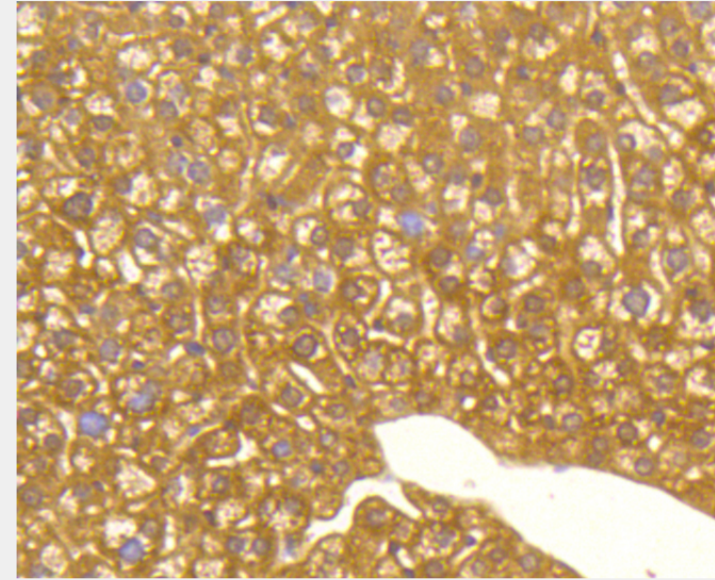
Western blot analysis of extracts of various cell lines, using MAP1LC3A antibody.
Secondary antibody: HRP Goat Anti-Rabbit IgG (H+L) at 1:10000 dilution.
Lysates/proteins: 25ug per lane. Blocking buffer: 3% nonfat dry milk in TBST.



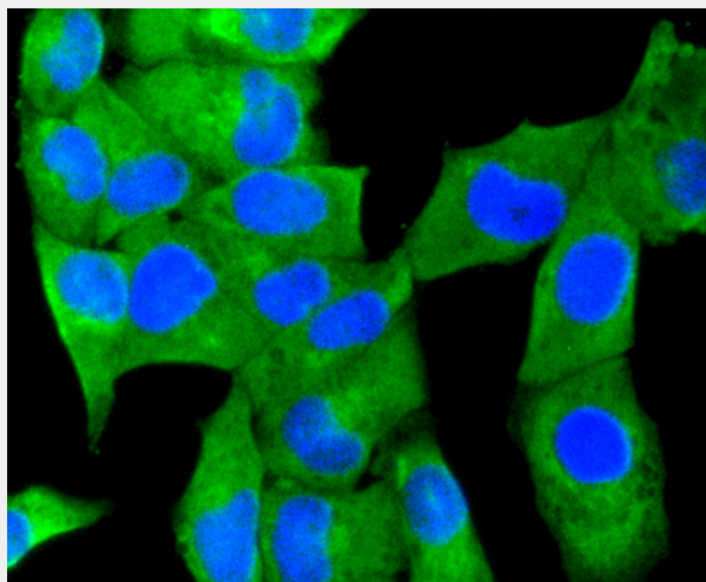
Immunohistochemistry of paraffin-embedded mouse brain using MAP1LC3A antibody at dilution of 1:100 (40x lens).



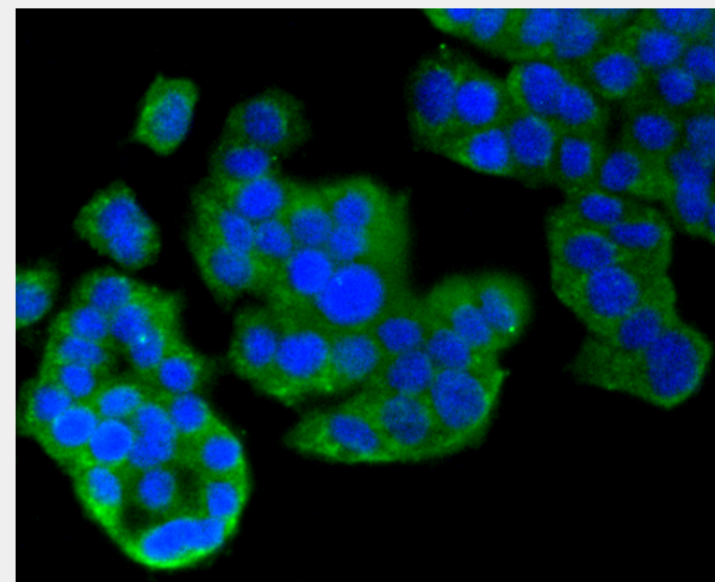
Immunohistochemistry of paraffin-embedded human liver using MAP1LC3A antibody at dilution of 1:100 (40x lens).



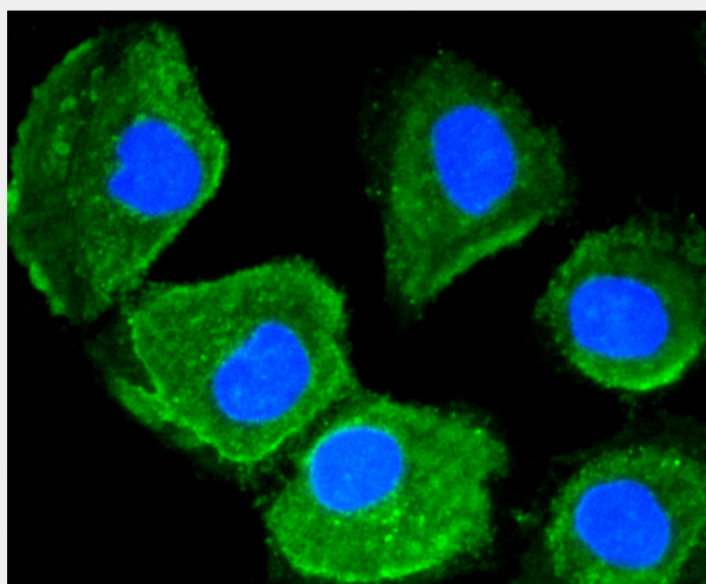
Immunohistochemistry of paraffin-embedded mouse liver using MAP1LC3A antibody at dilution of 1:100 (40x lens).



Immunofluorescence analysis of HeLa cells using MAP1LC3A antibody.



Immunofluorescence analysis of PC-12 cells using MAP1LC3A antibody.



Immunofluorescence analysis of HUVEC cells using MAP1LC3A antibody.

All products are for RESEARCH USE ONLY. Not for diagnostic & therapeutic purposes!