

Anti CBX5 Antibody

Catalog No: tcsa15280



Available Sizes

Size: 100µl



Specifications

Application:

WB, IHC, IF, IP

Species Reactivity:

Human, Mouse, Rat

Host Species:

Rabbit

Immunogen / Amino acids:

Recombinant protein of human CBX5

Conjugation:

Unconjugated

Clonality:

Monoclonal

Isotype:

IgG

Form:

Liquid

Storage Buffer:

PBS with 0.02% sodium azide, 50% glycerol, pH7.3.

Recommended Dilution:

WB 1:500 - 1:2000

IHC 1:50 - 1:200

IF 1:50 - 1:200

IP 1:20 - 1:50

Storage Instruction:

Store at -20C. Avoid freeze / thaw cycles.

Alternative Names:

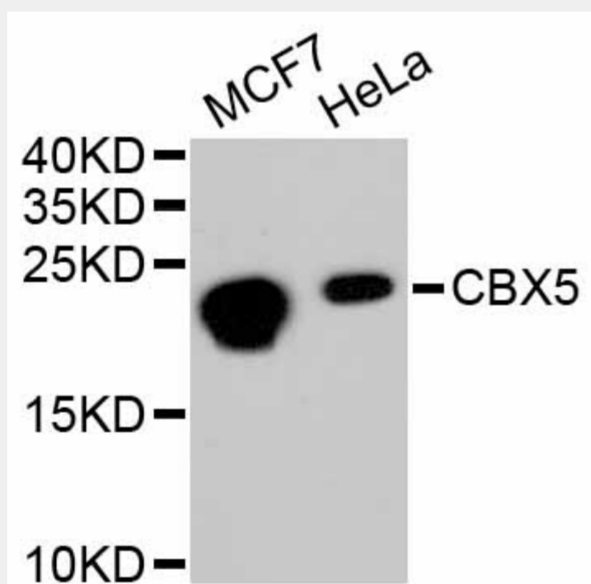
CBX5 antibody; Chromobox protein homolog 5 antibody; Antigen p25 antibody; Heterochromatin protein 1 homolog alpha antibody; HP1 alpha antibody; CBX5 antibody; HP1A antibody

SwissProt:

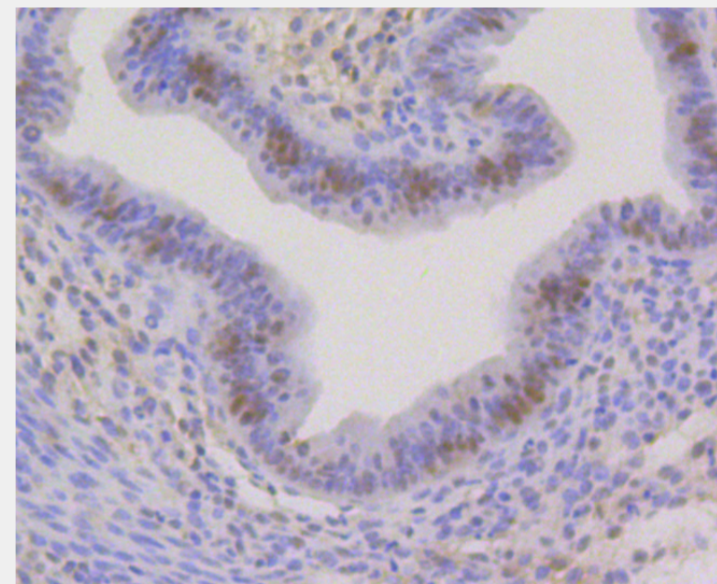
P45973

Product Description

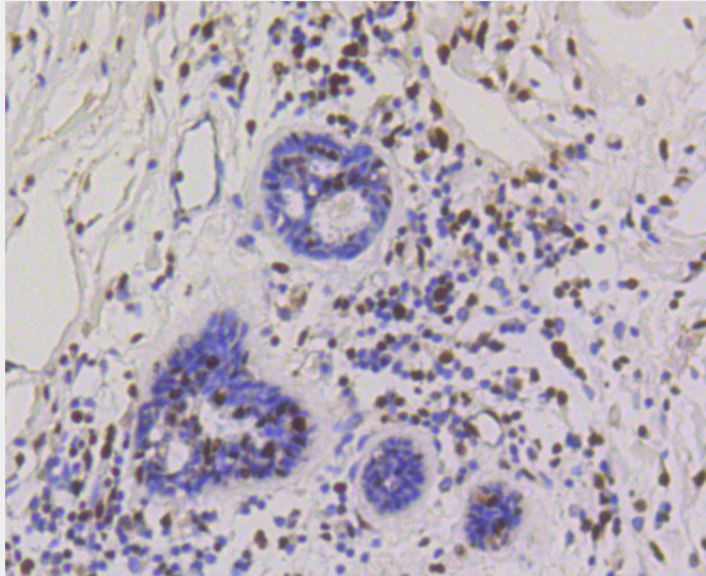
This gene encodes a highly conserved nonhistone protein, which is a member of the heterochromatin protein family. The protein is enriched in the heterochromatin and associated with centromeres. The protein has a single N-terminal chromodomain which can bind to histone proteins via methylated lysine residues, and a C-terminal chromo shadow-domain (CSD) which is responsible for the homodimerization and interaction with a number of chromatin-associated nonhistone proteins. The encoded product is involved in the formation of functional kinetochore through interaction with essential kinetochore proteins. The gene has a pseudogene located on chromosome 3. Multiple alternatively spliced variants, encoding the same protein, have been identified.



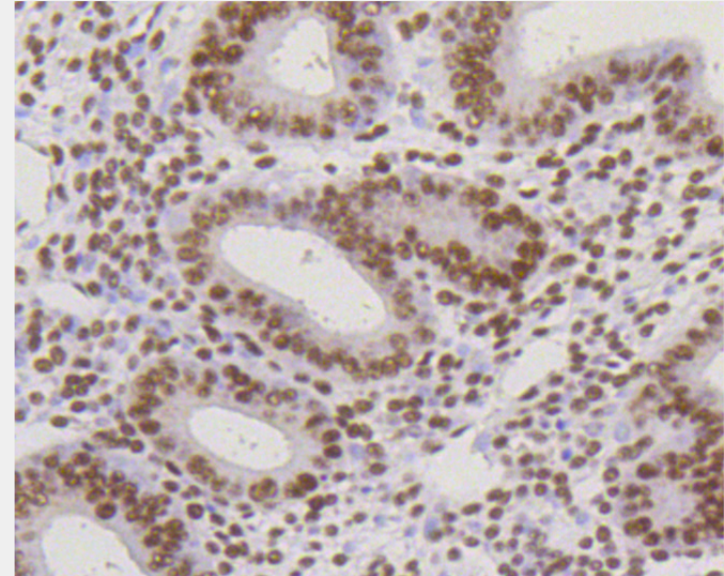
Western blot analysis of extracts of various cell lines, using CBX5 antibody.
Secondary antibody: HRP Goat Anti-Rabbit IgG (H+L) at 1:10000 dilution.
Lysates/proteins: 25ug per lane. Blocking buffer: 3% nonfat dry milk in TBST.



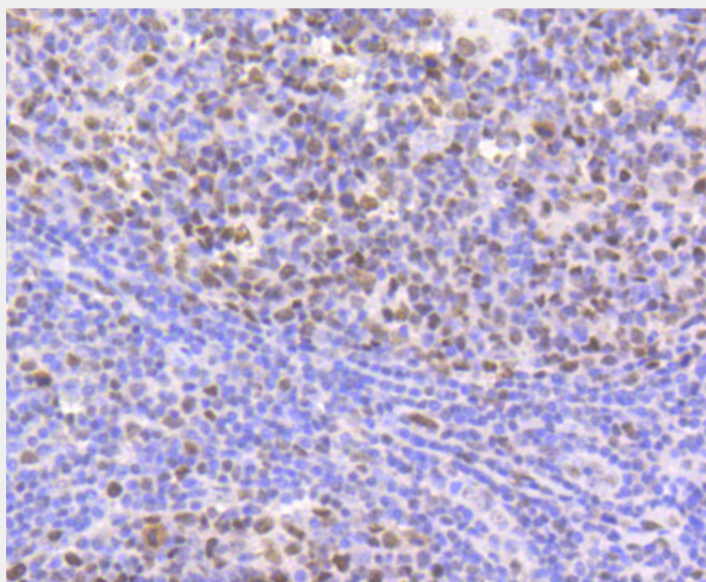
Immunohistochemistry of paraffin-embedded mouse uterus using CBX5 antibody at dilution of 1:100 (40x lens).



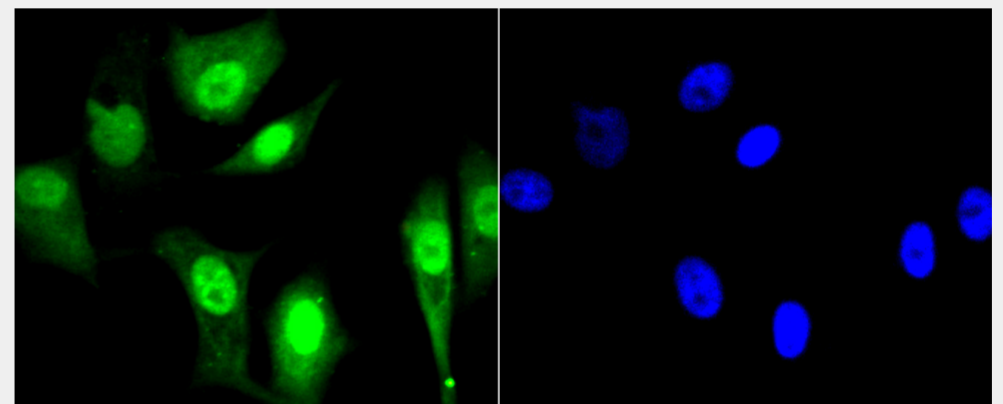
Immunohistochemistry of paraffin-embedded human mammary cancer using CBX5 antibody at dilution of 1:100 (40x lens).



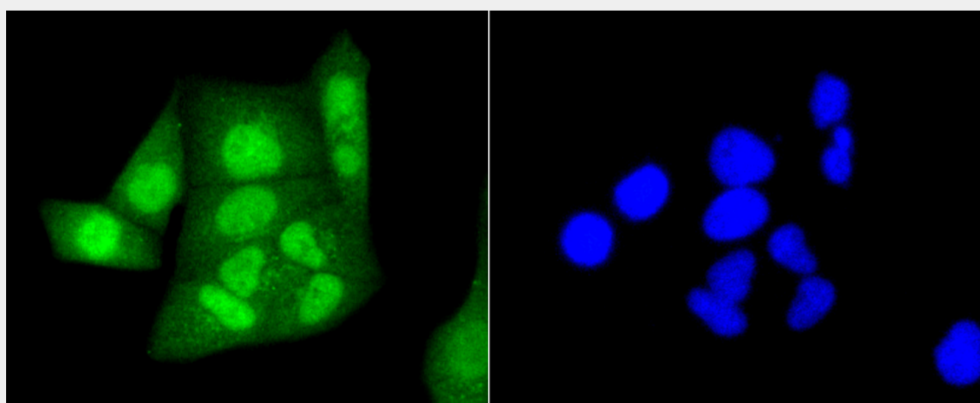
Immunohistochemistry of paraffin-embedded human uterus using CBX5 antibody at dilution of 1:100 (40x lens).



Immunohistochemistry of paraffin-embedded human tonsil using CBX5 antibody at dilution of 1:100 (40x lens).



Immunofluorescence analysis of MCF-7 cells using CBX5 antibody.



Immunofluorescence analysis of HeLa cells using CBX5 antibody.

All products are for RESEARCH USE ONLY. Not for diagnostic & therapeutic purposes!