

# Anti TOMM20 Antibody

Catalog No: tcsa15266



## Available Sizes

---

**Size:** 100µl



## Specifications

---

**Application:**

WB, IHC, IF

**Species Reactivity:**

Human, Mouse, Rat

**Host Species:**

Rabbit

**Immunogen / Amino acids:**

Recombinant protein of human TOMM20

**Conjugation:**

Unconjugated

**Clonality:**

Monoclonal

**Isotype:**

IgG

**Form:**

Liquid

**Storage Buffer:**

PBS with 0.02% sodium azide, 50% glycerol, pH7.3.

**Recommended Dilution:**

WB 1:500 - 1:2000

IHC 1:50 - 1:200

IF 1:50 - 1:200

**Storage Instruction:**

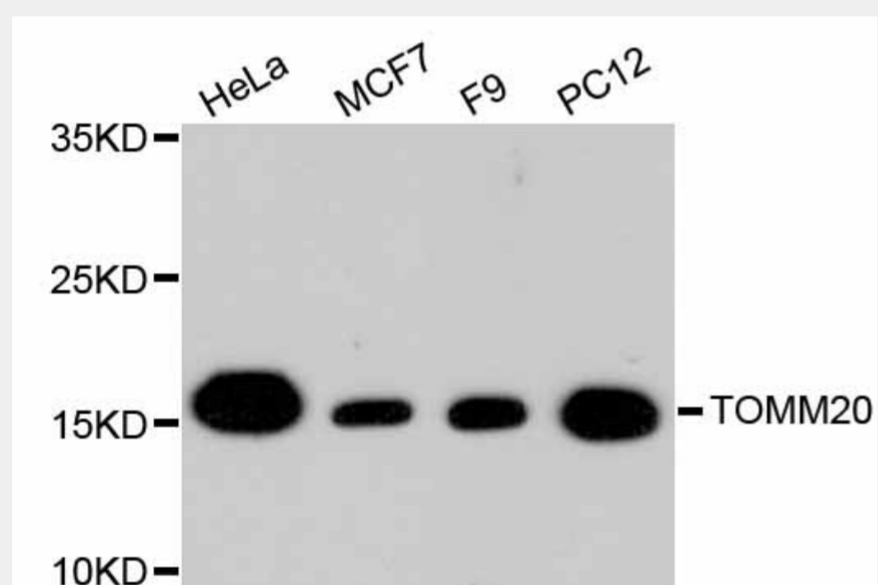
Store at -20C. Avoid freeze / thaw cycles.

**Alternative Names:**

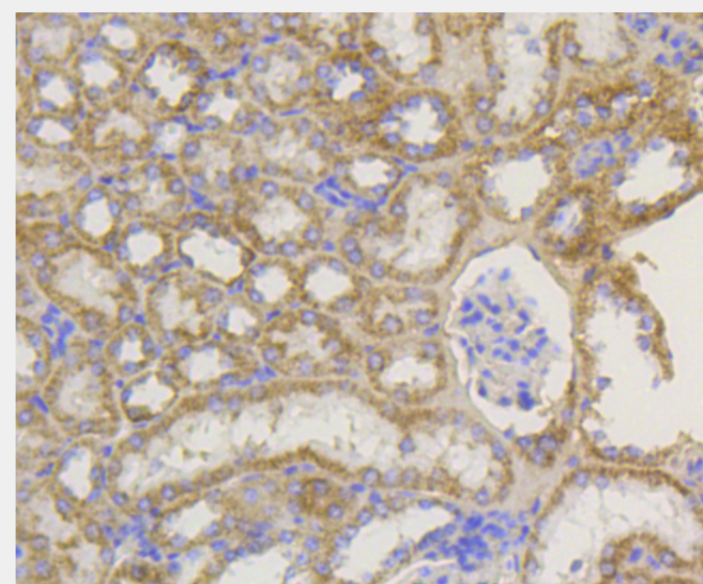
TOMM20 antibody; Mitochondrial import receptor subunit TOM20 homolog antibody; Mitochondrial 20 kDa outer membrane protein antibody; Outer mitochondrial membrane receptor Tom20 antibody; TOMM20 antibody; KIAA0016 antibody

**SwissProt:**

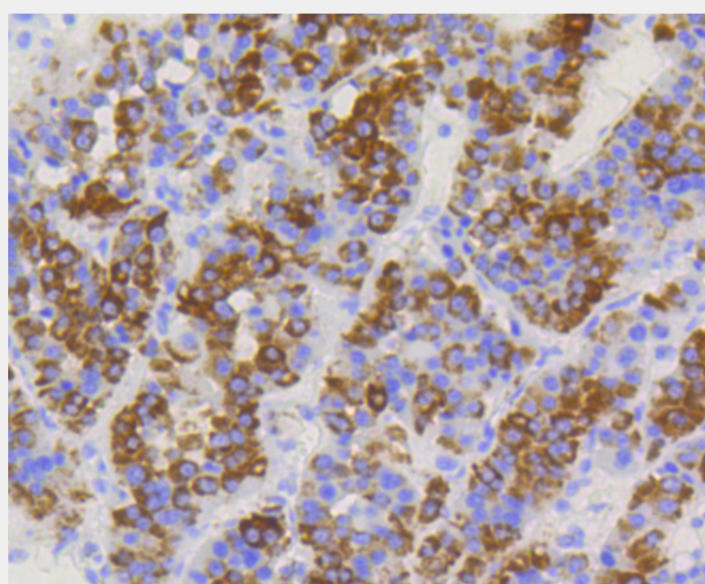
Q15388



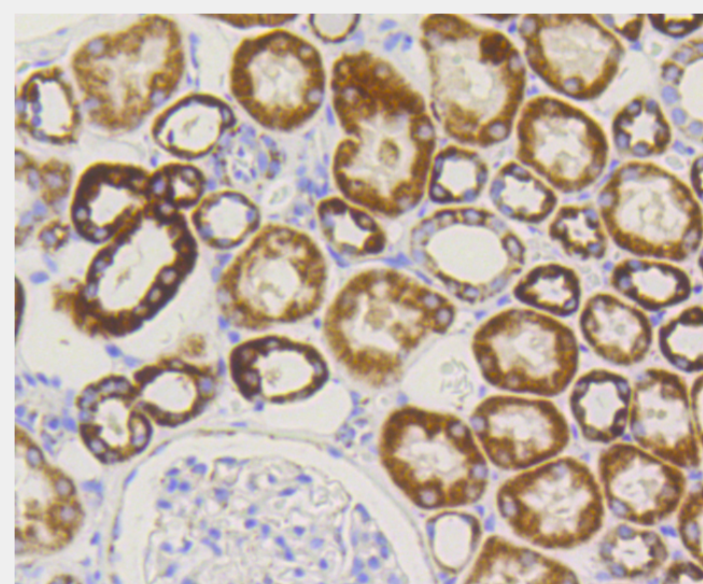
Western blot analysis of extracts of various cell lines, using TOMM20 antibody.  
Secondary antibody: HRP Goat Anti-Rabbit IgG (H+L) at 1:10000 dilution.  
Lysates/proteins: 25ug per lane. Blocking buffer: 3% nonfat dry milk in TBST.



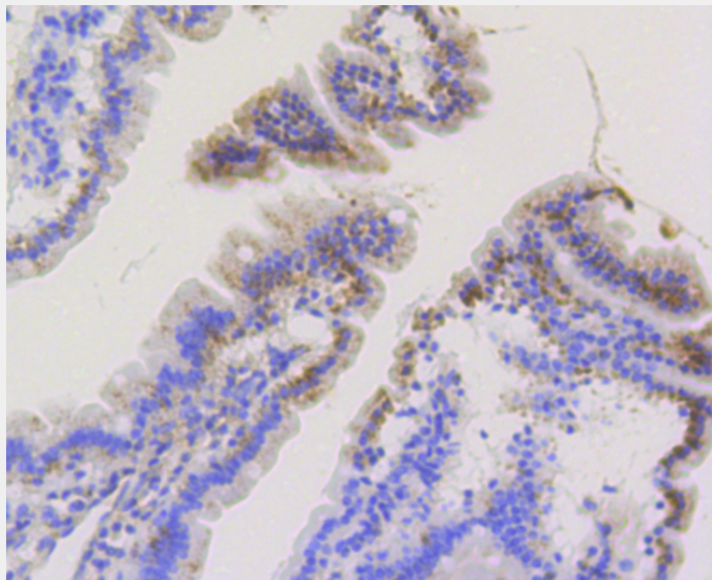
Immunohistochemistry of paraffin-embedded mouse kidney using TOMM20 antibody at dilution of 1:100 (40x lens).



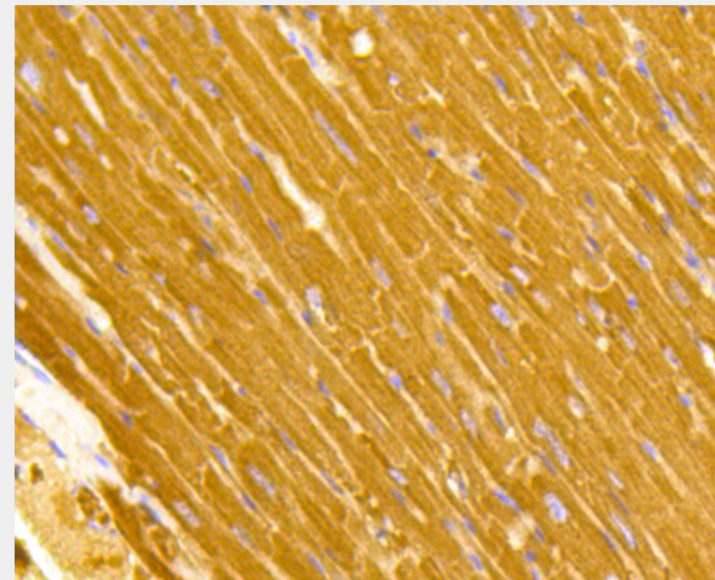
Immunohistochemistry of paraffin-embedded human liver cancer using TOMM20 antibody at dilution of 1:100 (40x lens).



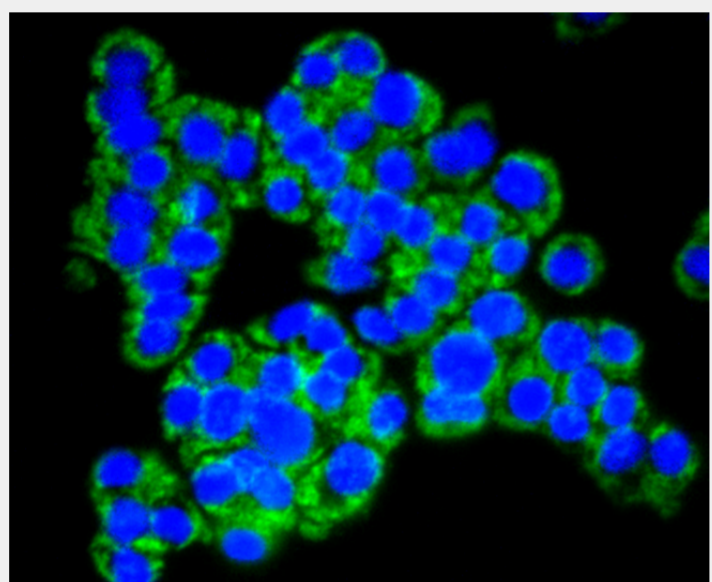
Immunohistochemistry of paraffin-embedded human kidney using TOMM20 antibody at dilution of 1:100 (40x lens).



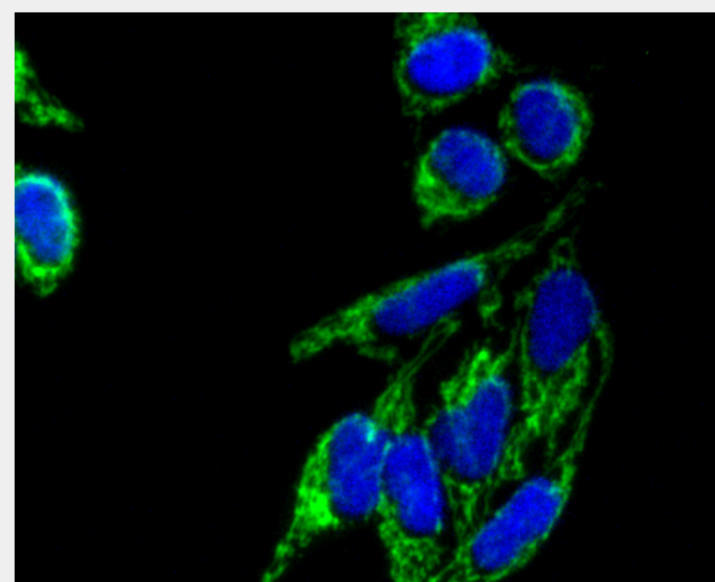
Immunohistochemistry of paraffin-embedded mouse intestine using TOMM20 antibody at dilution of 1:100 (40x lens).



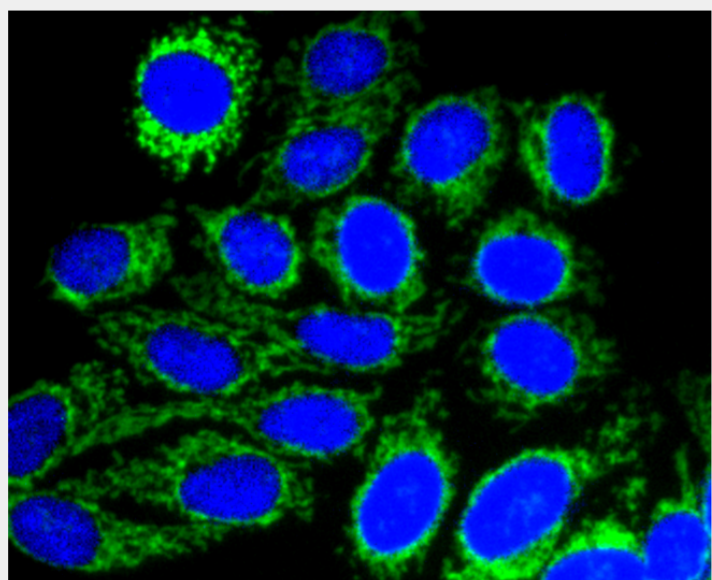
Immunohistochemistry of paraffin-embedded mouse heart using TOMM20 antibody at dilution of 1:100 (40x lens).



Immunofluorescence analysis of PC-12 cells using TOMM20 antibody.



Immunofluorescence analysis of HeLa cells using TOMM20 antibody.



Immunofluorescence analysis of HepG2 cells using TOMM20 antibody.

All products are for RESEARCH USE ONLY. Not for diagnostic & therapeutic purposes!