

Anti TP53 Antibody

Catalog No: tcsa15254



Available Sizes

Size: 100µl



Specifications

Application:

WB, IHC, IF

Species Reactivity:

Human, Mouse

Host Species:

Rabbit

Immunogen / Amino acids:

A synthetic peptide of mouse TP53

Conjugation:

Unconjugated

Clonality:

Polyclonal

Isotype:

IgG

Form:

Liquid

Storage Buffer:

PBS with 0.02% sodium azide, 50% glycerol, pH7.3.

Recommended Dilution:

WB 1:500 - 1:2000

IHC 1:50 - 1:200

IF 1:50 - 1:100

Storage Instruction:

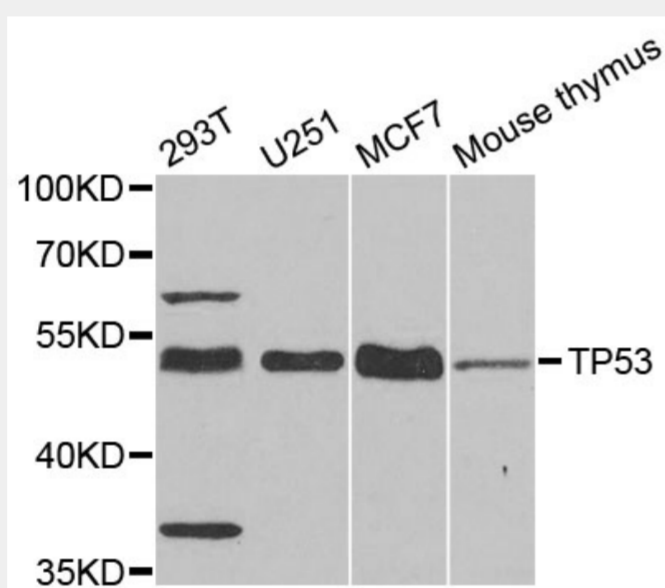
Store at -20C. Avoid freeze / thaw cycles.

Alternative Names:

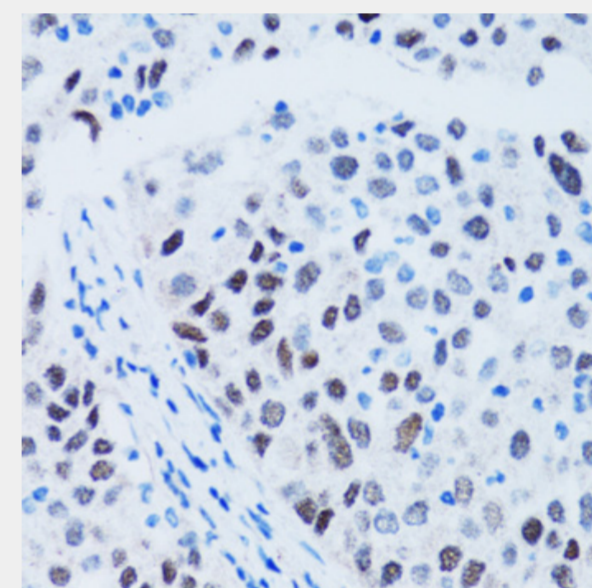
anti-TP53 antibody

Product Description

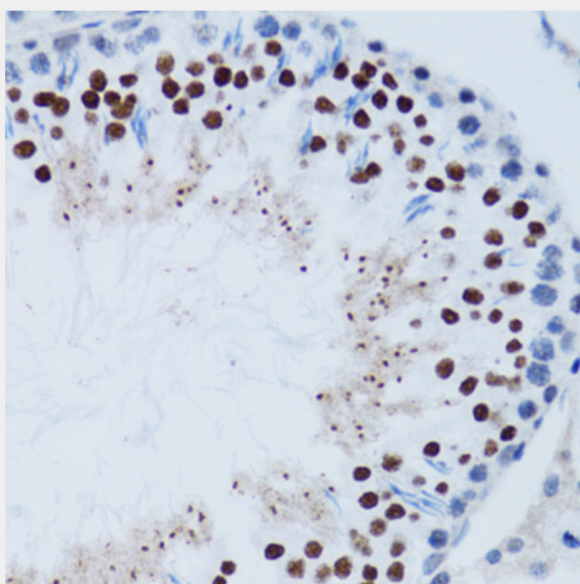
This gene encodes a tumor suppressor protein containing transcriptional activation, DNA binding, and oligomerization domains. The encoded protein responds to diverse cellular stresses to regulate expression of target genes, thereby inducing cell cycle arrest, apoptosis, senescence, DNA repair, or changes in metabolism. Mutations in this gene are associated with a variety of human cancers, including hereditary cancers such as Li-Fraumeni syndrome. Alternative splicing of this gene and the use of alternate promoters result in multiple transcript variants and isoforms. Additional isoforms have also been shown to result from the use of alternate translation initiation codons from identical transcript variants (PMIDs: 12032546, 20937277).



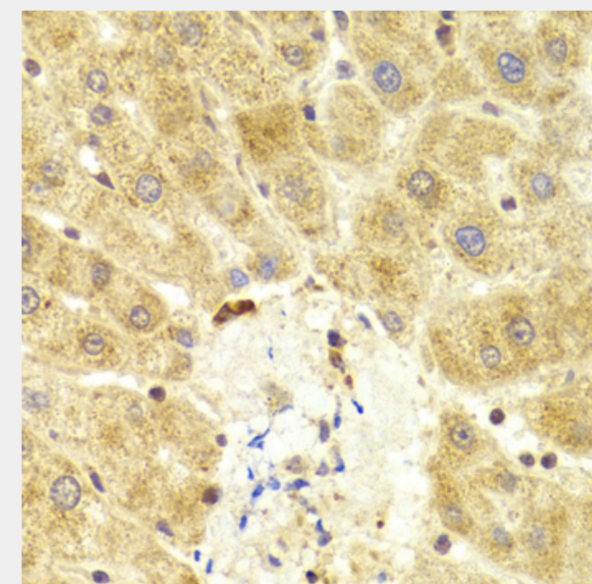
Western blot analysis of extracts of various cell lines, using TP53 antibody at 1:1000 dilution. Secondary antibody: HRP Goat Anti-Rabbit IgG (H+L) at 1:10000 dilution. Lysates/proteins: 25ug per lane. Blocking buffer: 3% nonfat dry milk in TBST. Detection: ECL Basic Kit. Exposure time: 60s.



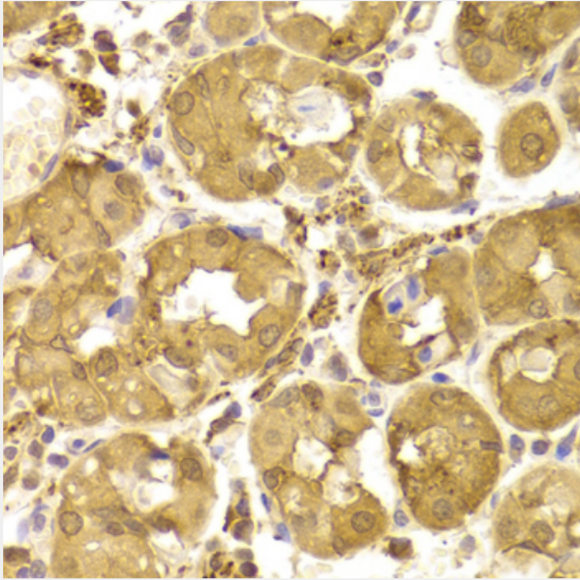
Immunohistochemistry of paraffin-embedded human lung cancer using TP53 antibody at dilution of 1:100 (40x lens).



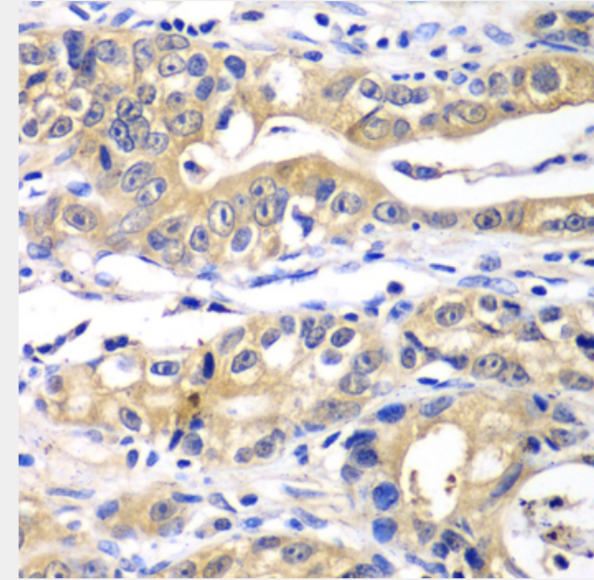
Immunohistochemistry of paraffin-embedded mouse testis using TP53 antibody at dilution of 1:100 (40x lens).



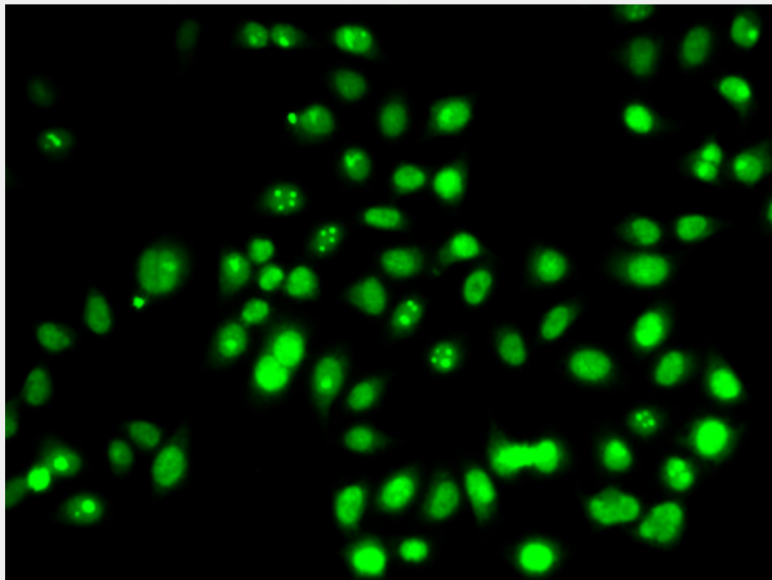
Immunohistochemistry of paraffin-embedded human liver using TP53 antibody at dilution of 1:100 (40x lens).



Immunohistochemistry of paraffin-embedded human stomach using TP53 antibody at dilution of 1:100 (40x lens).



Immunohistochemistry of paraffin-embedded human gastric cancer using TP53 antibody at dilution of 1:100 (40x lens).



Immunofluorescence analysis of HeLa cells using TP53 antibody.

All products are for RESEARCH USE ONLY. Not for diagnostic & therapeutic purposes!