

# Anti SLC2A1 Antibody

Catalog No: tcsa15242



## Available Sizes

---

**Size:** 100µl

---



## Specifications

---

**Application:**

WB, IHC, IF

---

**Species Reactivity:**

Human, Mouse, Rat

---

**Host Species:**

Rabbit

---

**Immunogen / Amino acids:**

Recombinant protein of human SLC2A1

---

**Conjugation:**

Unconjugated

---

**Clonality:**

Monoclonal

---

**Isotype:**

IgG

---

**Form:**

Liquid

---

**Storage Buffer:**

PBS with 0.02% sodium azide, 50% glycerol, pH7.3.

---

**Recommended Dilution:**

WB 1:500 - 1:2000

IHC 1:50 - 1:200

IF 1:50 - 1:200

---

**Storage Instruction:**

Store at -20C. Avoid freeze / thaw cycles.

**Alternative Names:**

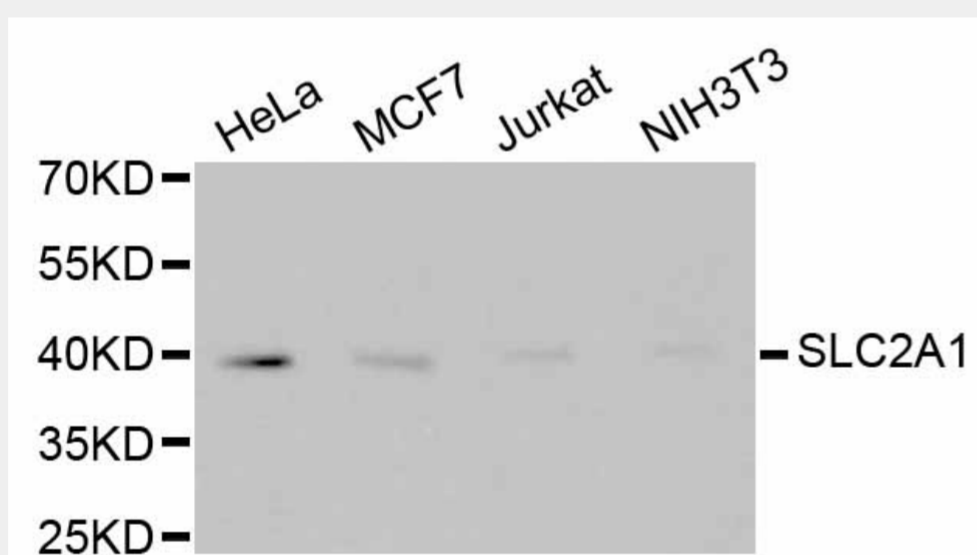
SLC2A1 antibody; Solute carrier family 2 antibody; facilitated glucose transporter member 1 antibody; Glucose transporter type 1 antibody; erythrocyte/brain antibody; GLUT-1 antibody; HepG2 glucose transporter antibody; SLC2A1 antibody

**SwissProt:**

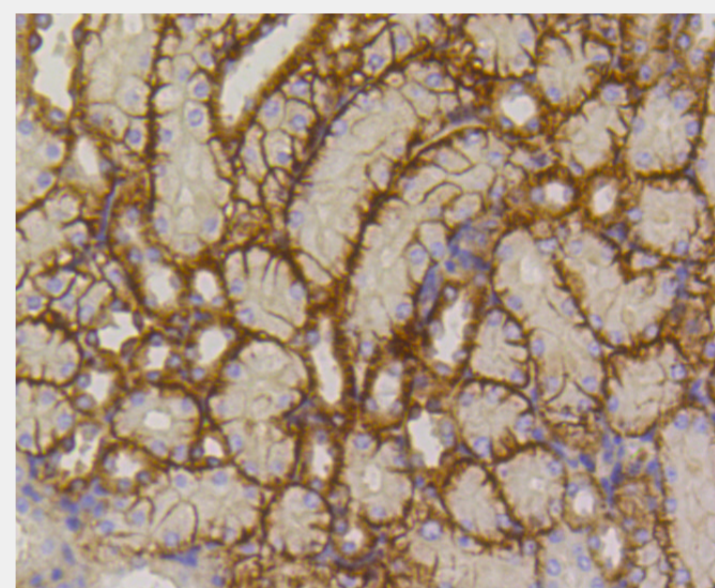
P11166

**Product Description**

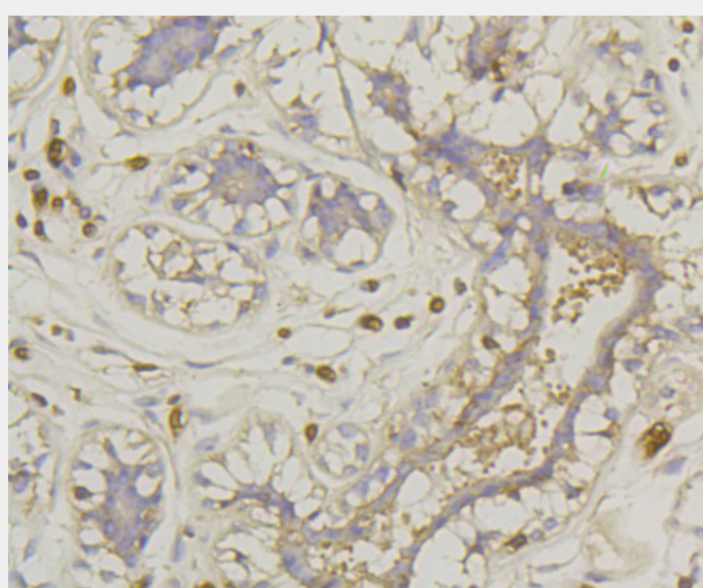
This gene encodes a major glucose transporter in the mammalian blood-brain barrier. The encoded protein is found primarily in the cell membrane and on the cell surface, where it can also function as a receptor for human T-cell leukemia virus (HTLV) I and II. Mutations in this gene have been found in a family with paroxysmal exertion-induced dyskinesia.



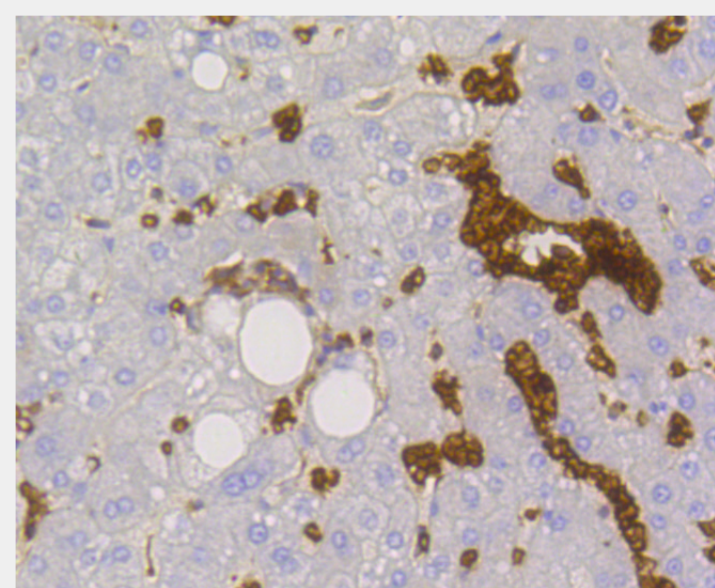
Western blot analysis of extracts of various cell lines, using SLC2A1 antibody.  
Secondary antibody: HRP Goat Anti-Rabbit IgG (H+L) at 1:10000 dilution.  
Lysates/proteins: 25ug per lane. Blocking buffer: 3% nonfat dry milk in TBST.



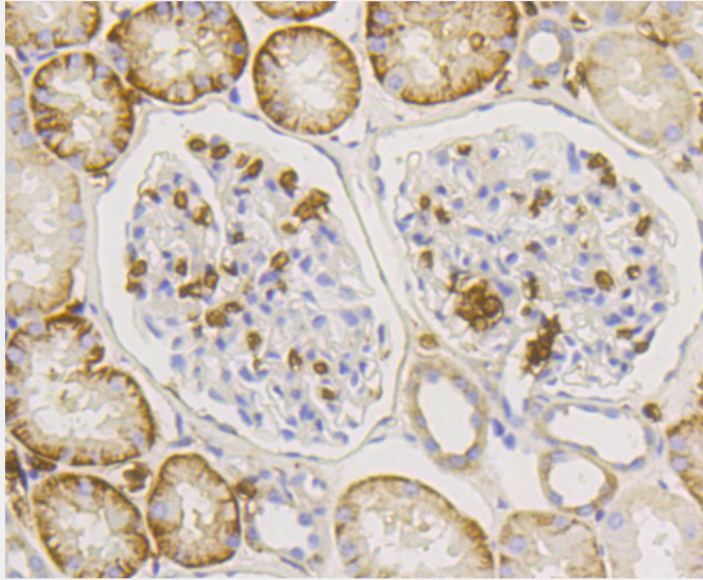
Immunohistochemistry of paraffin-embedded mouse kidney using SLC2A1 antibody at dilution of 1:100 (40x lens).



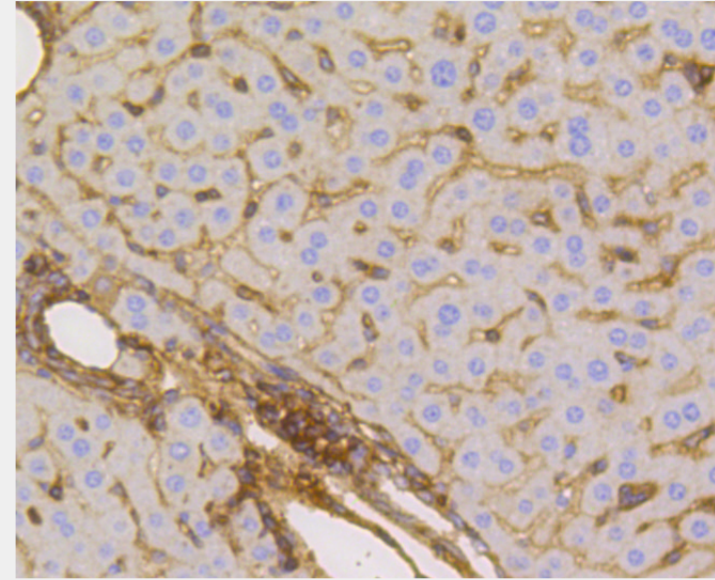
Immunohistochemistry of paraffin-embedded human mammary cancer using SLC2A1 antibody at dilution of 1:100 (40x lens).



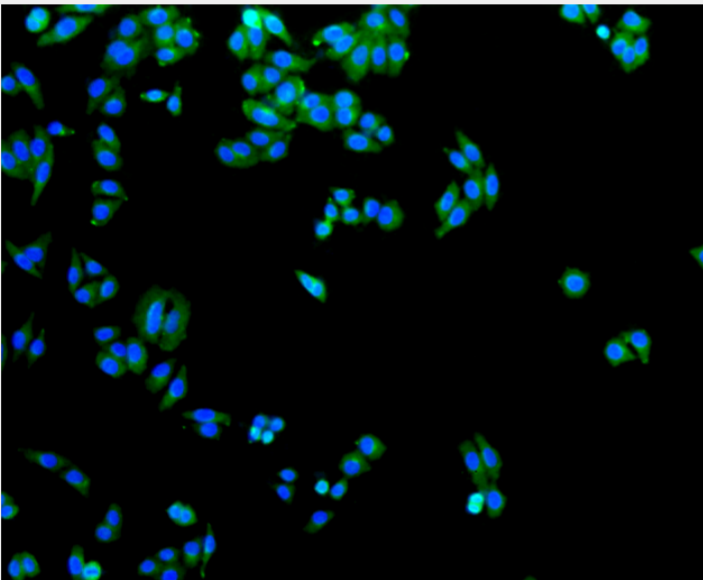
Immunohistochemistry of paraffin-embedded human liver using SLC2A1 antibody at dilution of 1:100 (40x lens).



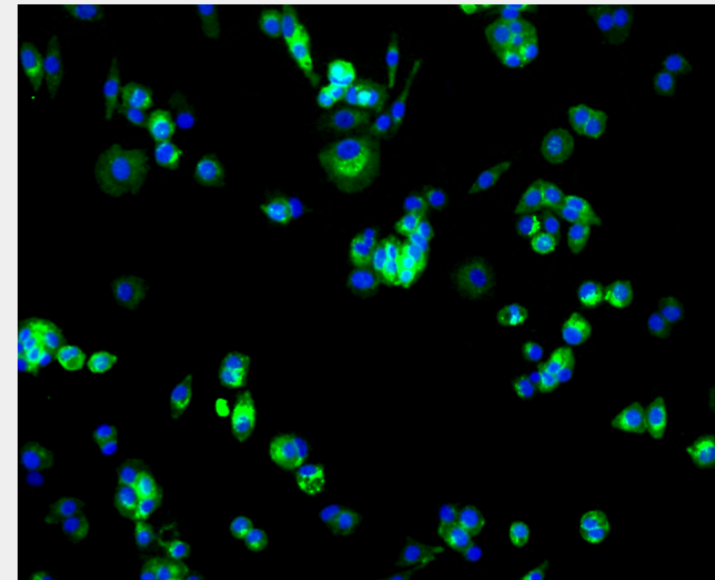
Immunohistochemistry of paraffin-embedded human kidney using SLC2A1 antibody at dilution of 1:100 (40x lens).



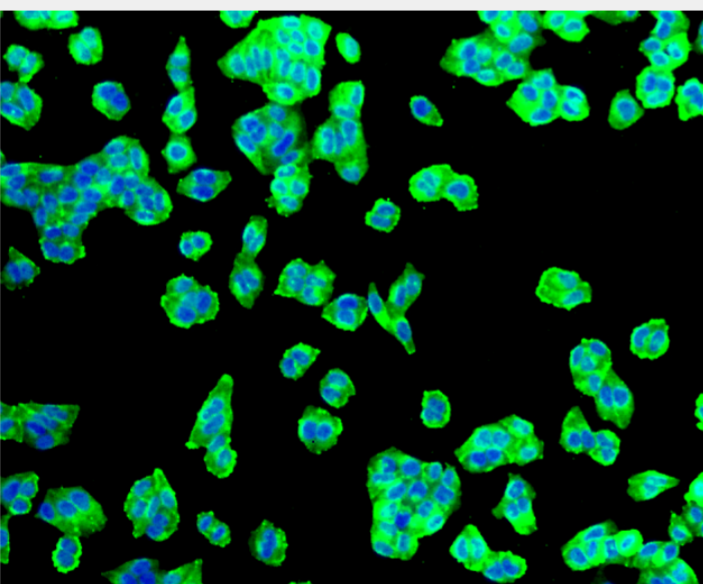
Immunohistochemistry of paraffin-embedded mouse liver using SLC2A1 antibody at dilution of 1:100 (40x lens).



Immunofluorescence analysis of HepG2 cells using SLC2A1 antibody.



Immunofluorescence analysis of MCF-7 cells using SLC2A1 antibody.



Immunofluorescence analysis of HeLa cells using SLC2A1 antibody.

All products are for RESEARCH USE ONLY. Not for diagnostic & therapeutic purposes!