

Anti RELA Antibody

Catalog No: tcsa15238



Available Sizes

Size: 100μl



Specifications

Application:

WB, IHC, IF

Species Reactivity:

Human, Mouse

Host Species:

Rabbit

Immunogen / Amino acids:

Recombinant protein of human RELA

Conjugation:

Unconjugated

Clonality:

Monoclonal

Isotype:

IgG

Form:

Liquid

Storage Buffer:

PBS with 0.02% sodium azide, 50% glycerol, pH7.3.

Recommended Dilution:

WB 1:5000 - 1:10000

IHC 1:50 - 1:100

IF 1:50 - 1:100

Storage Instruction:

Store at -20C. Avoid freeze / thaw cycles.

Alternative Names:

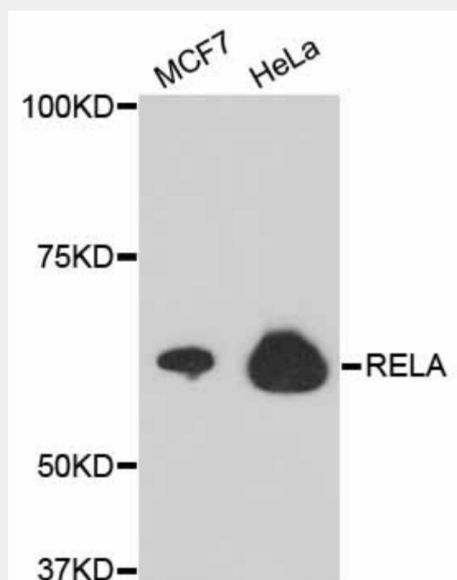
RELA antibody; Transcription factor p65 antibody; Nuclear factor NF-kappa-B p65 subunit antibody; Nuclear factor of kappa light polypeptide gene enhancer in B-cells 3 antibody; RELA antibody; NFKB3 antibody

SwissProt:

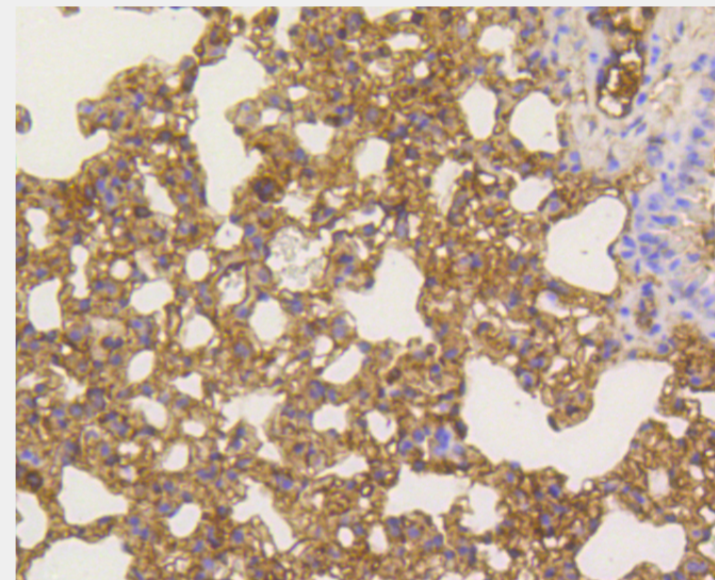
Q04206

Product Description

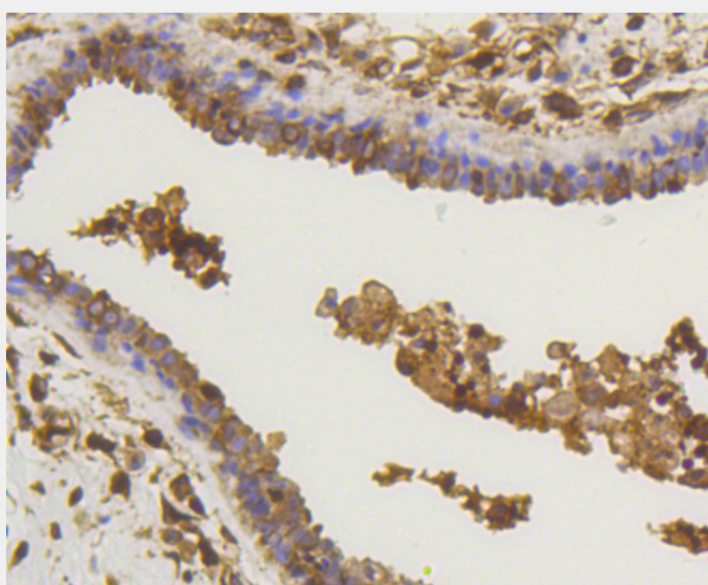
NF-kappa-B is a ubiquitous transcription factor involved in several biological processes. It is held in the cytoplasm in an inactive state by specific inhibitors. Upon degradation of the inhibitor, NF-kappa-B moves to the nucleus and activates transcription of specific genes. NF-kappa-B is composed of NFKB1 or NFKB2 bound to either REL, RELA, or RELB. The most abundant form of NF-kappa-B is NFKB1 complexed with the product of this gene, RELA. Four transcript variants encoding different isoforms have been found for this gene.



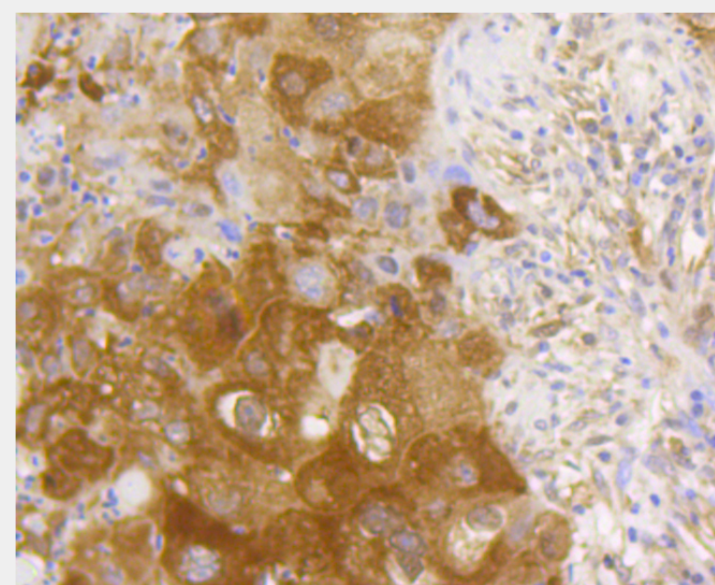
Western blot analysis of extracts of various cell lines, using RELA antibody.
Secondary antibody: HRP Goat Anti-Rabbit IgG (H+L) at 1:10000 dilution.
Lysates/proteins: 25ug per lane. Blocking buffer: 3% nonfat dry milk in TBST.



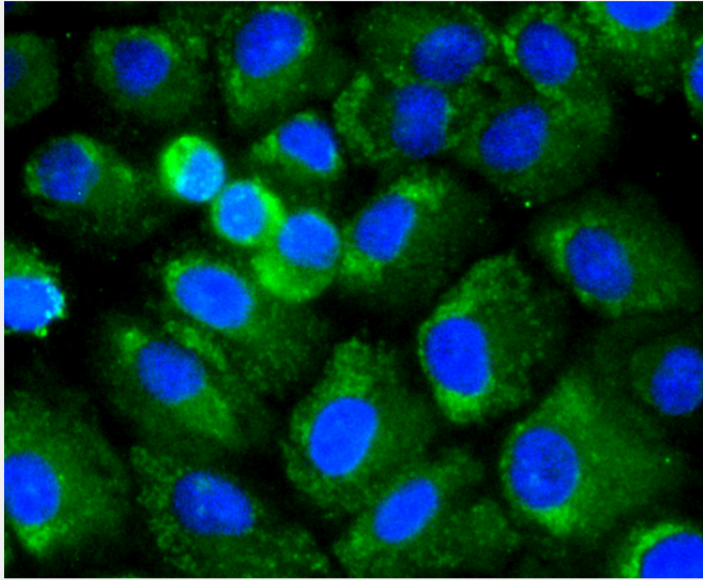
Immunohistochemistry of paraffin-embedded mouse lung using RELA antibody at dilution of 1:100 (40x lens).



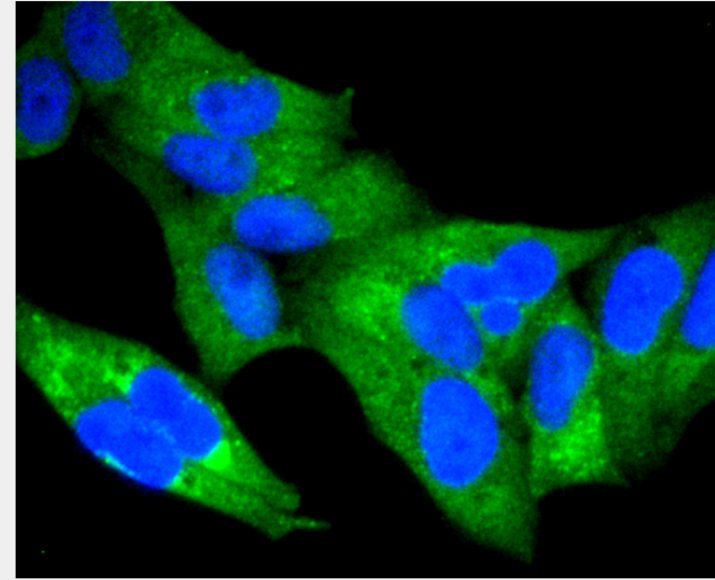
Immunohistochemistry of paraffin-embedded human mammary cancer using RELA antibody at dilution of 1:100 (40x lens).



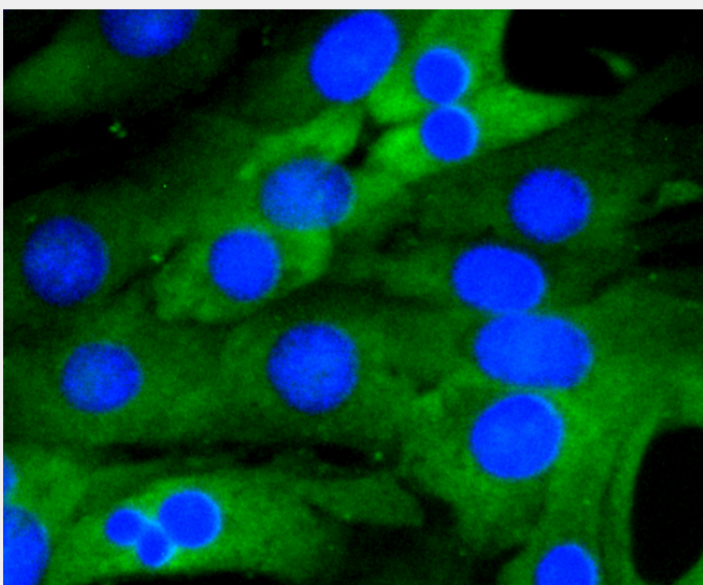
Immunohistochemistry of paraffin-embedded human lung using RELA antibody at dilution of 1:100 (40x lens).



Immunofluorescence analysis of A549 cells using RELA antibody.



Immunofluorescence analysis of HeLa cells using RELA antibody.



Immunofluorescence analysis of NIH-3T3 cells using RELA antibody.

All products are for RESEARCH USE ONLY. Not for diagnostic & therapeutic purposes!