

Anti PTPN6 Antibody

Catalog No: tcsa15231



Available Sizes

Size: 100μl



Specifications

Application:

WB, IHC

Species Reactivity:

Human, Mouse, Rat

Host Species:

Rabbit

Immunogen / Amino acids:

Recombinant protein of human PTPN6

Conjugation:

Unconjugated

Clonality:

Monoclonal

Isotype:

IgG

Form:

Liquid

Storage Buffer:

PBS with 0.02% sodium azide, 50% glycerol, pH7.3.

Recommended Dilution:

WB 1:500 - 1:2000

IHC 1:50 - 1:200

Storage Instruction:

Store at -20C. Avoid freeze / thaw cycles.

Alternative Names:

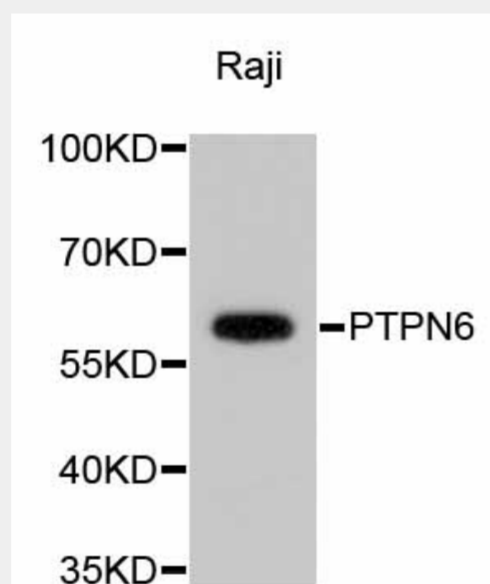
PTPN6 antibody; Tyrosine-protein phosphatase non-receptor type 6 antibody; PTPN6 antibody; HCP antibody; PTP1C antibody

SwissProt:

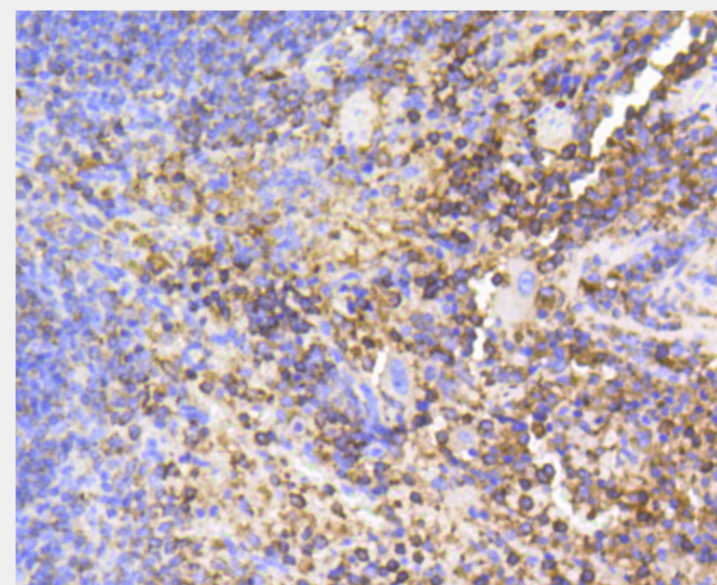
P29350

Product Description

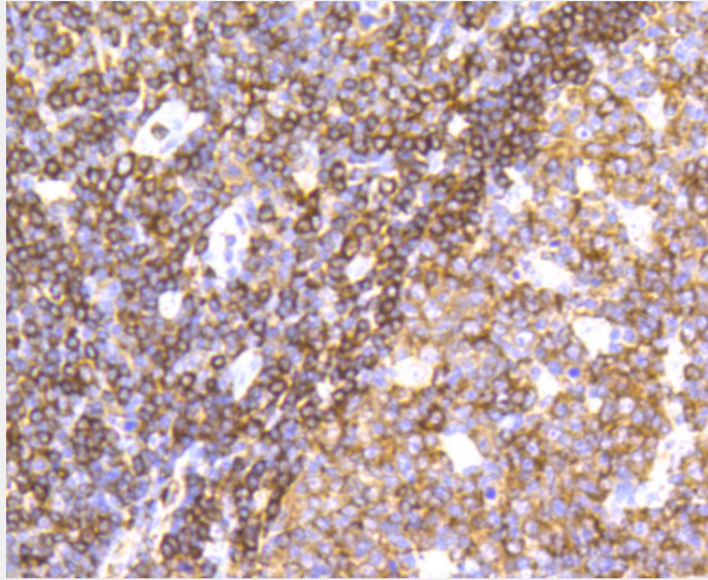
The protein encoded by this gene is a member of the protein tyrosine phosphatase (PTP) family. PTPs are known to be signaling molecules that regulate a variety of cellular processes including cell growth, differentiation, mitotic cycle, and oncogenic transformation. N-terminal part of this PTP contains two tandem Src homolog (SH2) domains, which act as protein phospho-tyrosine binding domains, and mediate the interaction of this PTP with its substrates. This PTP is expressed primarily in hematopoietic cells, and functions as an important regulator of multiple signaling pathways in hematopoietic cells. This PTP has been shown to interact with, and dephosphorylate a wide spectrum of phospho-proteins involved in hematopoietic cell signaling. Multiple alternatively spliced variants of this gene, which encode distinct isoforms, have been reported.



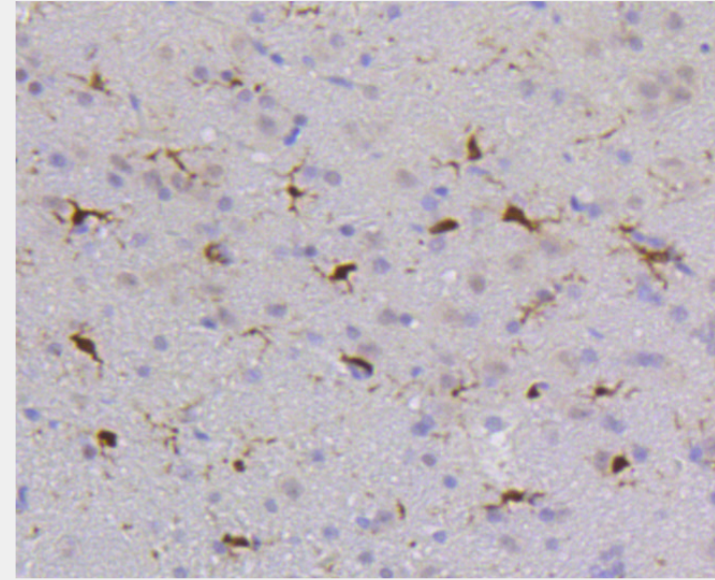
Western blot analysis of extracts of Raji cells, using PTPN6 antibody. Secondary antibody: HRP Goat Anti-Rabbit IgG (H+L) at 1:10000 dilution. Lysates/proteins: 25ug per lane. Blocking buffer: 3% nonfat dry milk in TBST.



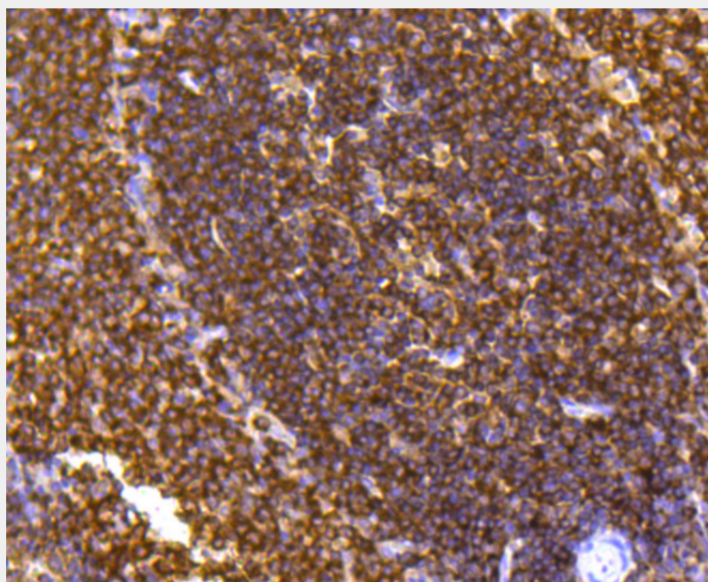
Immunohistochemistry of paraffin-embedded mouse spleen using PTPN6 antibody at dilution of 1:100 (40x lens).



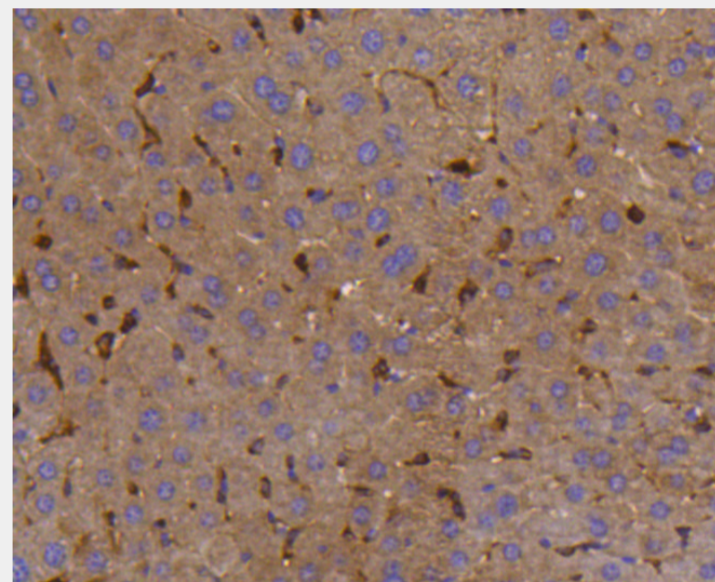
Immunohistochemistry of paraffin-embedded human tonsil using PTPN6 antibody at dilution of 1:100 (40x lens).



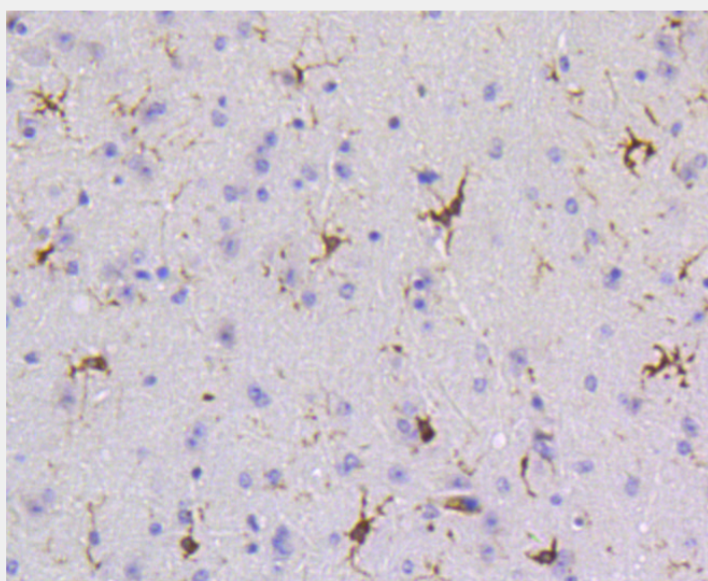
Immunohistochemistry of paraffin-embedded rat brain using PTPN6 antibody at dilution of 1:100 (40x lens).



Immunohistochemistry of paraffin-embedded rat spleen using PTPN6 antibody at dilution of 1:100 (40x lens).



Immunohistochemistry of paraffin-embedded mouse liver using PTPN6 antibody at dilution of 1:100 (40x lens).



Immunohistochemistry of paraffin-embedded mouse brain using PTPN6 antibody at dilution of 1:100 (40x lens).

All products are for RESEARCH USE ONLY. Not for diagnostic & therapeutic purposes!