

Anti PTK2 Antibody

Catalog No: tcsa15229



Available Sizes

Size: 100μl



Specifications

Application:

WB, IHC, IF, IP

Species Reactivity:

Human, Mouse, Rat

Host Species:

Rabbit

Immunogen / Amino acids:

Recombinant protein of human PTK2

Conjugation:

Unconjugated

Clonality:

Monoclonal

Isotype:

IgG

Form:

Liquid

Storage Buffer:

PBS with 0.02% sodium azide, 50% glycerol, pH7.3.

Recommended Dilution:

WB 1:500 - 1:2000

IHC 1:50 - 1:200

IF 1:50 - 1:200

IP 1:20 - 1:50

Storage Instruction:

Store at -20C. Avoid freeze / thaw cycles.

Alternative Names:

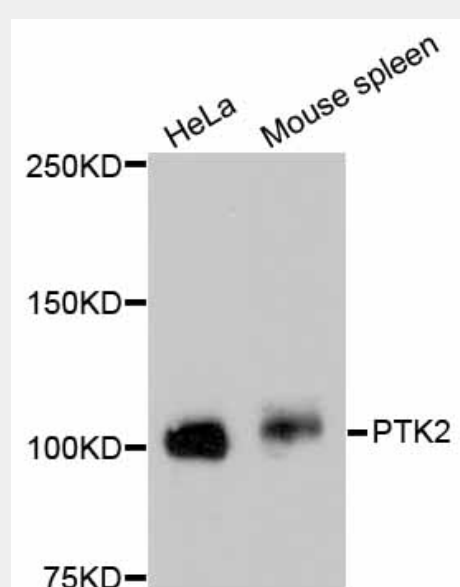
PTK2 antibody; Focal adhesion kinase 1 antibody; FADK 1 antibody; PTK2 antibody; FAK antibody; FAK1 antibody

SwissProt:

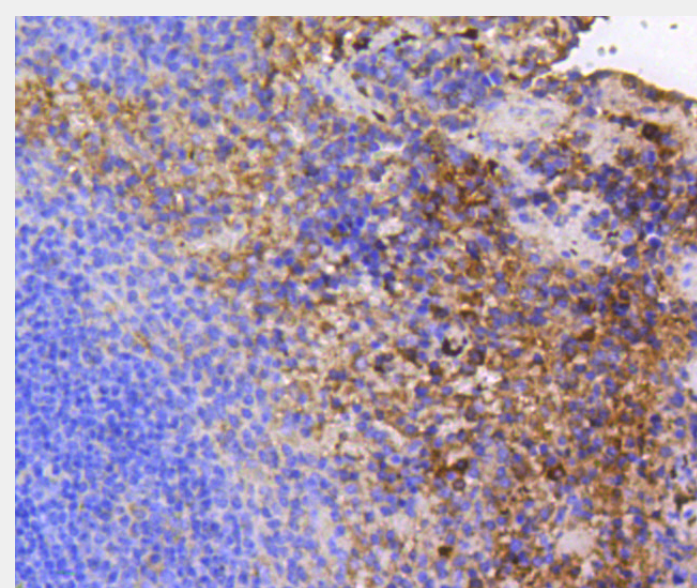
Q05397

Product Description

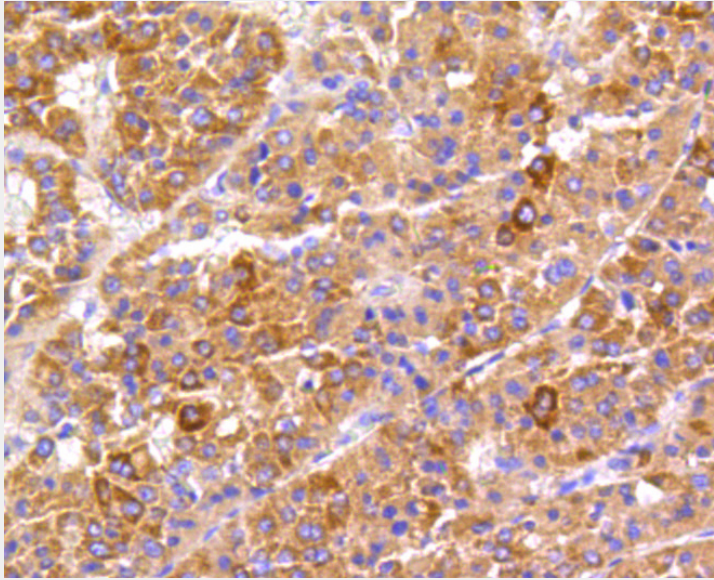
This gene encodes a cytoplasmic protein tyrosine kinase which is found concentrated in the focal adhesions that form between cells growing in the presence of extracellular matrix constituents. The encoded protein is a member of the FAK subfamily of protein tyrosine kinases but lacks significant sequence similarity to kinases from other subfamilies. Activation of this gene may be an important early step in cell growth and intracellular signal transduction pathways triggered in response to certain neural peptides or to cell interactions with the extracellular matrix. Several transcript variants encoding different isoforms have been found for this gene.



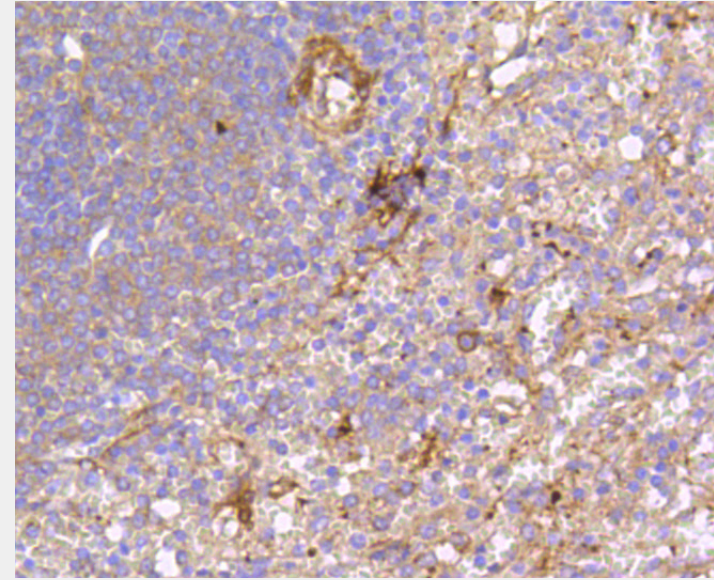
Western blot analysis of extracts of various cell lines, using PTK2 antibody.
Secondary antibody: HRP Goat Anti-Rabbit IgG (H+L) at 1:10000 dilution.
Lysates/proteins: 25ug per lane. Blocking buffer: 3% nonfat dry milk in TBST.



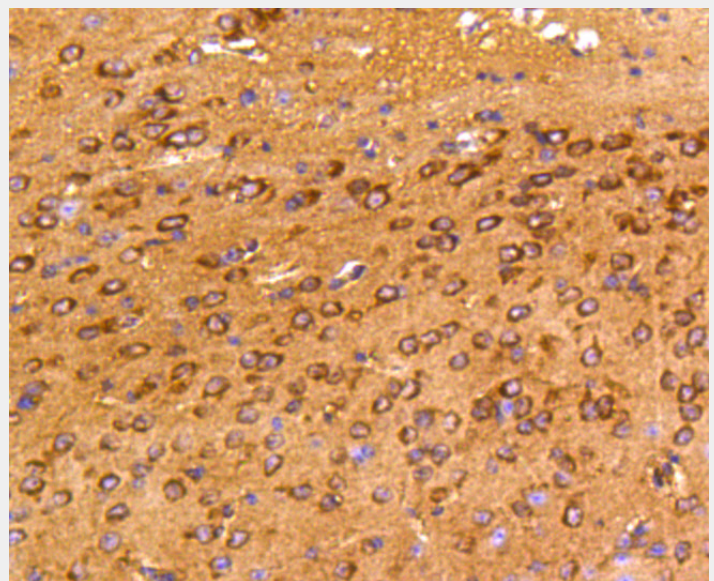
Immunohistochemistry of paraffin-embedded mouse spleen using PTK2 antibody at dilution of 1:100 (40x lens).



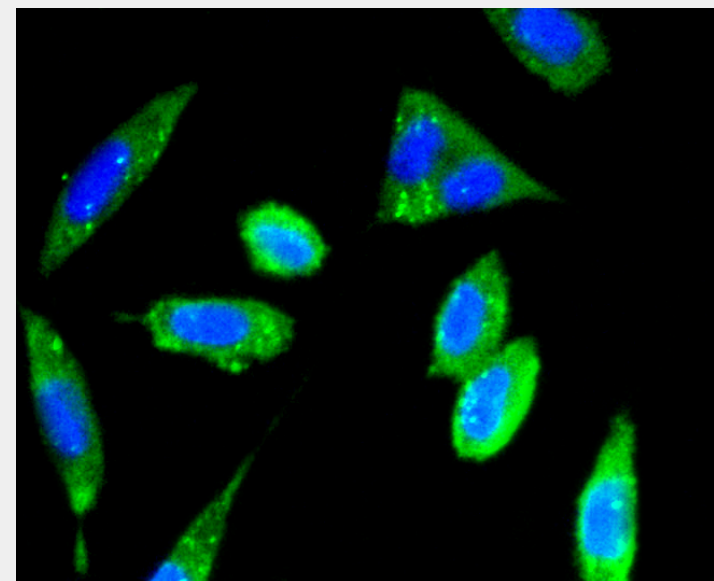
Immunohistochemistry of paraffin-embedded human liver cancer using PTK2 antibody at dilution of 1:100 (40x lens).



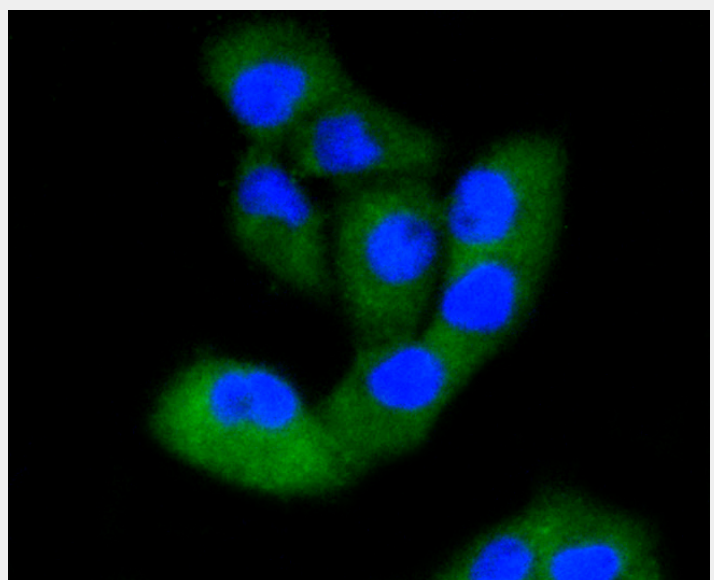
Immunohistochemistry of paraffin-embedded human spleen using PTK2 antibody at dilution of 1:100 (40x lens).



Immunohistochemistry of paraffin-embedded mouse brain using PTK2 antibody at dilution of 1:100 (40x lens).



Immunofluorescence analysis of SH-SY-5Y cells using PTK2 antibody.



Immunofluorescence analysis of PANC-1 cells using PTK2 antibody.

All products are for RESEARCH USE ONLY. Not for diagnostic & therapeutic purposes!