

# Anti NOTCH1 Antibody

Catalog No: tcsa15205



## Available Sizes

---

**Size:** 100µl



## Specifications

---

**Application:**

WB, IHC, IF

**Species Reactivity:**

Human, Mouse

**Host Species:**

Rabbit

**Immunogen / Amino acids:**

Recombinant protein of human NOTCH1

**Conjugation:**

Unconjugated

**Clonality:**

Monoclonal

**Isotype:**

IgG

**Form:**

Liquid

**Storage Buffer:**

PBS with 0.02% sodium azide, 50% glycerol, pH7.3.

**Recommended Dilution:**

WB 1:500 - 1:3000

IHC 1:50 - 1:200

IF 1:100 - 1:500

**Storage Instruction:**

Store at -20C. Avoid freeze / thaw cycles.

**Alternative Names:**

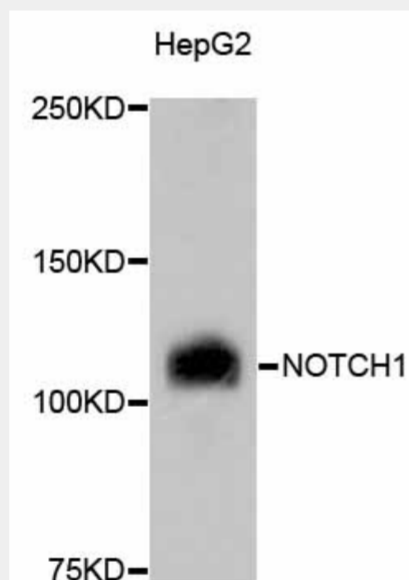
NOTCH1 antibody; Neurogenic locus notch homolog protein 1 antibody; Notch 1 antibody; hN1 antibody; Translocation-associated notch protein TAN-1 antibody; NOTCH1 antibody; TAN1 antibody

**SwissProt:**

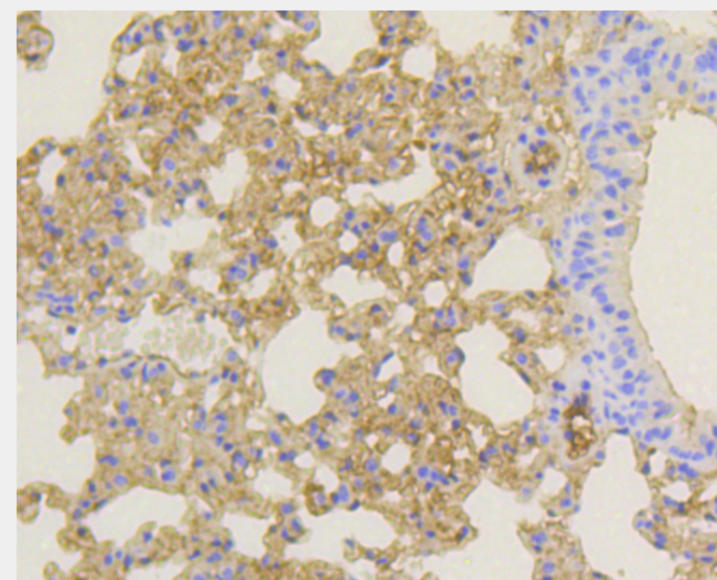
P46531

**Product Description**

This gene encodes a member of the NOTCH family of proteins. Members of this Type I transmembrane protein family share structural characteristics including an extracellular domain consisting of multiple epidermal growth factor-like (EGF) repeats, and an intracellular domain consisting of multiple different domain types. Notch signaling is an evolutionarily conserved intercellular signaling pathway that regulates interactions between physically adjacent cells through binding of Notch family receptors to their cognate ligands. The encoded preproprotein is proteolytically processed in the trans-Golgi network to generate two polypeptide chains that heterodimerize to form the mature cell-surface receptor. This receptor plays a role in the development of numerous cell and tissue types. Mutations in this gene are associated with aortic valve disease, Adams-Oliver syndrome, T-cell acute lymphoblastic leukemia, chronic lymphocytic leukemia, and head and neck squamous cell carcinoma.

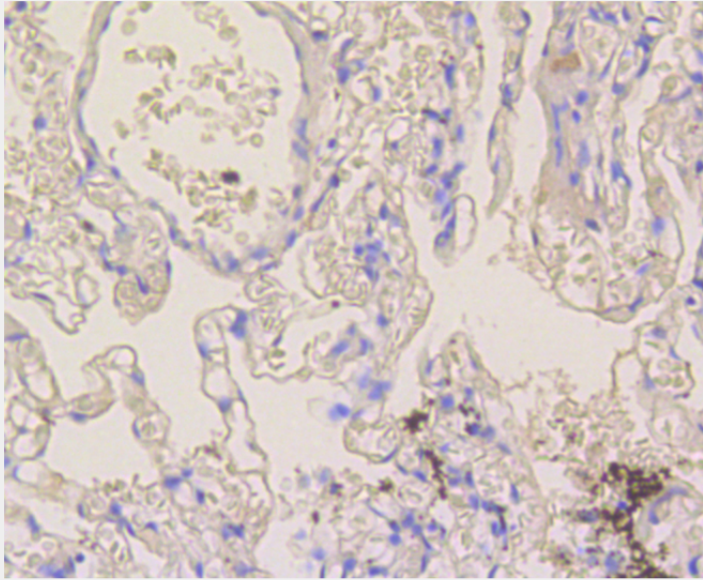


Western blot analysis of extracts of HepG2 cells, using NOTCH1 antibody. Secondary antibody: HRP Goat Anti-Rabbit IgG (H+L) at 1:10000 dilution. Lysates/proteins: 25ug per lane. Blocking buffer: 3% nonfat dry milk in TBST.

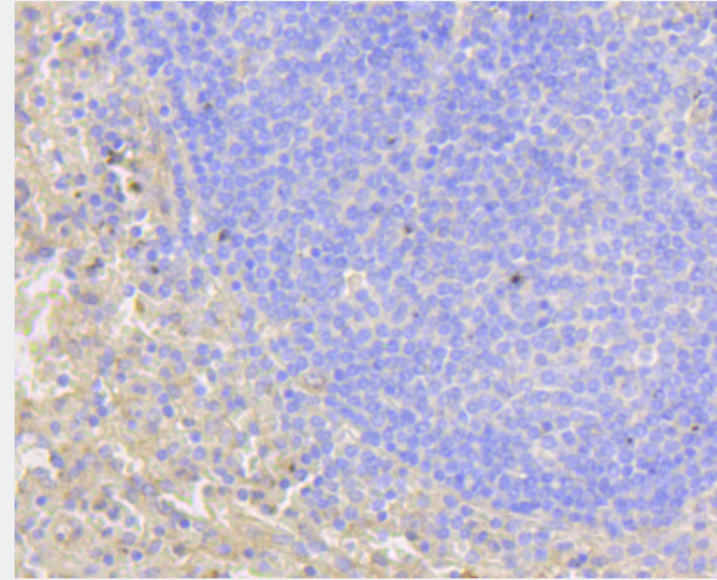


Immunohistochemistry of paraffin-embedded mouse lung using NOTCH1 antibody at dilution of 1:100 (40x lens).

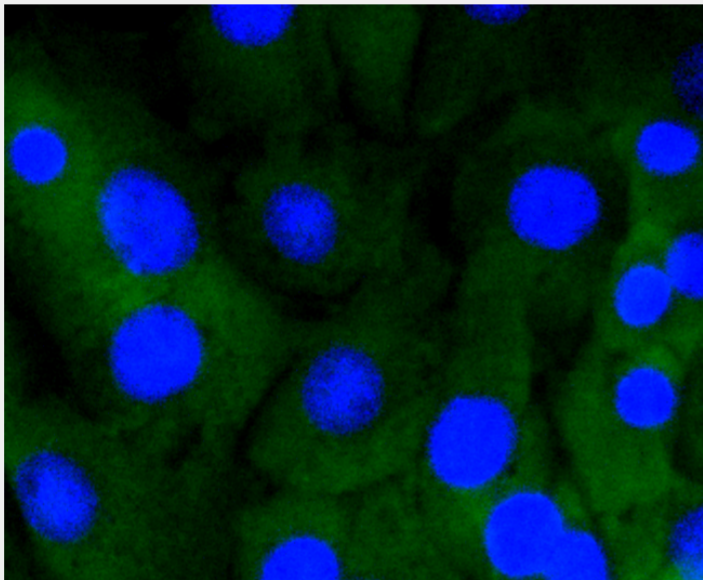




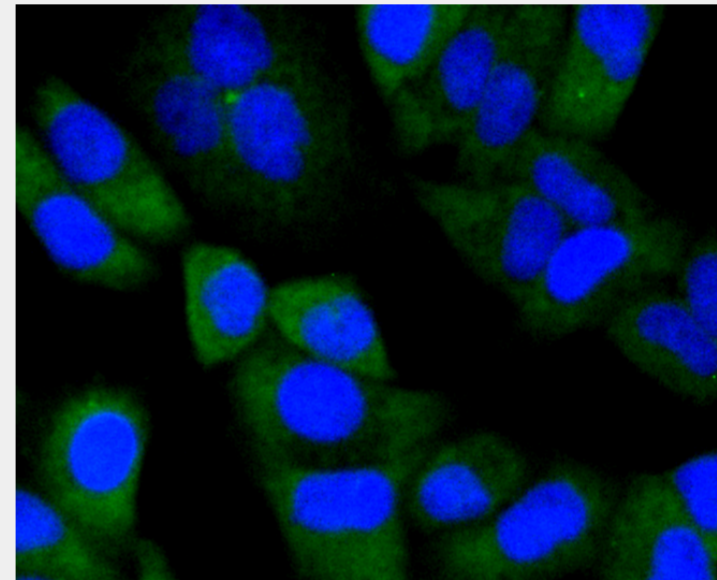
Immunohistochemistry of paraffin-embedded human lung using NOTCH1 antibody at dilution of 1:100 (40x lens).



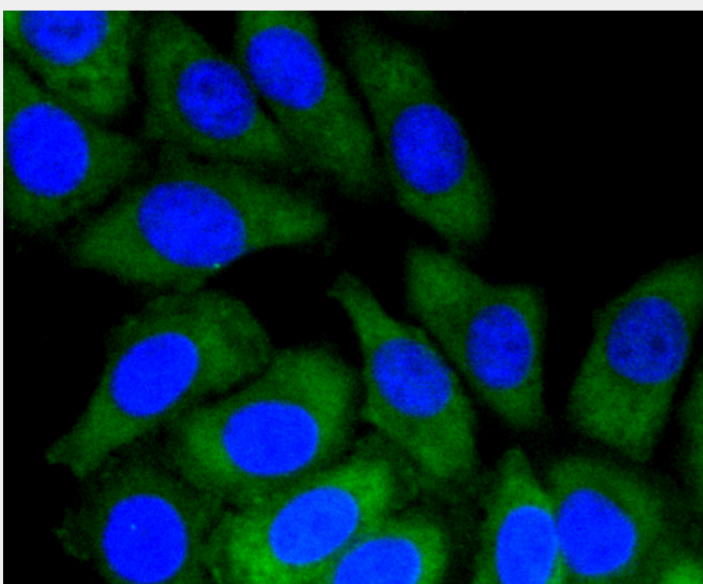
Immunohistochemistry of paraffin-embedded human spleen using NOTCH1 antibody at dilution of 1:100 (40x lens).



Immunofluorescence analysis of NIH-3T3 cells using NOTCH1 antibody.



Immunofluorescence analysis of HeLa cells using NOTCH1 antibody.



Immunofluorescence analysis of HepG2 cells using NOTCH1 antibody.

All products are for RESEARCH USE ONLY. Not for diagnostic & therapeutic purposes!