

Anti MCL1 Antibody

Catalog No: tcsa15184



Available Sizes

Size: 100µl



Specifications

Application:

WB, IHC, IF, IP

Species Reactivity:

Human, Mouse, Rat

Host Species:

Rabbit

Immunogen / Amino acids:

Recombinant protein of human MCL1

Conjugation:

Unconjugated

Clonality:

Monoclonal

Isotype:

IgG

Form:

Liquid

Storage Buffer:

PBS with 0.02% sodium azide, 50% glycerol, pH7.3.

Recommended Dilution:

WB 1:500 - 1:2000

IHC 1:50 - 1:200

IF 1:50 - 1:200

IP 1:20 - 1:50

Storage Instruction:

Store at -20C. Avoid freeze / thaw cycles.

Alternative Names:

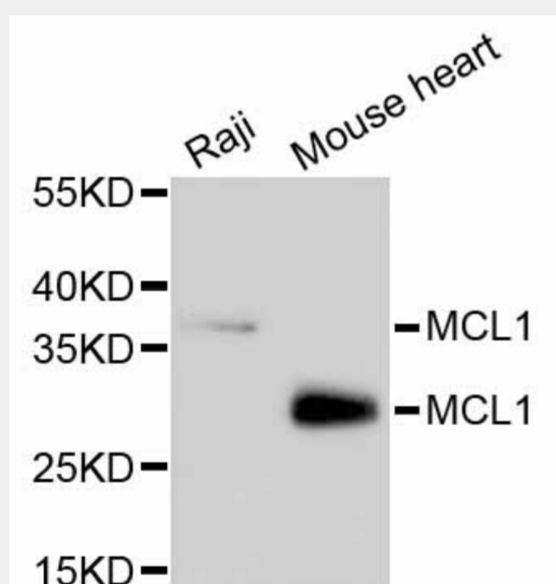
MCL1 antibody; Induced myeloid leukemia cell differentiation protein Mcl-1 antibody; Bcl-2-like protein 3 antibody; Bcl2-L-3 antibody; Bcl-2-related protein EAT/mcl1 antibody; mcl1/EAT antibody; MCL1 antibody; BCL2L3 antibody

SwissProt:

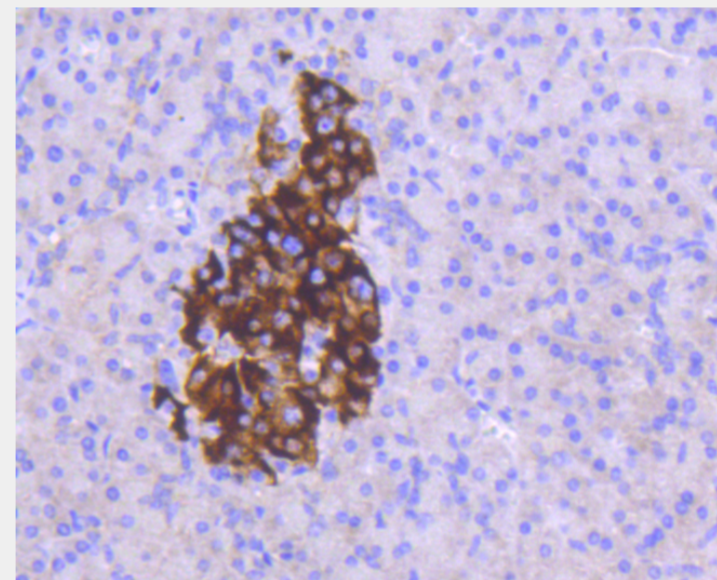
Q07820

Product Description

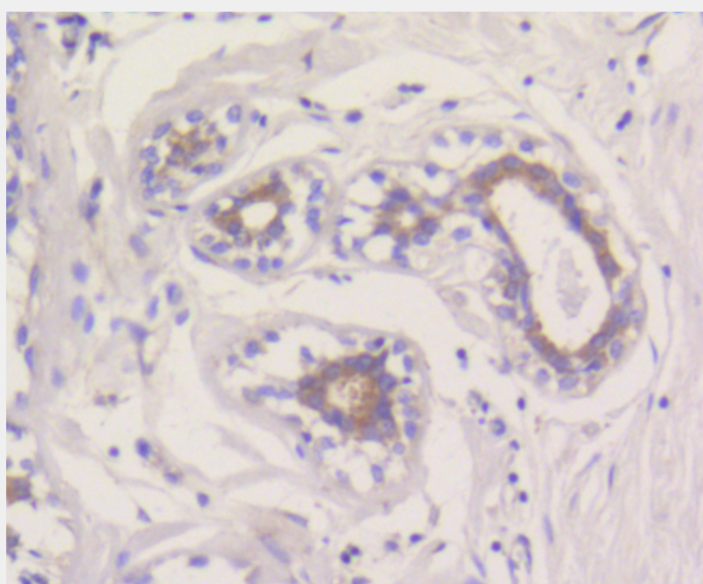
This gene encodes an anti-apoptotic protein, which is a member of the Bcl-2 family. Alternative splicing results in multiple transcript variants. The longest gene product (isoform 1) enhances cell survival by inhibiting apoptosis while the alternatively spliced shorter gene products (isoform 2 and isoform 3) promote apoptosis and are death-inducing.



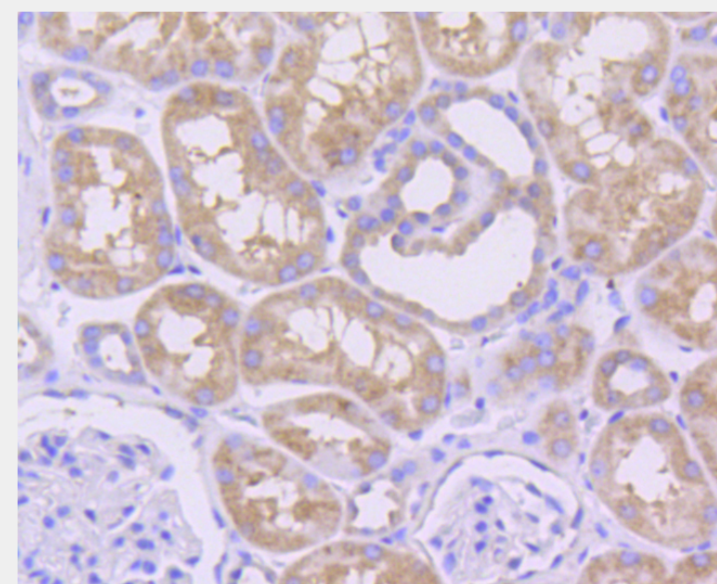
Western blot analysis of extracts of various cell lines, using MCL1 antibody.
Secondary antibody: HRP Goat Anti-Rabbit IgG (H+L) at 1:10000 dilution.
Lysates/proteins: 25ug per lane. Blocking buffer: 3% nonfat dry milk in TBST.



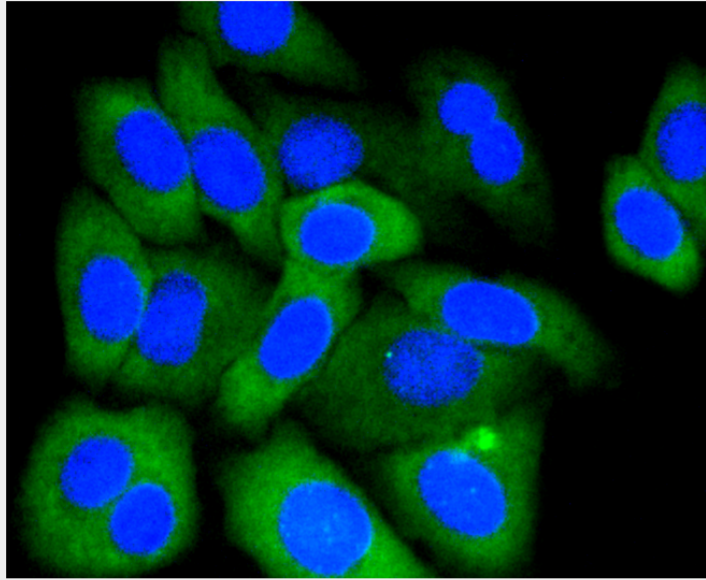
Immunohistochemistry of paraffin-embedded human pancreas using MCL1 antibody at dilution of 1:100 (40x lens).



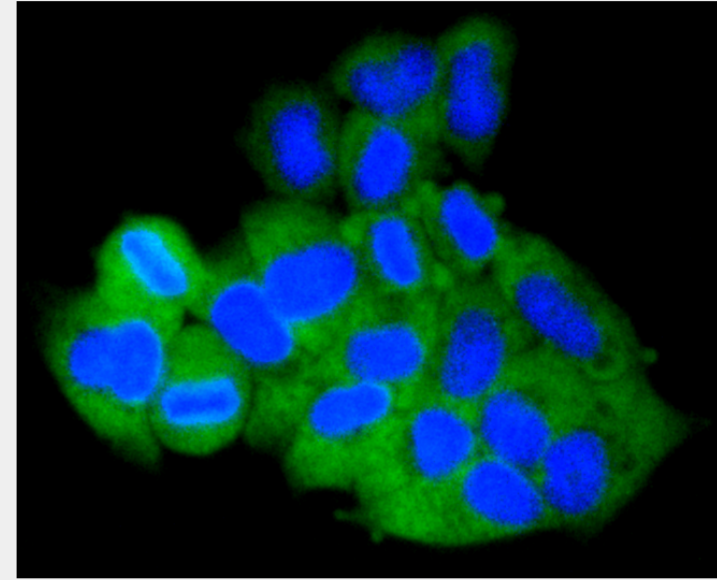
Immunohistochemistry of paraffin-embedded human breast using MCL1 antibody at dilution of 1:100 (40x lens).



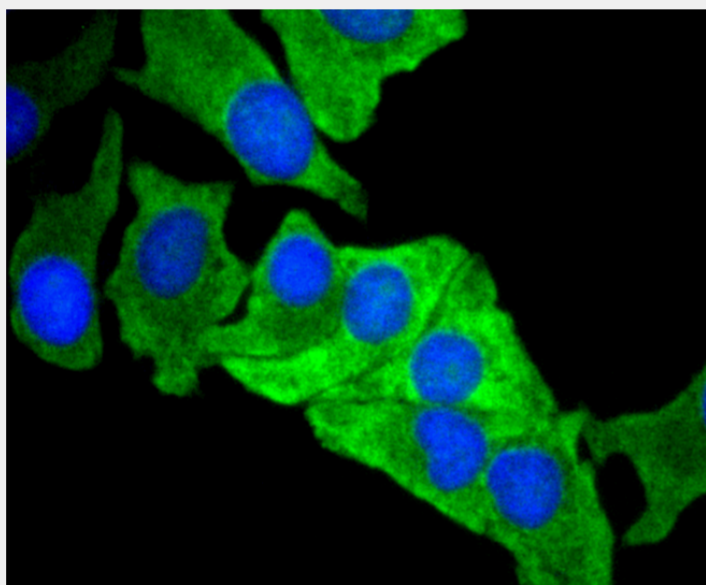
Immunohistochemistry of paraffin-embedded human kidney using MCL1 antibody at dilution of 1:100 (40x lens).



Immunofluorescence analysis of HepG2 cells using MCL1 antibody.



Immunofluorescence analysis of HeLa cells using MCL1 antibody.



Immunofluorescence analysis of BT-20 cells using MCL1 antibody.

All products are for RESEARCH USE ONLY. Not for diagnostic & therapeutic purposes!