

Anti LYZ Antibody

Catalog No: tcsa15177



Available Sizes

Size: 100µl



Specifications

Application:

WB, IHC, IF, IP

Species Reactivity:

Human, Mouse

Host Species:

Rabbit

Immunogen / Amino acids:

Recombinant protein of human LYZ

Conjugation:

Unconjugated

Clonality:

Monoclonal

Isotype:

IgG

Form:

Liquid

Storage Buffer:

PBS with 0.02% sodium azide, 50% glycerol, pH7.3.

Recommended Dilution:

WB 1:5000 - 1:10000

IHC 1:50 - 1:200

IF 1:50 - 1:200

IP 1:20 - 1:50

Storage Instruction:

Store at -20C. Avoid freeze / thaw cycles.

Alternative Names:

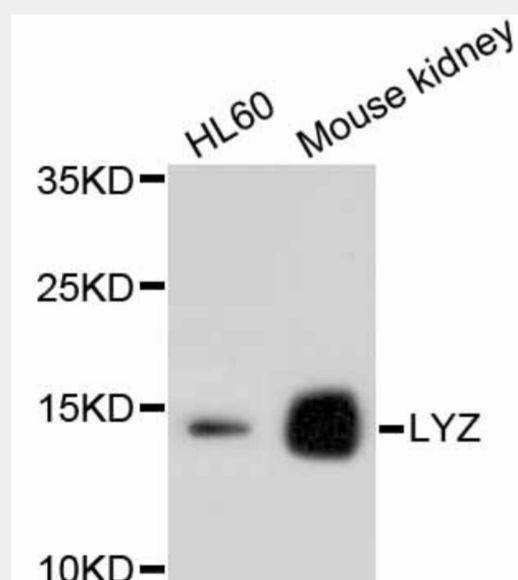
LYZ antibody; Lysozyme C antibody; LYZ antibody; LZM antibody

SwissProt:

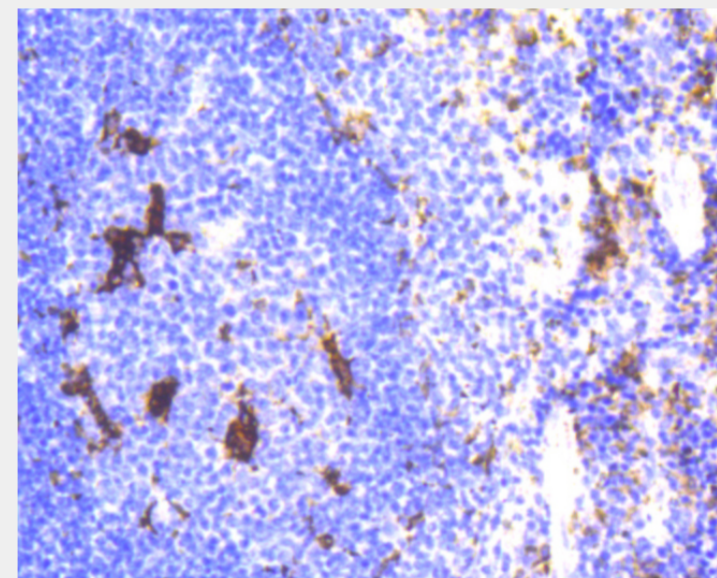
P61626

Product Description

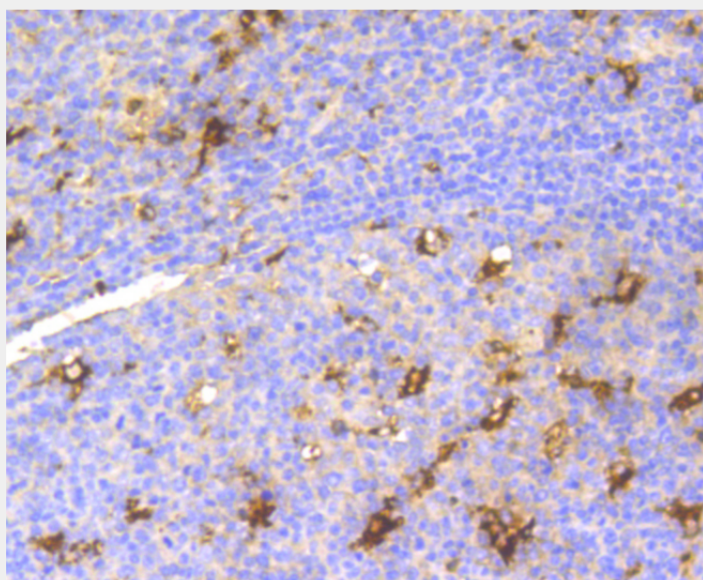
This gene encodes human lysozyme, whose natural substrate is the bacterial cell wall peptidoglycan (cleaving the beta[1-4]glycosidic linkages between N-acetylmuramic acid and N-acetylglucosamine). Lysozyme is one of the antimicrobial agents found in human milk, and is also present in spleen, lung, kidney, white blood cells, plasma, saliva, and tears. The protein has antibacterial activity against a number of bacterial species. Missense mutations in this gene have been identified in heritable renal amyloidosis.



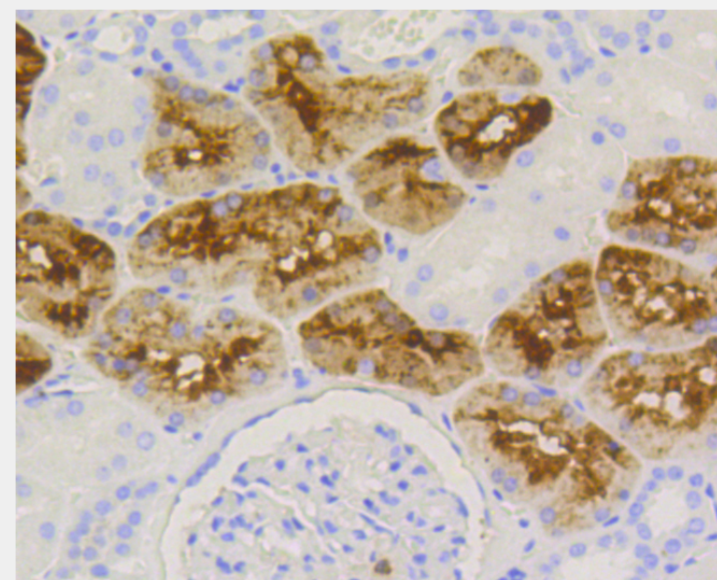
Western blot analysis of extracts of various cell lines, using LYZ antibody. Secondary antibody: HRP Goat Anti-Rabbit IgG (H+L) at 1:10000 dilution. Lysates/proteins: 25ug per lane. Blocking buffer: 3% nonfat dry milk in TBST.



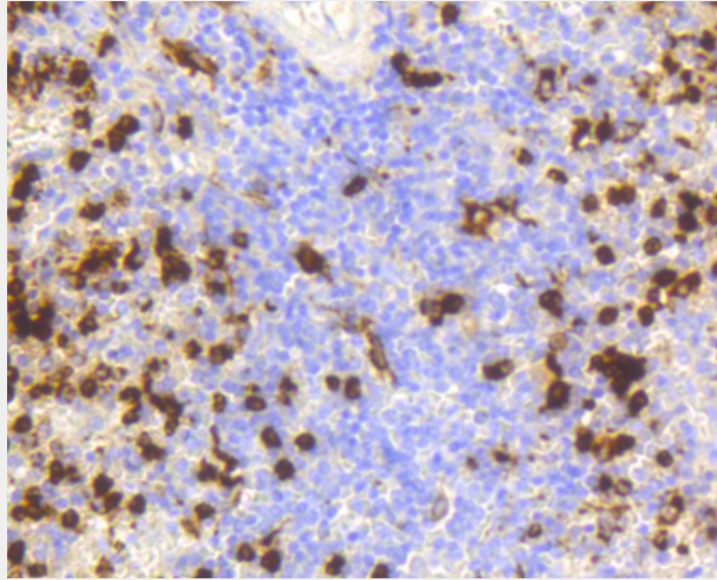
Immunohistochemistry of paraffin-embedded mouse spleen using LYZ antibody at dilution of 1:100 (40x lens).



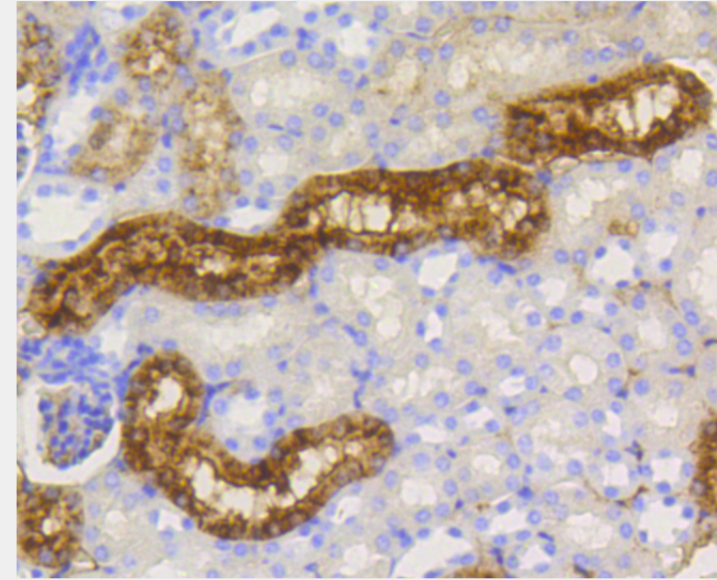
Immunohistochemistry of paraffin-embedded human tonsil using LYZ antibody at dilution of 1:100 (40x lens).



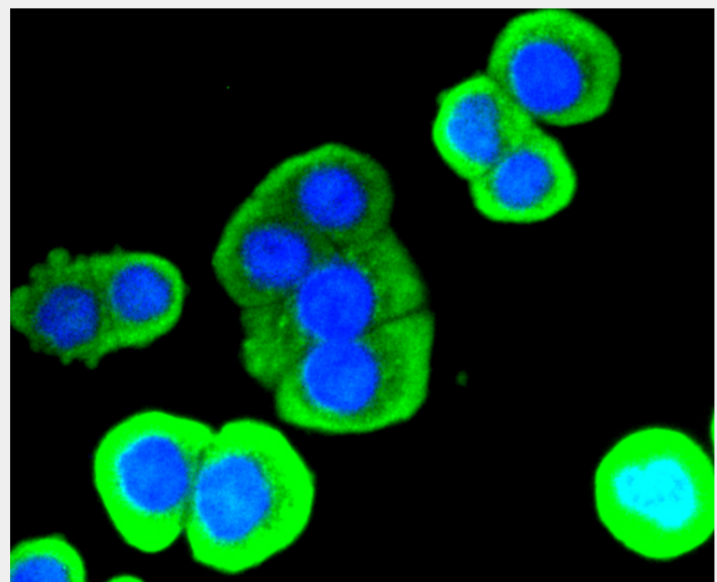
Immunohistochemistry of paraffin-embedded human kidney using LYZ antibody at dilution of 1:100 (40x lens).



Immunohistochemistry of paraffin-embedded human spleen using LYZ antibody at dilution of 1:100 (40x lens).



Immunohistochemistry of paraffin-embedded mouse kidney using LYZ antibody at dilution of 1:100 (40x lens).



Immunofluorescence analysis of CRC cells using LYZ antibody.

All products are for RESEARCH USE ONLY. Not for diagnostic & therapeutic purposes!