

Anti LAMP2 Antibody

Catalog No: tcsa15168



Available Sizes

Size: 100µl



Specifications

Application:

WB, IHC, IP

Species Reactivity:

Human, Mouse, Rat

Host Species:

Rabbit

Immunogen / Amino acids:

Recombinant protein of human LAMP2

Conjugation:

Unconjugated

Clonality:

Monoclonal

Isotype:

IgG

Form:

Liquid

Storage Buffer:

PBS with 0.02% sodium azide, 50% glycerol, pH7.3.

Recommended Dilution:

WB 1:500 - 1:2000

IHC 1:50 - 1:200

IP 1:20 - 1:50

Storage Instruction:

Store at -20C. Avoid freeze / thaw cycles.

Alternative Names:

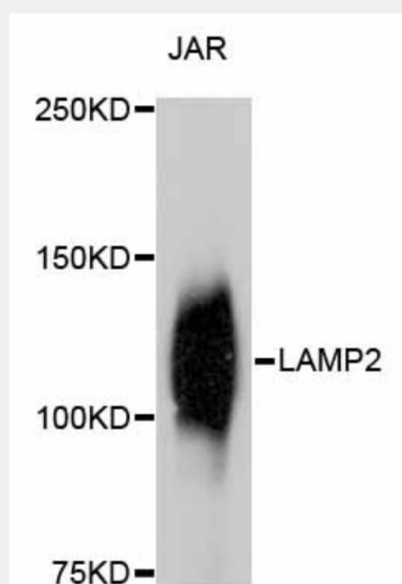
LAMP2 antibody; Lysosome-associated membrane glycoprotein 2 antibody; LAMP-2 antibody; Lysosome-associated membrane protein 2 antibody; CD107 antigen-like family member B antibody; LGP-96 antibody; CD antigen CD107b antibody; LAMP2 an

SwissProt:

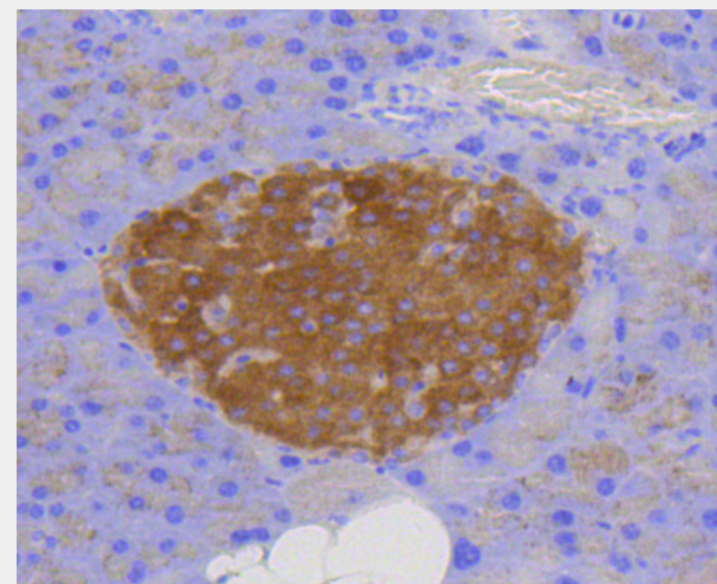
P13473

Product Description

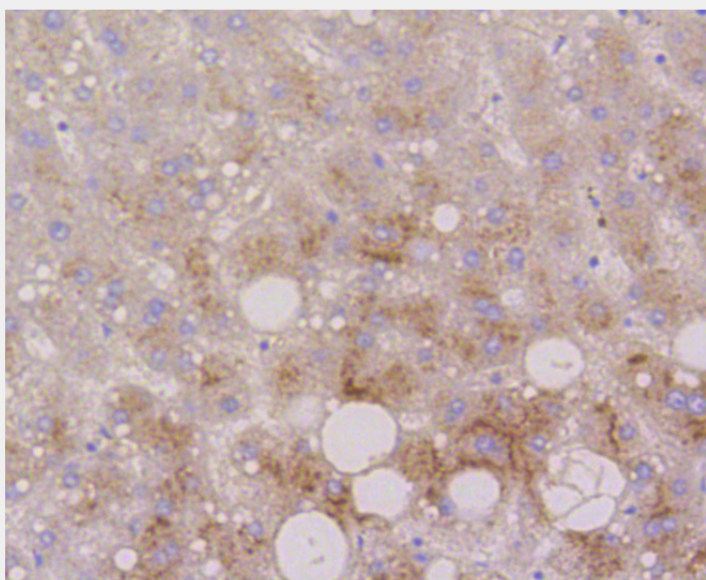
The protein encoded by this gene is a member of a family of membrane glycoproteins. This glycoprotein provides selectins with carbohydrate ligands. It may play a role in tumor cell metastasis. It may also function in the protection, maintenance, and adhesion of the lysosome. Alternative splicing of this gene results in multiple transcript variants encoding distinct proteins.



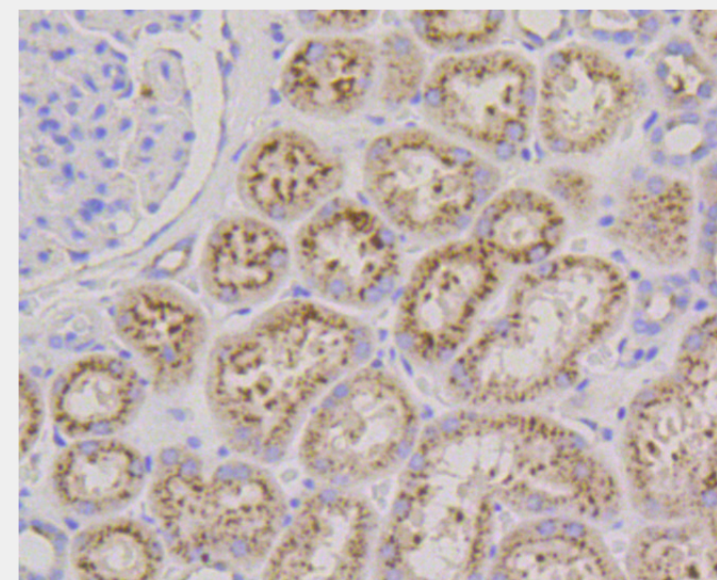
Western blot analysis of extracts of JAR cells, using LAMP2 antibody. Secondary antibody: HRP Goat Anti-Rabbit IgG (H+L) at 1:10000 dilution. Lysates/proteins: 25ug per lane. Blocking buffer: 3% nonfat dry milk in TBST.



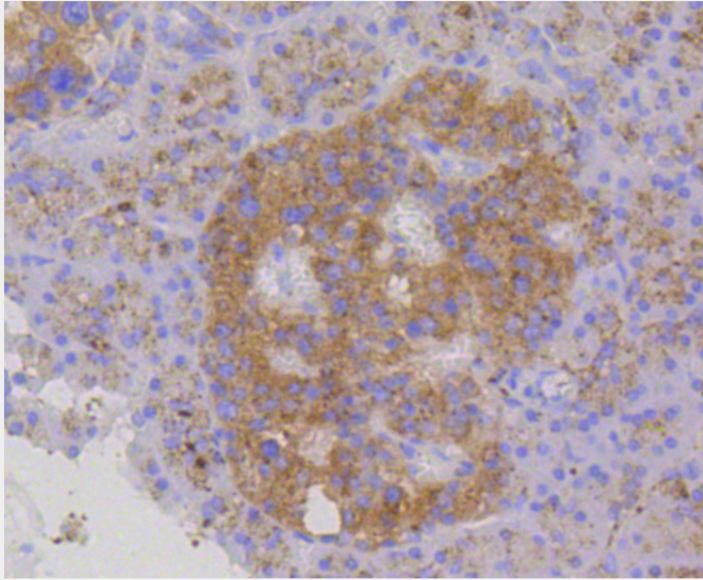
Immunohistochemistry of paraffin-embedded mouse pancreas using LAMP2 antibody at dilution of 1:100 (40x lens).



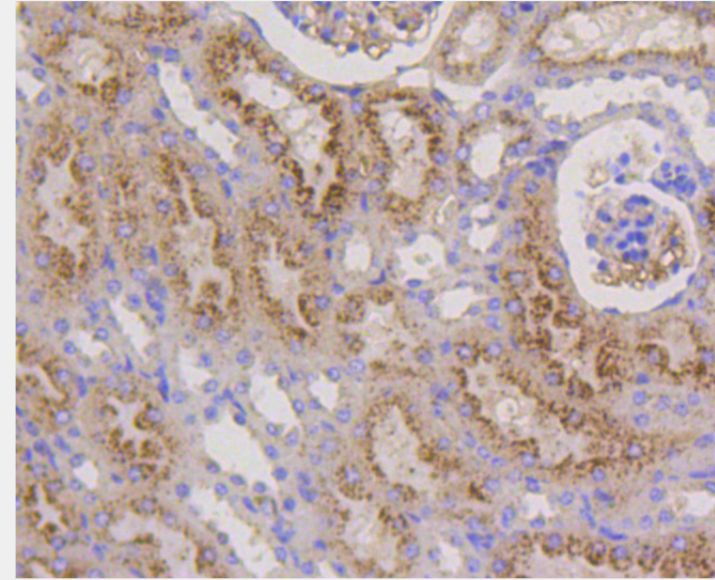
Immunohistochemistry of paraffin-embedded human liver using LAMP2 antibody at dilution of 1:100 (40x lens).



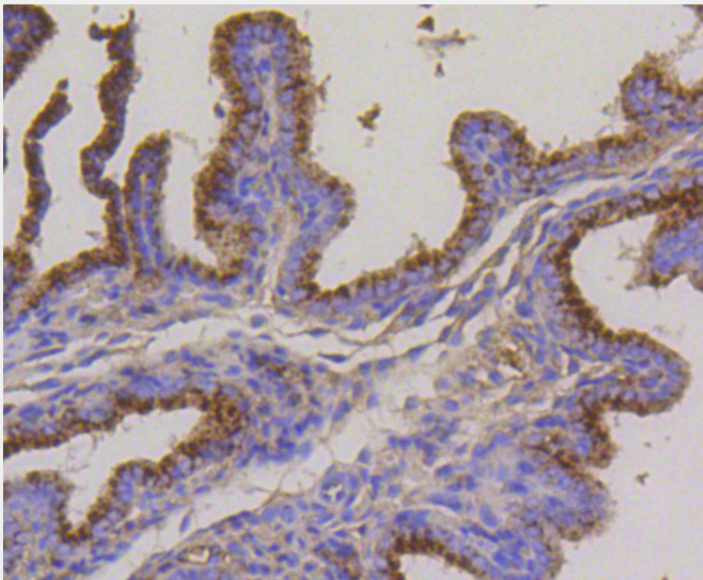
Immunohistochemistry of paraffin-embedded human kidney using LAMP2 antibody at dilution of 1:100 (40x lens).



Immunohistochemistry of paraffin-embedded human pancreas using LAMP2 antibody at dilution of 1:100 (40x lens).



Immunohistochemistry of paraffin-embedded mouse kidney using LAMP2 antibody at dilution of 1:100 (40x lens).



Immunohistochemistry of paraffin-embedded mouse placenta using LAMP2 antibody at dilution of 1:100 (40x lens).

All products are for RESEARCH USE ONLY. Not for diagnostic & therapeutic purposes!