

Anti HK1 Antibody

Catalog No: tcsa15130



Available Sizes

Size: 100µl



Specifications

Application:

WB, IHC, IF

Species Reactivity:

Human, Mouse, Rat

Host Species:

Rabbit

Immunogen / Amino acids:

Recombinant protein of human HK1

Conjugation:

Unconjugated

Clonality:

Monoclonal

Isotype:

IgG

Form:

Liquid

Storage Buffer:

PBS with 0.02% sodium azide, 50% glycerol, pH7.3.

Recommended Dilution:

WB 1:500 - 1:2000

IHC 1:50 - 1:200

IF 1:50 - 1:200

Storage Instruction:

Store at -20C. Avoid freeze / thaw cycles.

Alternative Names:

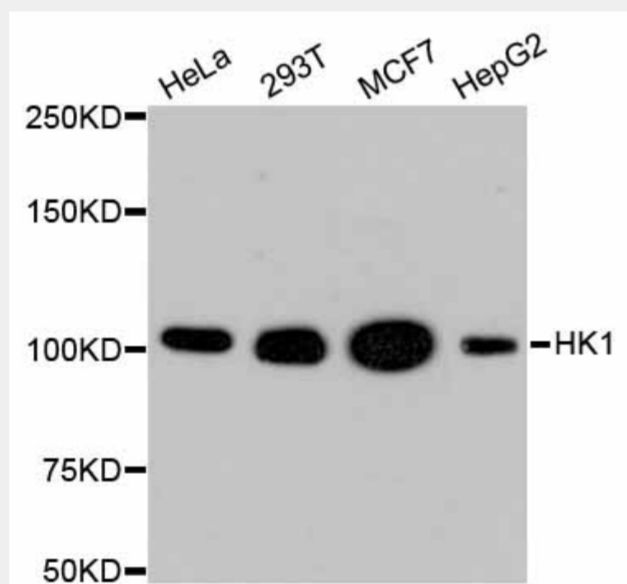
HK1 antibody; Hexokinase-1 antibody; HK1 antibody

SwissProt:

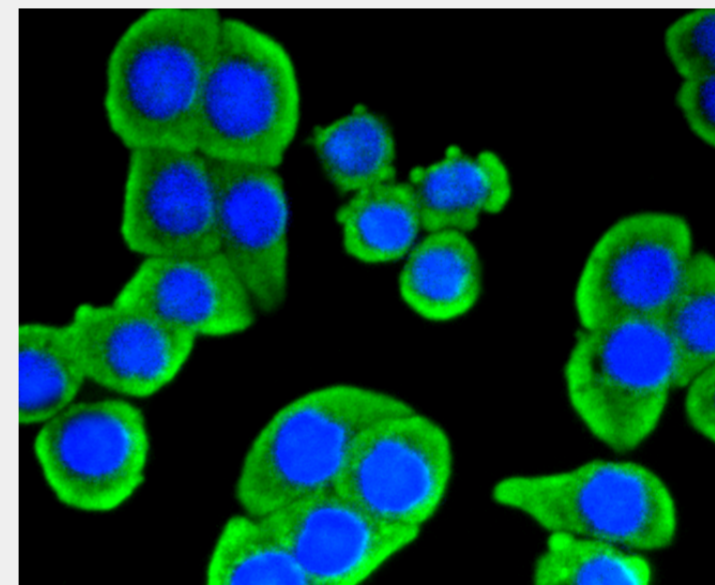
P19367

Product Description

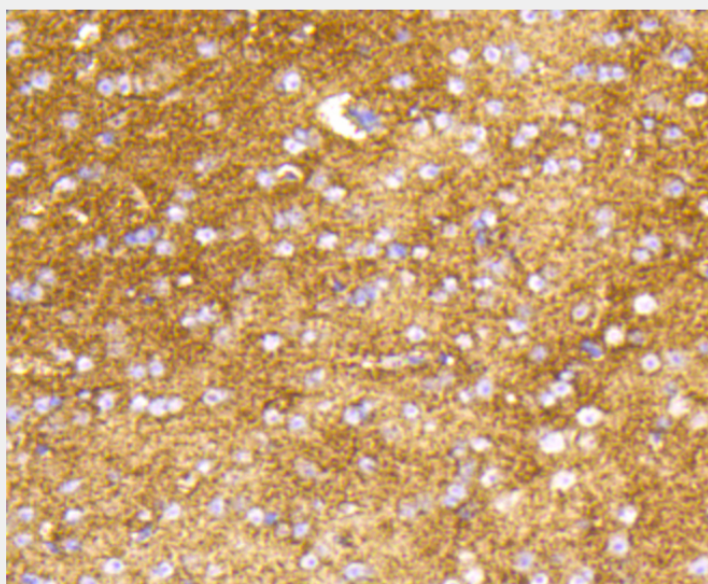
Hexokinases phosphorylate glucose to produce glucose-6-phosphate, the first step in most glucose metabolism pathways. This gene encodes a ubiquitous form of hexokinase which localizes to the outer membrane of mitochondria. Mutations in this gene have been associated with hemolytic anemia due to hexokinase deficiency. Alternative splicing of this gene results in several transcript variants which encode different isoforms, some of which are tissue-specific.



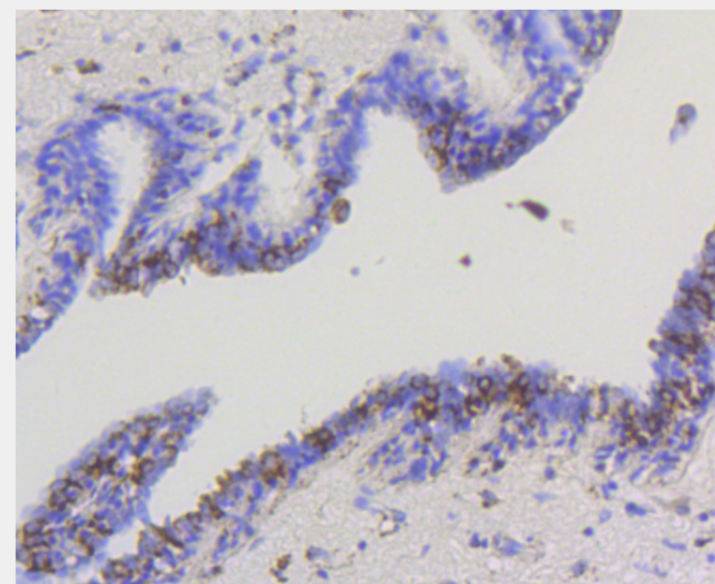
Western blot analysis of extracts of various cell lines, using HK1 antibody.
Secondary antibody: HRP Goat Anti-Rabbit IgG (H+L) at 1:10000 dilution.
Lysates/proteins: 25ug per lane. Blocking buffer: 3% nonfat dry milk in TBST.



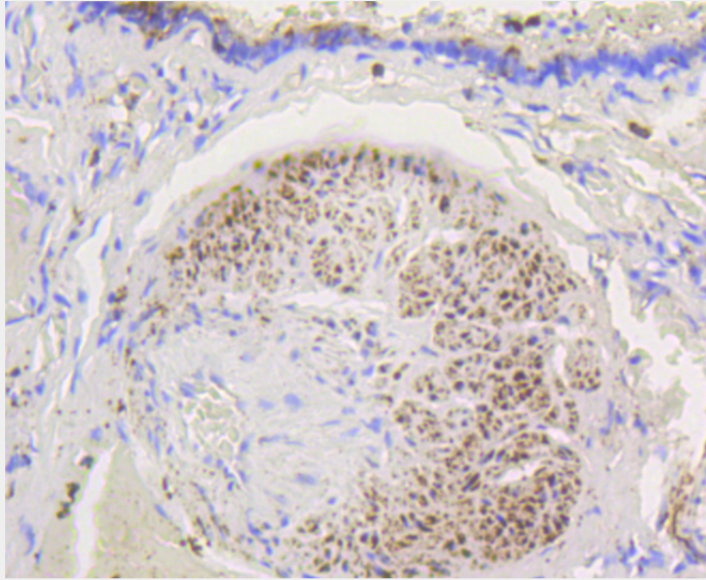
Immunofluorescence analysis of CRC cells using HK1 antibody.



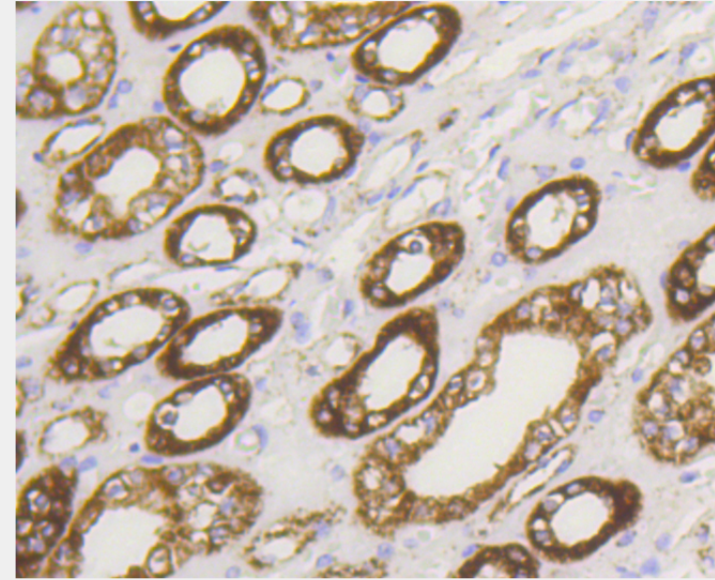
Immunohistochemistry of paraffin-embedded mouse brain using HK1 antibody at dilution of 1:100 (40x lens).



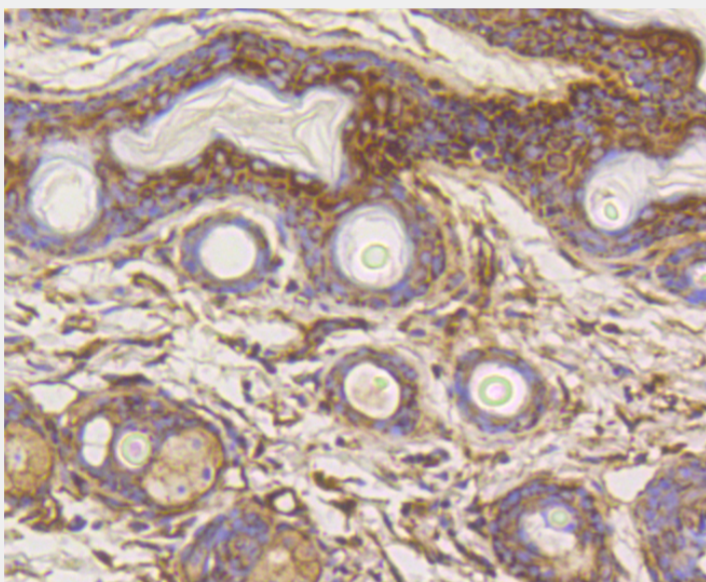
Immunohistochemistry of paraffin-embedded human mammary cancer using HK1 antibody at dilution of 1:100 (40x lens).



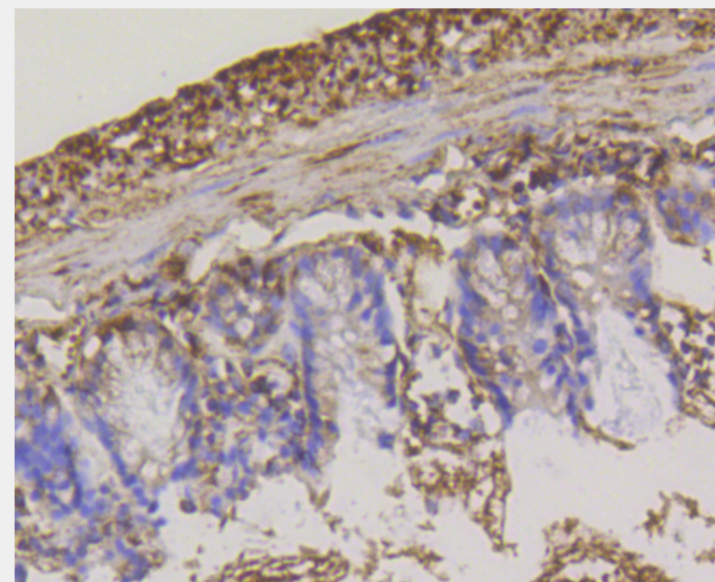
Immunohistochemistry of paraffin-embedded human lung using HK1 antibody at dilution of 1:100 (40x lens).



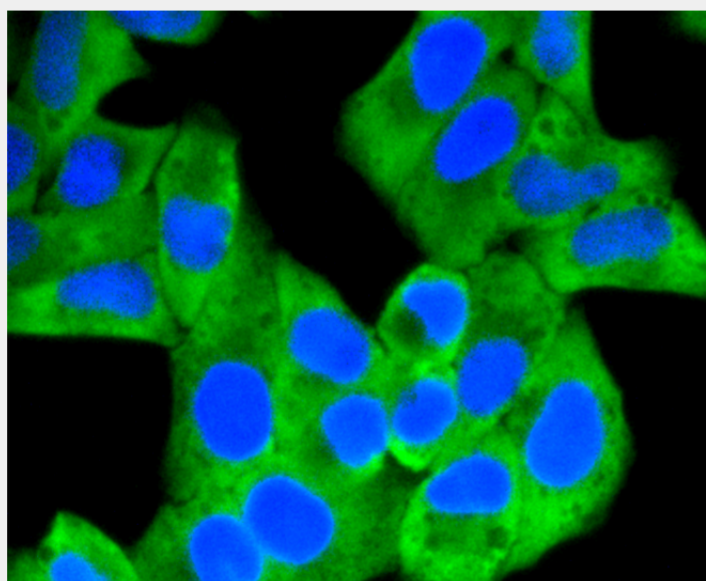
Immunohistochemistry of paraffin-embedded human kidney using HK1 antibody at dilution of 1:100 (40x lens).



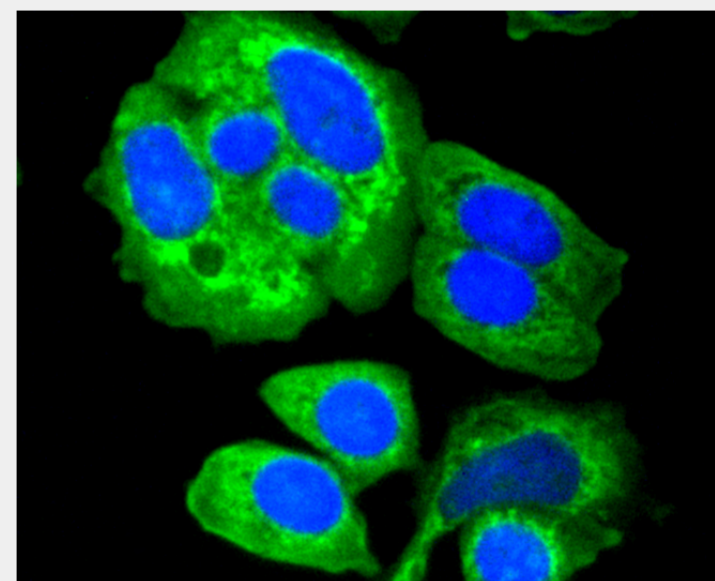
Immunohistochemistry of paraffin-embedded mouse skin using HK1 antibody at dilution of 1:100 (40x lens).



Immunohistochemistry of paraffin-embedded mouse colon using HK1 antibody at dilution of 1:100 (40x lens).



Immunofluorescence analysis of HeLa cells using HK1 antibody.



Immunofluorescence analysis of MCF-7 cells using HK1 antibody.

All products are for RESEARCH USE ONLY. Not for diagnostic & therapeutic purposes!