

Anti H3F3A Antibody

Catalog No: tcsa15127



Available Sizes

Size: 100μl



Specifications

Application:

WB, IHC, IF

Species Reactivity:

Human, Mouse, Rat

Host Species:

Rabbit

Immunogen / Amino acids:

Recombinant protein of human H3F3A

Conjugation:

Unconjugated

Isotype:

IgG

Form:

Liquid

Storage Buffer:

PBS with 0.02% sodium azide, 50% glycerol, pH7.3.

Recommended Dilution:

WB 1:500 - 1:1000

IHC 1:500 - 1:1000

IF 1:100 - 1:500

Storage Instruction:

Store at -20C. Avoid freeze / thaw cycles.

Alternative Names:

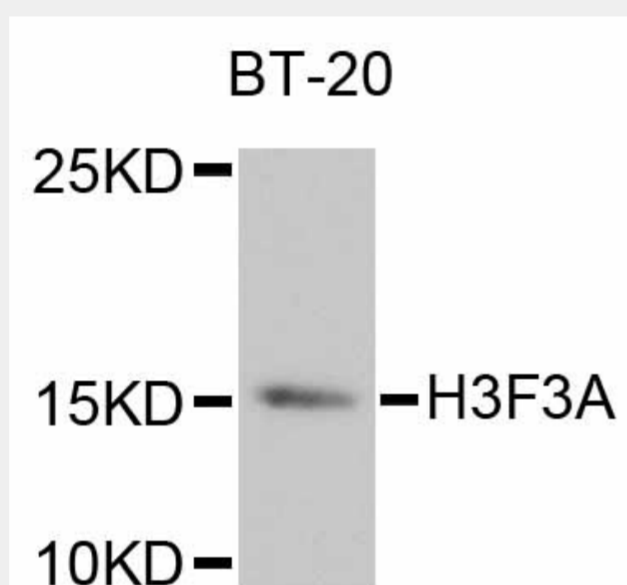
H3F3A antibody; Histone H3.3 antibody; H3F3A antibody; H3.3A antibody; H3F3 antibody; PP781; antibody; H3F3B antibody; H3.3B antibody

SwissProt:

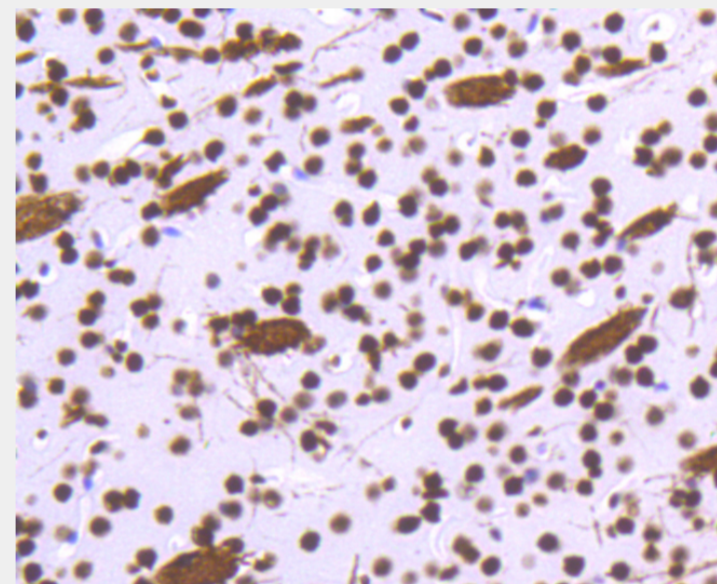
P84243

Product Description

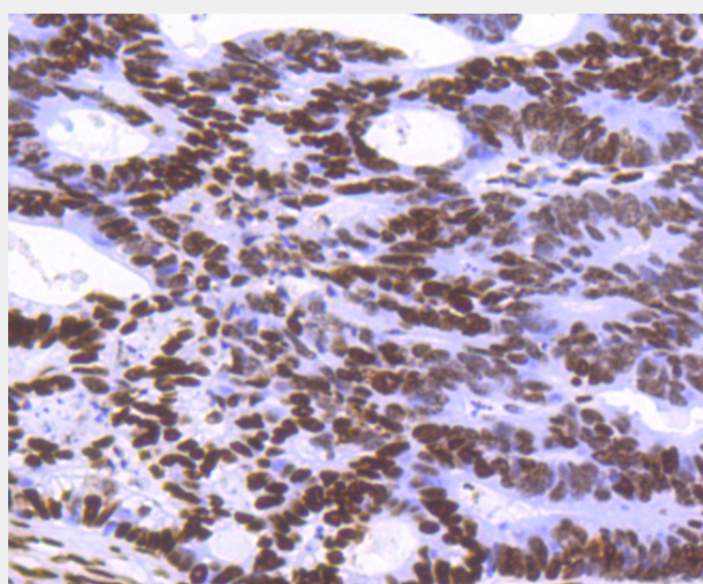
Histones are basic nuclear proteins that are responsible for the nucleosome structure of the chromosomal fiber in eukaryotes. Two molecules of each of the four core histones (H2A, H2B, H3, and H4) form an octamer, around which approximately 146 bp of DNA is wrapped in repeating units, called nucleosomes. The linker histone, H1, interacts with linker DNA between nucleosomes and functions in the compaction of chromatin into higher order structures. This gene contains introns and its mRNA is polyadenylated, unlike most histone genes. The protein encoded is a replication-independent member of the histone H3 family.



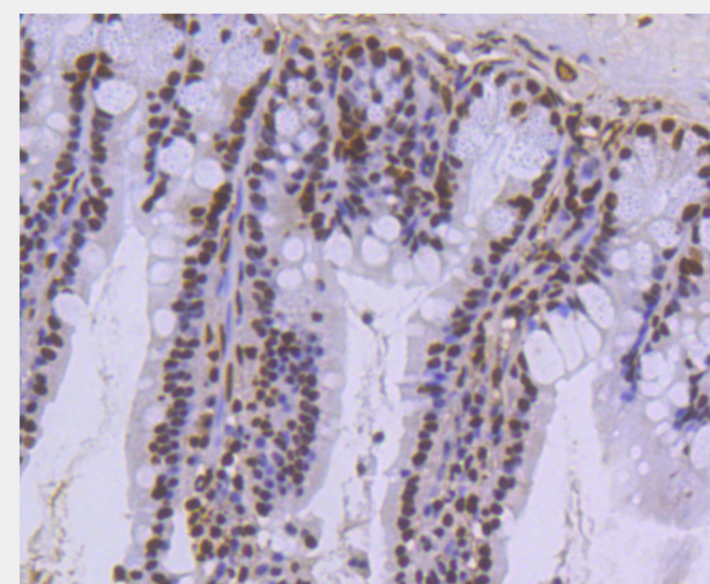
Western blot analysis of extracts of BT-20 cells, using H3F3A antibody. Secondary antibody: HRP Goat Anti-Rabbit IgG (H+L) at 1:10000 dilution. Lysates/proteins: 25ug per lane. Blocking buffer: 3% nonfat dry milk in TBST.



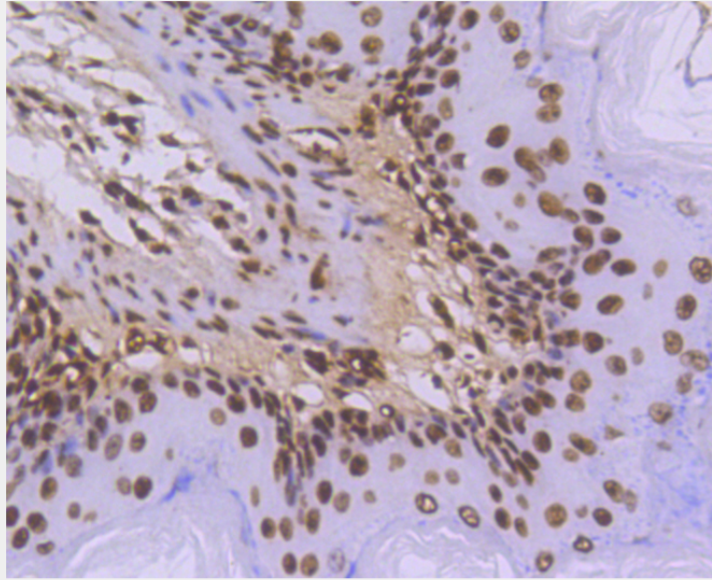
Immunohistochemistry of paraffin-embedded mouse brain using H3F3A antibody at dilution of 1:100 (40x lens).



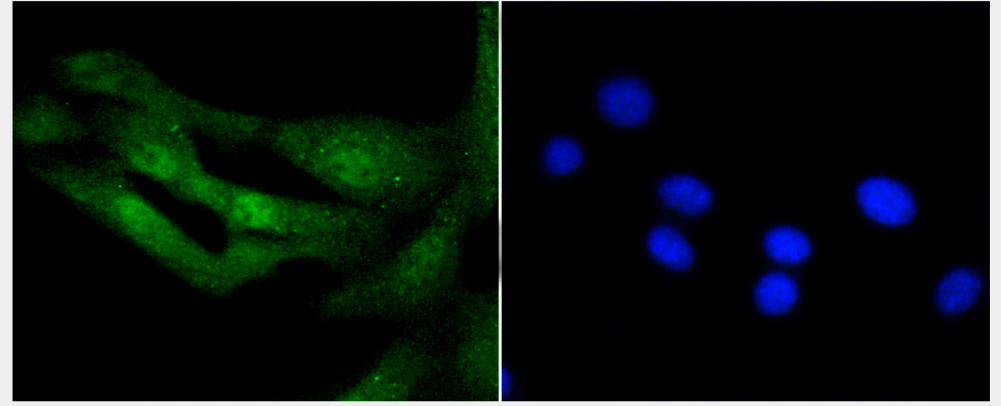
Immunohistochemistry of paraffin-embedded human colon carcinoma using H3F3A antibody at dilution of 1:100 (40x lens).



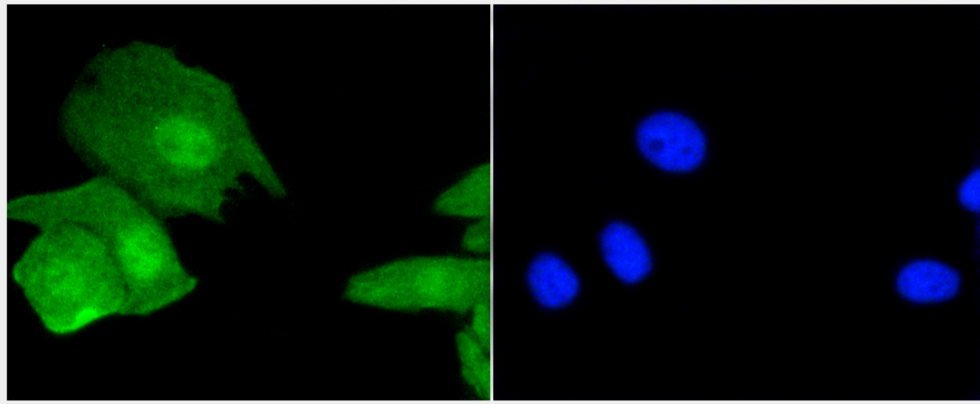
Immunohistochemistry of paraffin-embedded mouse colon using H3F3A antibody at dilution of 1:100 (40x lens).



Immunohistochemistry of paraffin-embedded mouse stomach using H3F3A antibody at dilution of 1:100 (40x lens).



Immunofluorescence analysis of NIH-3T3 cells using H3F3A antibody.



Immunofluorescence analysis of BT-20 cells using H3F3A antibody.

All products are for RESEARCH USE ONLY. Not for diagnostic & therapeutic purposes!