

Anti CNN1 Antibody

Catalog No: tcsa15089



Available Sizes

Size: 100µl



Specifications

Application:

WB, IHC, IF

Species Reactivity:

Human, Mouse, Rat, Dog, Pig

Host Species:

Rabbit

Immunogen / Amino acids:

Recombinant protein of human CNN1

Conjugation:

Unconjugated

Clonality:

Monoclonal

Isotype:

IgG

Form:

Liquid

Storage Buffer:

PBS with 0.02% sodium azide, 50% glycerol, pH7.3.

Recommended Dilution:

WB 1:500 - 1:2000

IHC 1:50 - 1:200

IF 1:50 - 1:200

Storage Instruction:

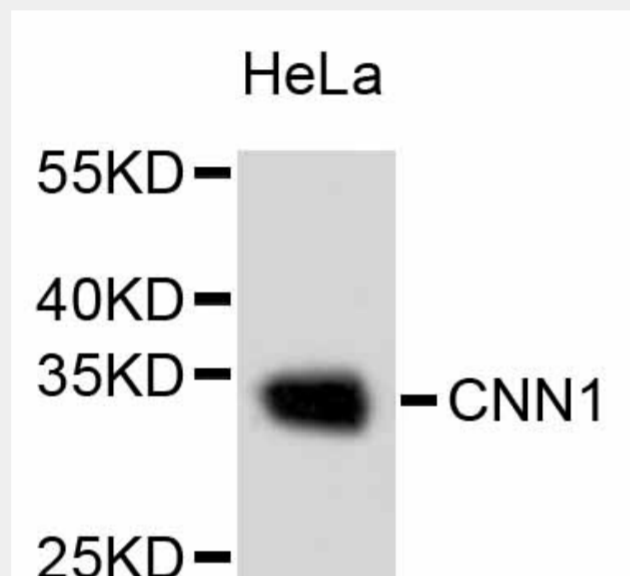
Store at -20C. Avoid freeze / thaw cycles.

Alternative Names:

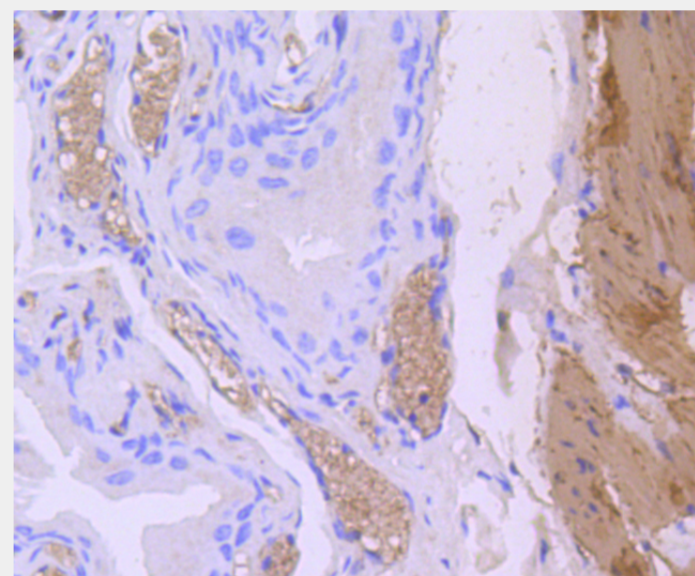
CNN1 antibody; Calponin-1 antibody; Basic calponin antibody; Calponin H1 antibody; smooth muscle antibody; CNN1 antibody

SwissProt:

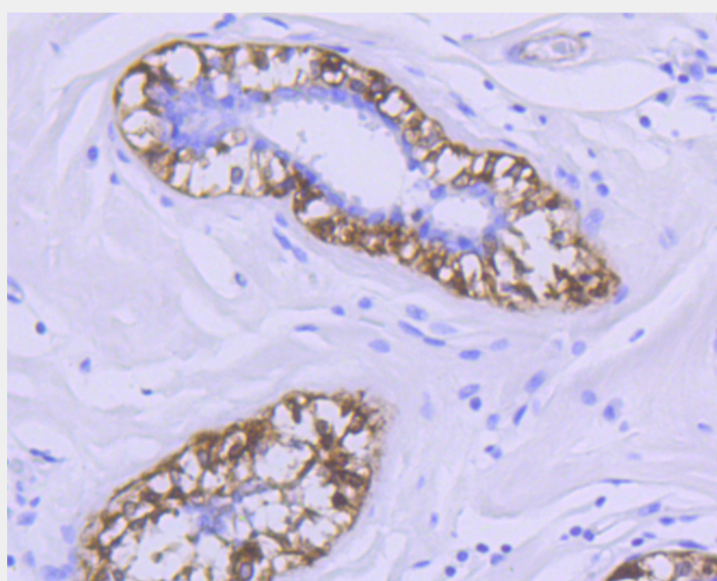
P51911



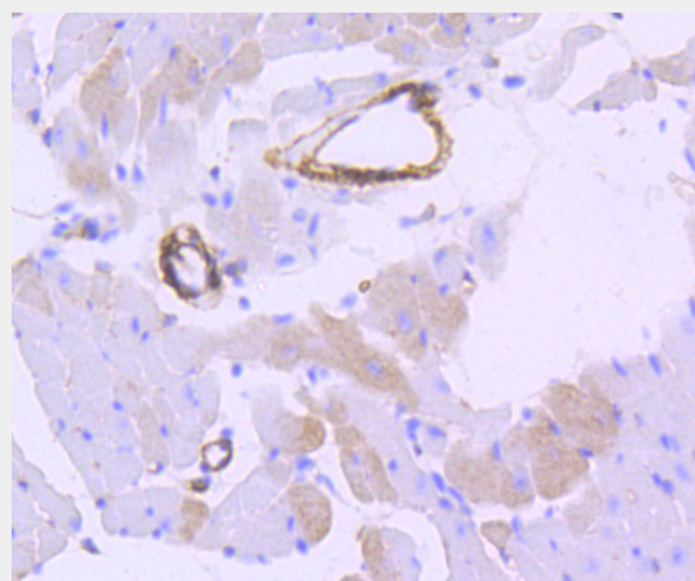
Western blot analysis of extracts of HeLa cells, using CNN1 antibody. Secondary antibody: HRP Goat Anti-Rabbit IgG (H+L) at 1:10000 dilution. Lysates/proteins: 25ug per lane. Blocking buffer: 3% nonfat dry milk in TBST.



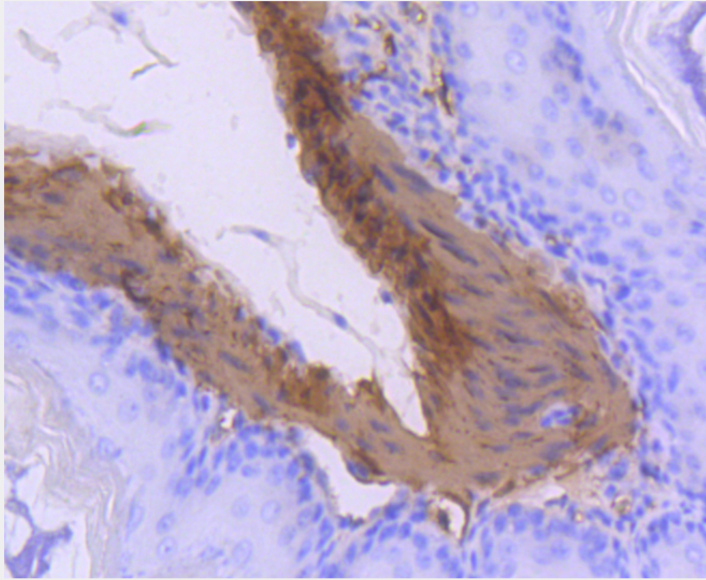
Immunohistochemistry of paraffin-embedded mouse bladder using CNN1 antibody at dilution of 1:100 (40x lens).



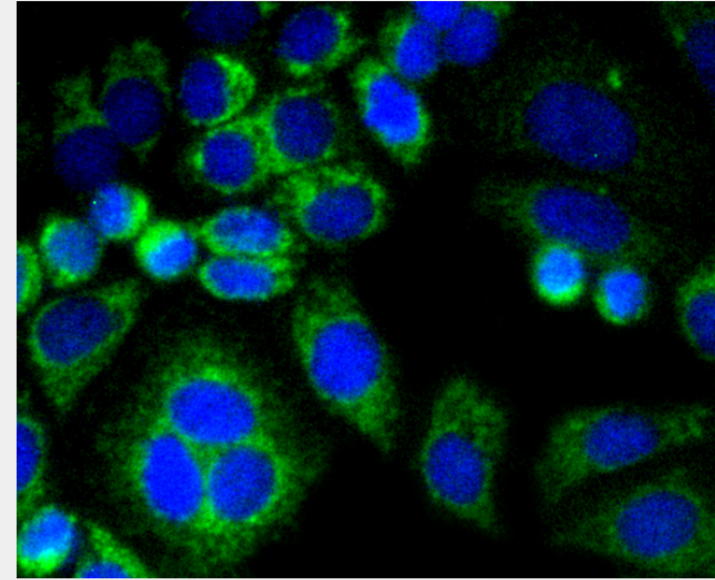
Immunohistochemistry of paraffin-embedded human breast using CNN1 antibody at dilution of 1:100 (40x lens).



Immunohistochemistry of paraffin-embedded mouse heart using CNN1 antibody at dilution of 1:100 (40x lens).



Immunohistochemistry of paraffin-embedded mouse stomach using CNN1 antibody at dilution of 1:100 (40x lens).



Immunofluorescence analysis of HepG2 cells using CNN1 antibody.

All products are for RESEARCH USE ONLY. Not for diagnostic & therapeutic purposes!