

Anti CAV1 Antibody

Catalog No: tcsa15060



Available Sizes

Size: 100μl



Specifications

Application:

WB, IHC, IF

Species Reactivity:

Human, Mouse

Host Species:

Rabbit

Immunogen / Amino acids:

Recombinant protein of human CAV1

Conjugation:

Unconjugated

Clonality:

Monoclonal

Isotype:

IgG

Form:

Liquid

Storage Buffer:

PBS with 0.02% sodium azide, 50% glycerol, pH7.3.

Recommended Dilution:

WB 1:500 - 1:2000

IHC 1:50 - 1:200

IF 1:50 - 1:200

Storage Instruction:

Store at -20C. Avoid freeze / thaw cycles.

Alternative Names:

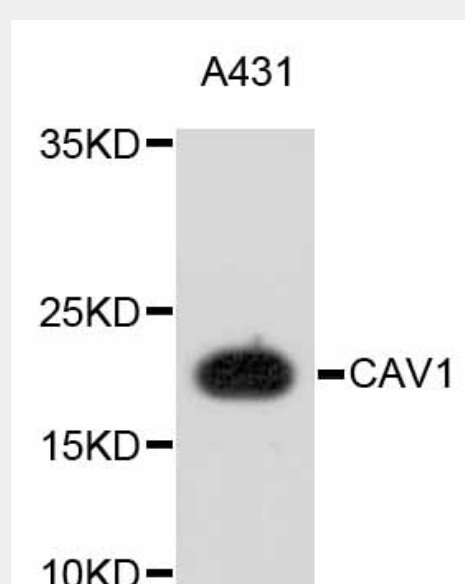
CAV1 antibody; Caveolin-1 antibody; CAV1 antibody; CAV antibody

SwissProt:

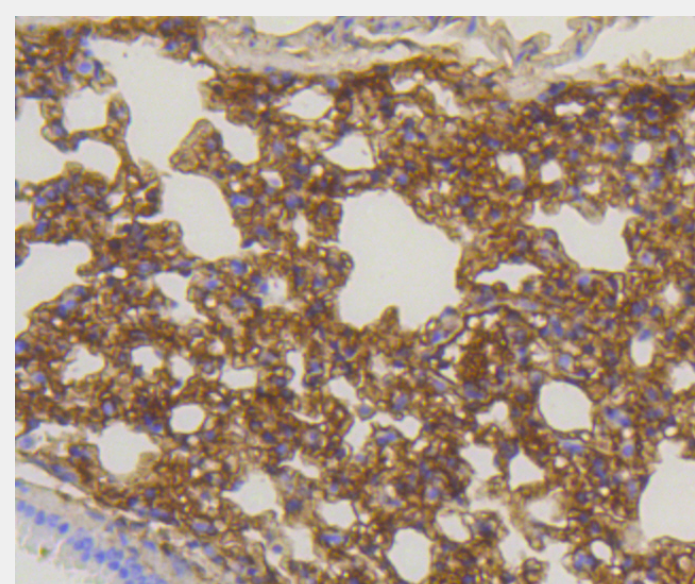
Q03135

Product Description

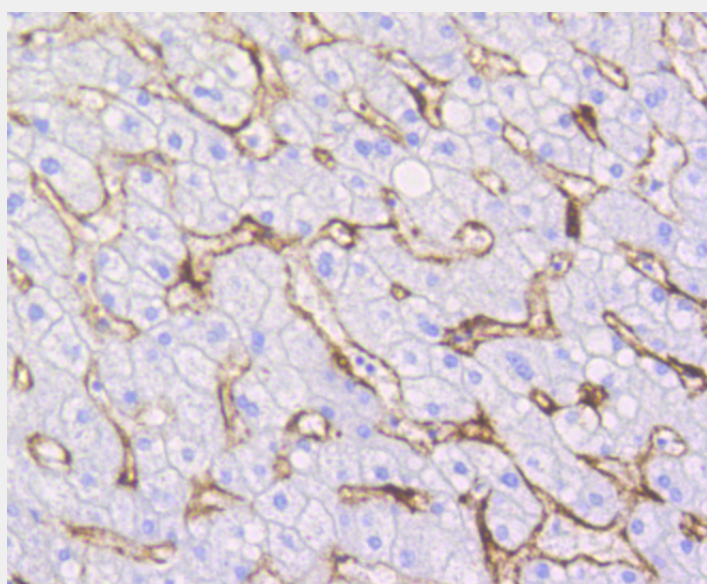
The scaffolding protein encoded by this gene is the main component of the caveolae plasma membranes found in most cell types. The protein links integrin subunits to the tyrosine kinase FYN, an initiating step in coupling integrins to the Ras-ERK pathway and promoting cell cycle progression. The gene is a tumor suppressor gene candidate and a negative regulator of the Ras-p42/44 mitogen-activated kinase cascade. Caveolin 1 and caveolin 2 are located next to each other on chromosome 7 and express colocalizing proteins that form a stable hetero-oligomeric complex. Mutations in this gene have been associated with Berardinelli-Seip congenital lipodystrophy. Alternatively spliced transcripts encode alpha and beta isoforms of caveolin 1.



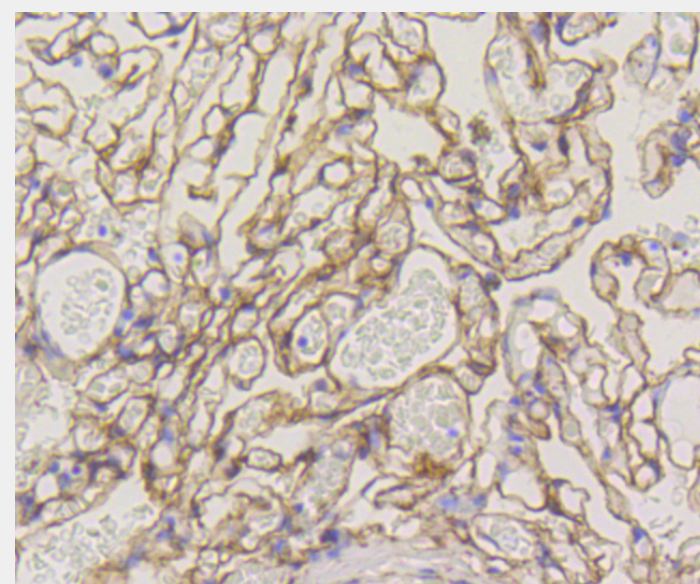
Western blot analysis of extracts of A-431 cells, using CAV1 antibody. Secondary antibody: HRP Goat Anti-Rabbit IgG (H+L) at 1:10000 dilution. Lysates/proteins: 25ug per lane. Blocking buffer: 3% nonfat dry milk in TBST.



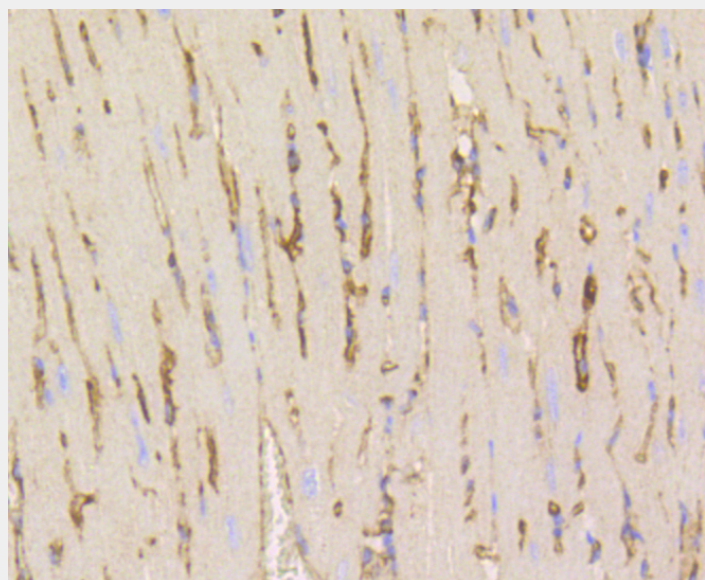
Immunohistochemistry of paraffin-embedded mouse lung using CAV1 antibody at dilution of 1:100 (40x lens).



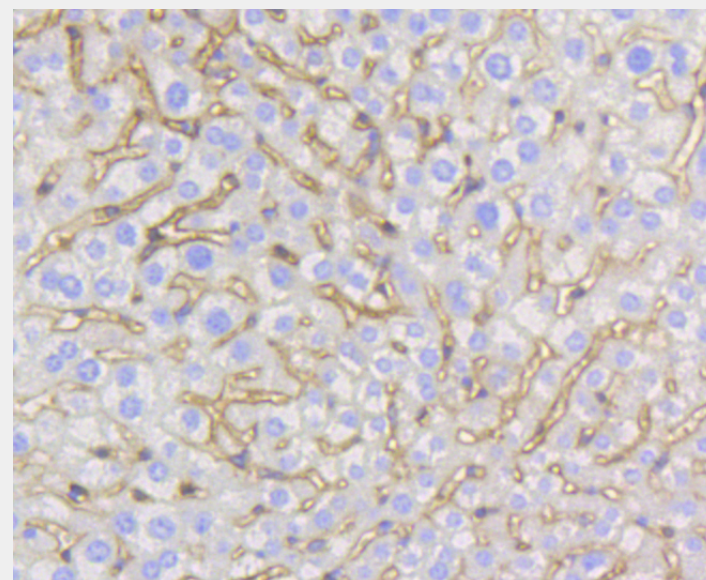
Immunohistochemistry of paraffin-embedded human liver using CAV1 antibody at dilution of 1:100 (40x lens).



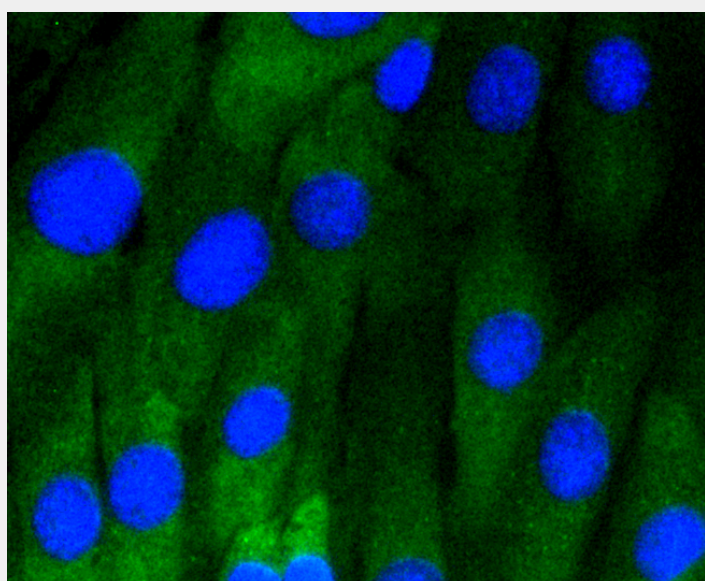
Immunohistochemistry of paraffin-embedded human lung using CAV1 antibody at dilution of 1:100 (40x lens).



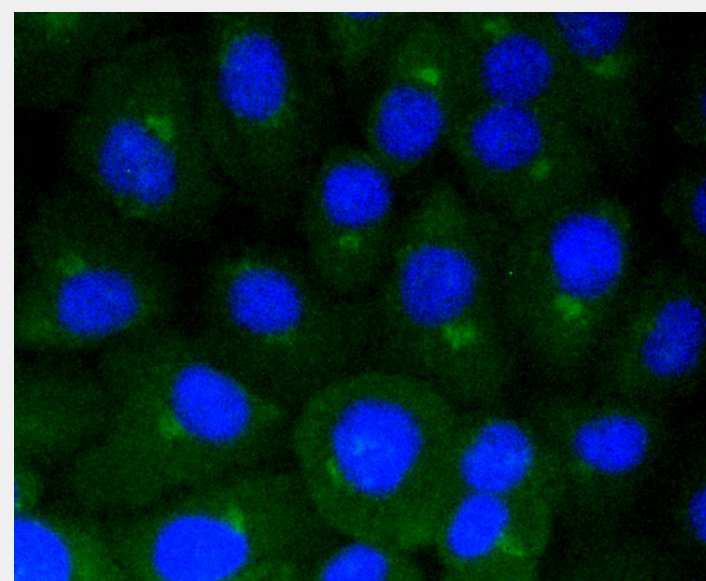
Immunohistochemistry of paraffin-embedded mouse heart using CAV1 antibody at dilution of 1:100 (40x lens).



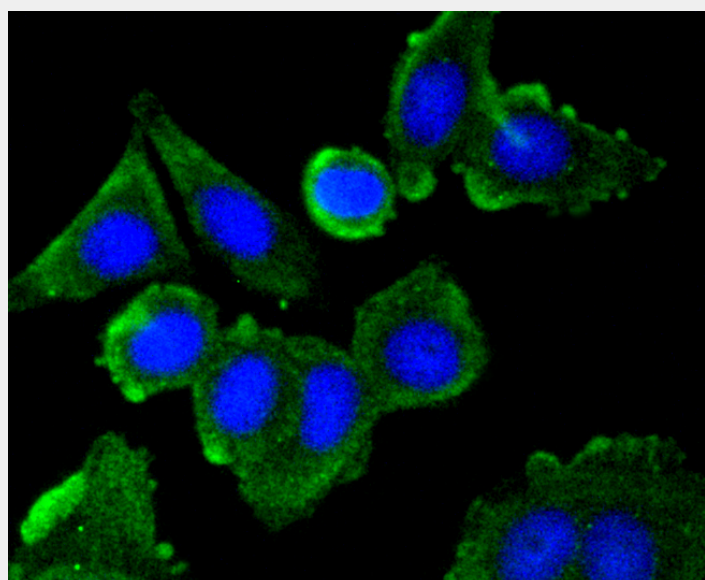
Immunohistochemistry of paraffin-embedded mouse liver using CAV1 antibody at dilution of 1:100 (40x lens).



Immunofluorescence analysis of NIH-3T3 cells using CAV1 antibody.



Immunofluorescence analysis of A549 cells using CAV1 antibody.



Immunofluorescence analysis of MCF-7 cells using CAV1 antibody.

All products are for RESEARCH USE ONLY. Not for diagnostic & therapeutic purposes!