

Anti RHOA / RHOB / RHOC Antibody

Catalog No: tcsa15039



Available Sizes

Size: 100μl



Specifications

Application:

WB, IHC, IF

Species Reactivity:

Human, Mouse, Rat

Host Species:

Rabbit

Immunogen / Amino acids:

Recombinant protein of human RHOC

Conjugation:

Unconjugated

Clonality:

Monoclonal

Isotype:

IgG

Form:

Liquid

Storage Buffer:

PBS with 0.02% sodium azide, 50% glycerol, pH7.3.

Recommended Dilution:

WB 1:500 - 1:2000

IHC 1:500 - 1:1000

IF 1:100 - 1:500

Storage Instruction:

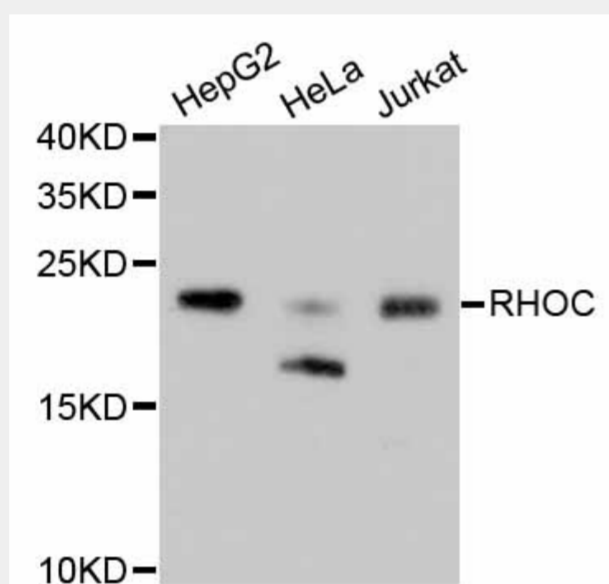
Store at -20C. Avoid freeze / thaw cycles.

Alternative Names:

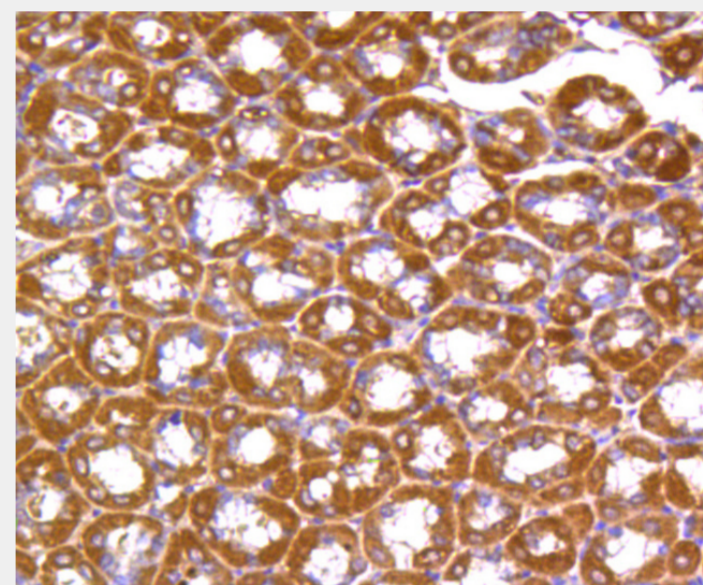
anti-RHOA/RHOB/RHOC antibody

SwissProt:

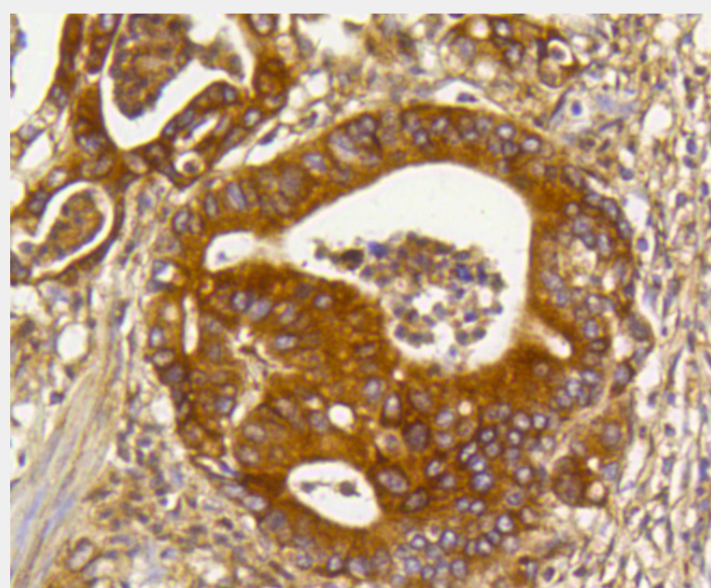
P08134/P61586/P62745



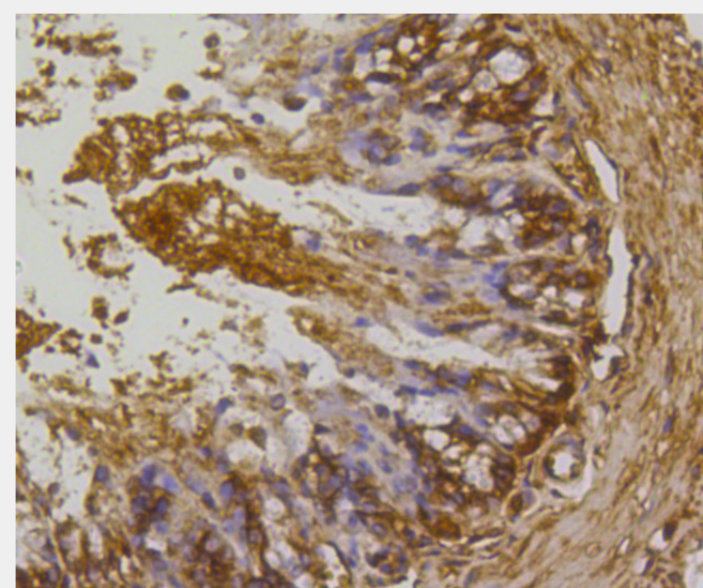
Western blot analysis of extracts of various cell lines, using RHOC/RHOA/RHOB antibody. Secondary antibody: HRP Goat Anti-Rabbit IgG (H+L) at 1:10000 dilution. Lysates/proteins: 25ug per lane. Blocking buffer: 3% nonfat dry milk in TBST.



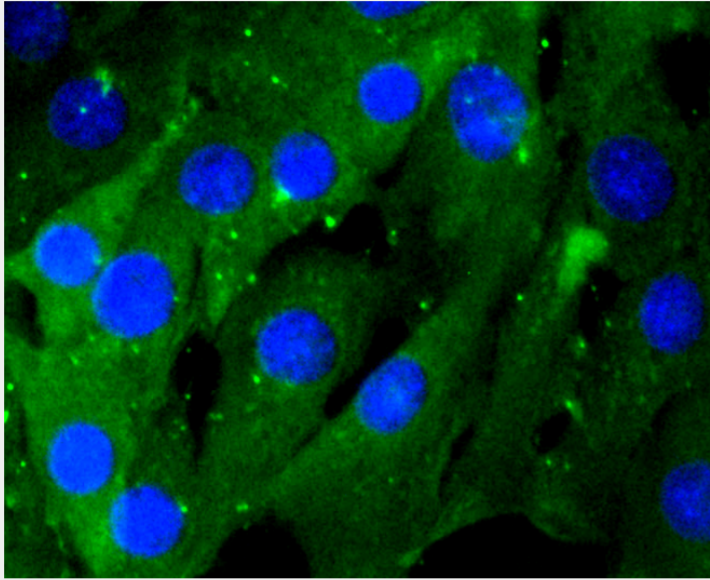
Immunohistochemistry of paraffin-embedded mouse stomach using RHOC/RHOA/RHOB antibody at dilution of 1:100 (40x lens).



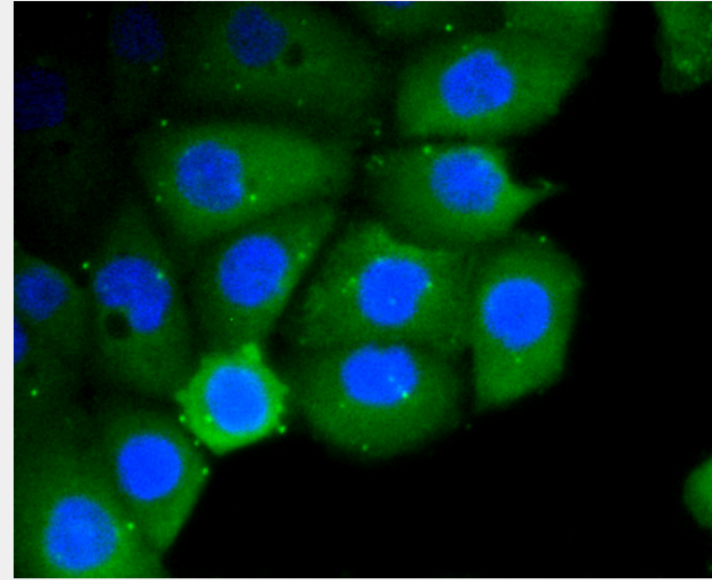
Immunohistochemistry of paraffin-embedded human gastric cancer using RHOC/RHOA/RHOB antibody at dilution of 1:100 (40x lens).



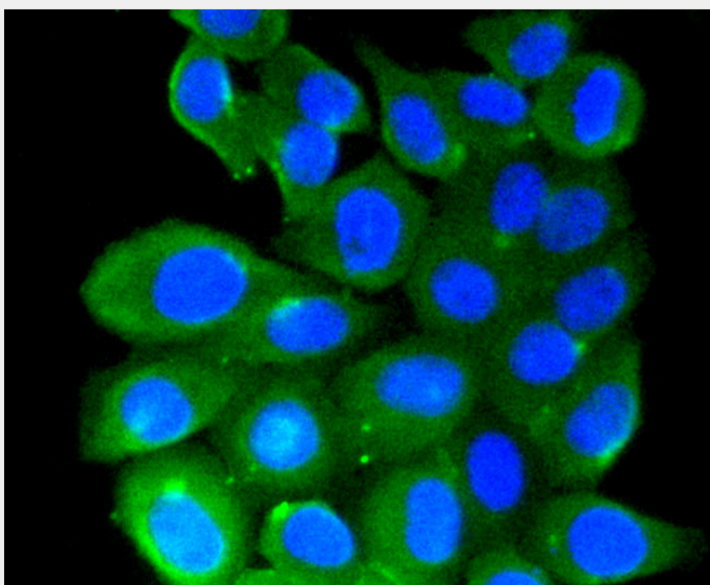
Immunohistochemistry of paraffin-embedded mouse colon using RHOC/RHOA/RHOB antibody at dilution of 1:100 (40x lens).



Immunofluorescence analysis of NIH-3T3 cells using RHOC/RHOA/RHOB antibody.



Immunofluorescence analysis of Ags cells using RHOC/RHOA/RHOB antibody.



Immunofluorescence analysis of HepG2 cells using RHOC/RHOA/RHOB antibody.

All products are for RESEARCH USE ONLY. Not for diagnostic & therapeutic purposes!