

# Anti BAF60a Antibody

Catalog No: tcsa14406



## Available Sizes

---

**Size:** 100µl



## Specifications

---

**Application:**

WB, IHC

**Species Reactivity:**

Human, Mouse, Rat

**Host Species:**

Rabbit

**Immunogen / Amino acids:**

Recombinant protein of mouse Smarcd1

**Conjugation:**

Unconjugated

**Clonality:**

Polyclonal

**Isotype:**

IgG

**Form:**

Liquid

**Storage Buffer:**

PBS with 0.02% sodium azide, 50% glycerol, pH7.3.

**Recommended Dilution:**

WB 1:500 - 1:2000

IHC 1:50 - 1:200

**Storage Instruction:**

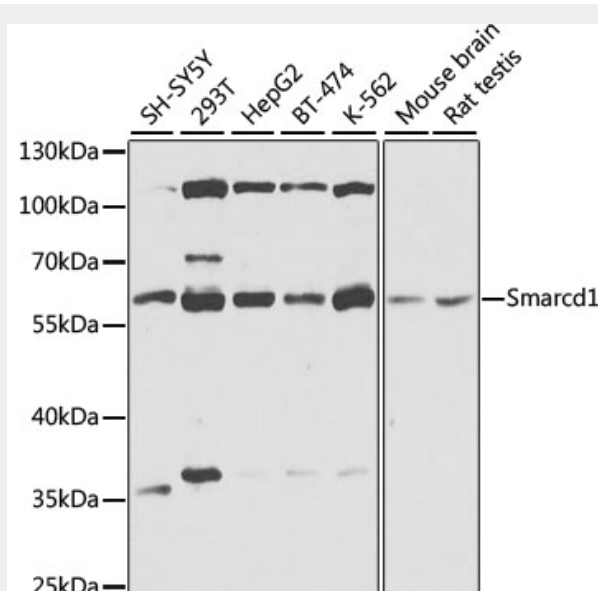
Store at -20C. Avoid freeze / thaw cycles.

**Alternative Names:**

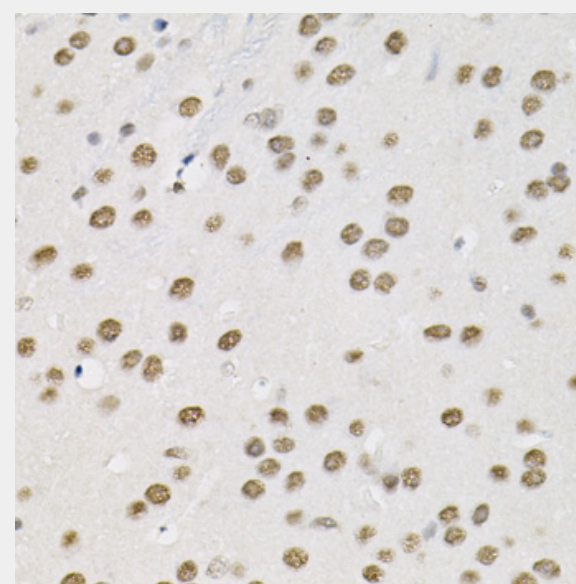
anti-BAF60a antibody

**Product Description**

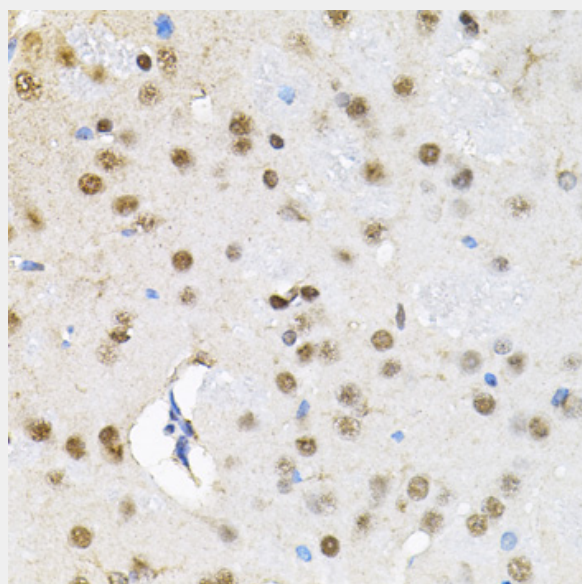
The protein encoded by this gene is a member of the SWI/SNF family of proteins, whose members display helicase and ATPase activities and which are thought to regulate transcription of certain genes by altering the chromatin structure around those genes. The encoded protein is part of the large ATP-dependent chromatin remodeling complex SNF/SWI and contains a predicted leucine zipper motif typical of many transcription factors.



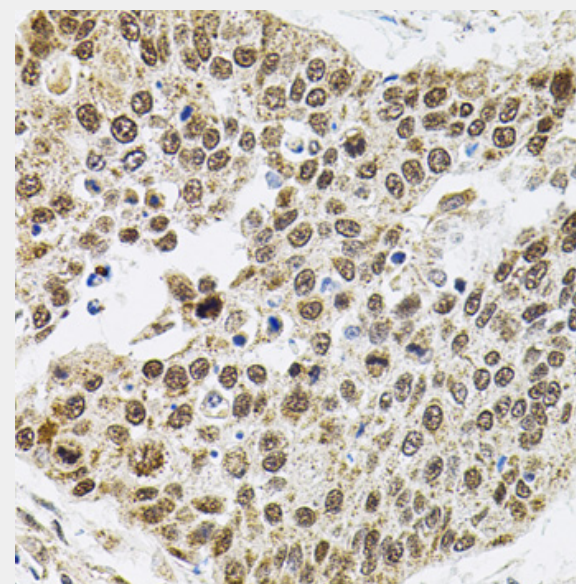
Western blot analysis of extracts of various cell lines, using Smarcd1 antibody at 1:1000 dilution. Secondary antibody: HRP Goat Anti-Rabbit IgG (H+L) at 1:10000 dilution. Lysates/proteins: 25ug per lane. Blocking buffer: 3% nonfat dry milk in TBST. Detection: ECL Basic Kit. Exposure time: 15s.



Immunohistochemistry of paraffin-embedded mouse brain using Smarcd1 antibody (40x lens).

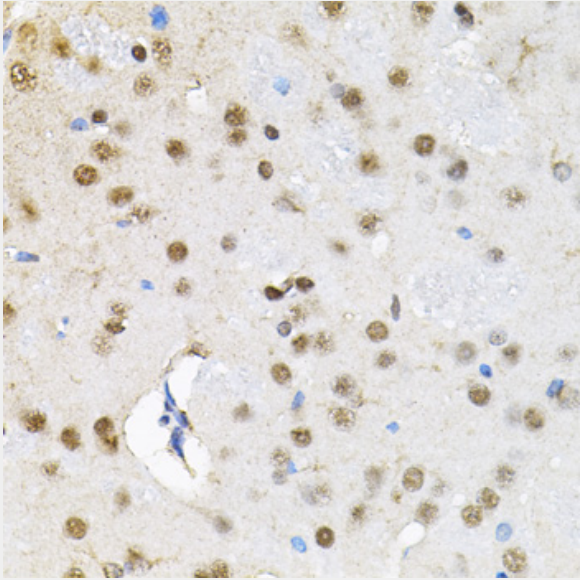


Immunohistochemistry of paraffin-embedded rat brain using Smarcd1 antibody (40x lens).

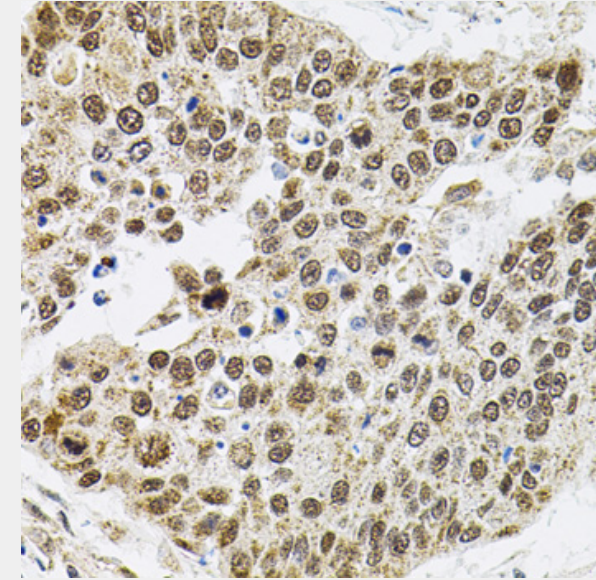


Immunohistochemistry of paraffin-embedded human lung cancer using Smarcd1 antibody (40x lens).

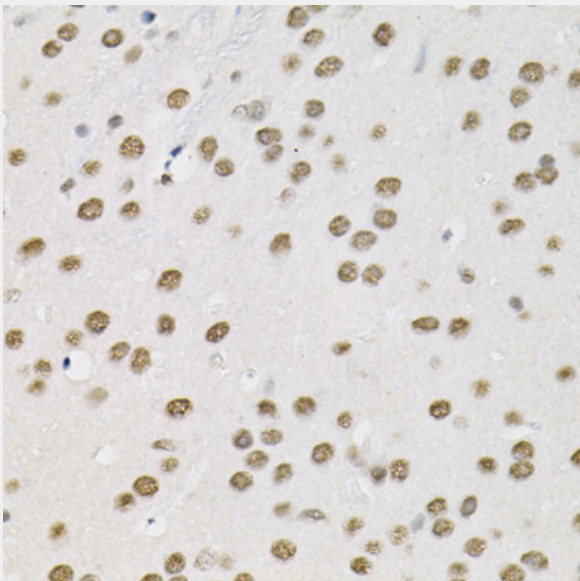




Immunohistochemistry of paraffin-embedded rat brain using Smarcd1 antibody at dilution of 1:100 (40x lens).



Immunohistochemistry of paraffin-embedded human lung cancer using Smarcd1 antibody at dilution of 1:100 (40x lens).



Immunohistochemistry of paraffin-embedded mouse brain using Smarcd1 antibody at dilution of 1:100 (40x lens).

All products are for RESEARCH USE ONLY. Not for diagnostic & therapeutic purposes!