

Anti HIST1H2AG Antibody

Catalog No: tcsa14353



Available Sizes

Size: 100μl



Specifications

Application:

WB, IHC

Species Reactivity:

Human, Mouse, Rat

Host Species:

Rabbit

Immunogen / Amino acids:

Recombinant protein of human HIST1H2AG

Conjugation:

Unconjugated

Clonality:

Polyclonal

Isotype:

IgG

Form:

Liquid

Storage Buffer:

PBS with 0.02% sodium azide, 50% glycerol, pH7.3.

Recommended Dilution:

WB 1:500 - 1:2000

IHC 1:50 - 1:200

Storage Instruction:

Store at -20C. Avoid freeze / thaw cycles.

Alternative Names:

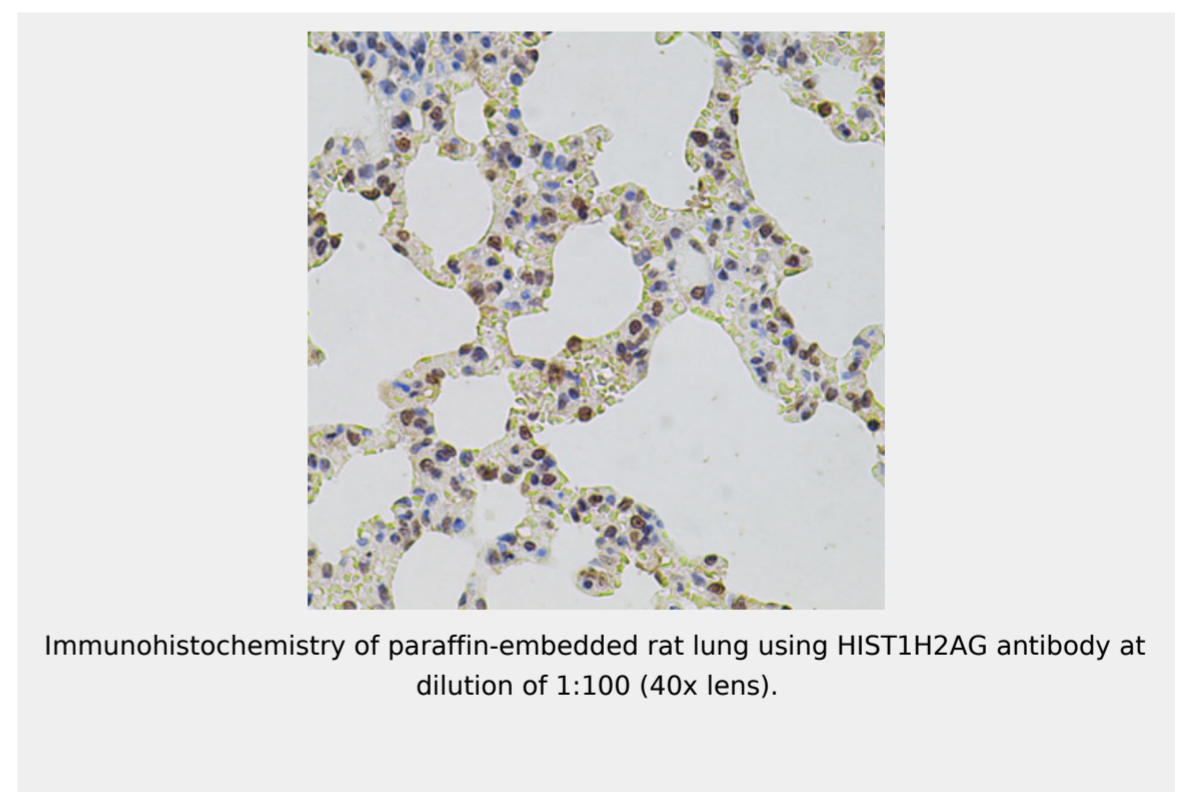
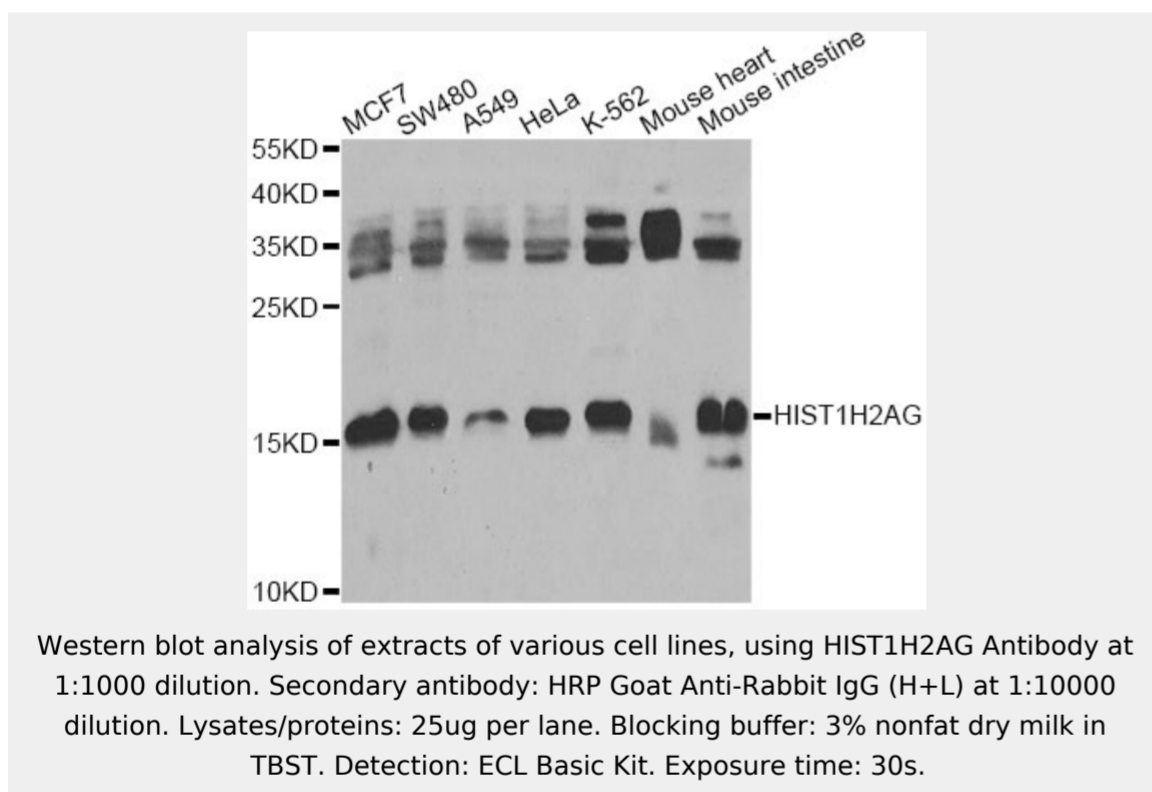
HIST1H2AG antibody; Histone H2A type 1 antibody; H2A.1 antibody; Histone H2A/ptl antibody; HIST1H2AG antibody; H2AFP; antibody; HIST1H2AI antibody; H2AFC; antibody; HIST1H2AK antibody; H2AFD; antibody; HIST1H2AL antibody;

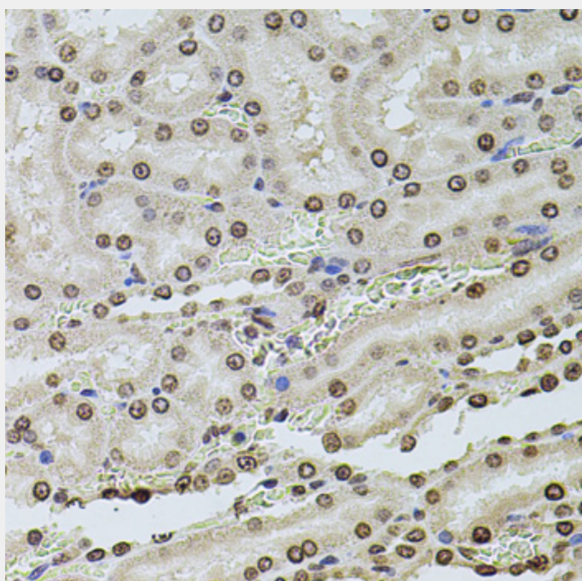
SwissProt:

P0C0S8

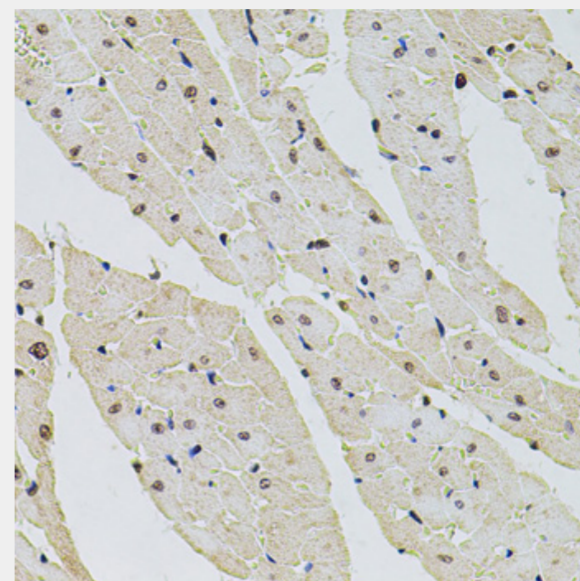
Product Description

Histones are basic nuclear proteins that are responsible for the nucleosome structure of the chromosomal fiber in eukaryotes. Two molecules of each of the four core histones (H2A, H2B, H3, and H4) form an octamer, around which approximately 146 bp of DNA is wrapped in repeating units, called nucleosomes. The linker histone, H1, interacts with linker DNA between nucleosomes and functions in the compaction of chromatin into higher order structures. This gene is intronless and encodes a replication-dependent histone that is a member of the histone H2A family. Transcripts from this gene lack polyA tails but instead contain a palindromic termination element. This gene is found in the small histone gene cluster on chromosome 6p22-p21.3.

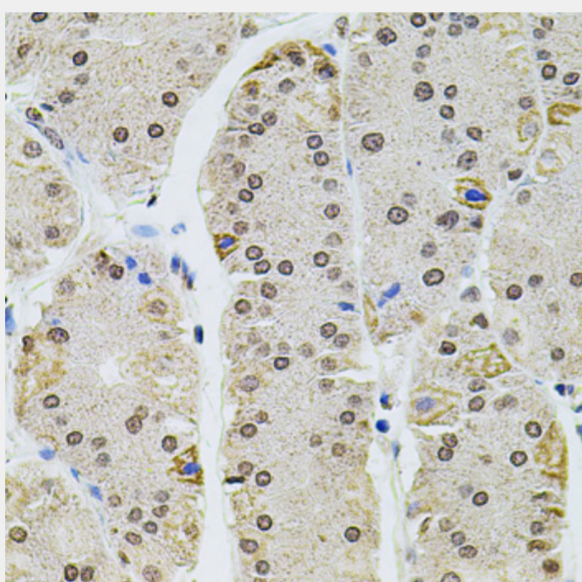




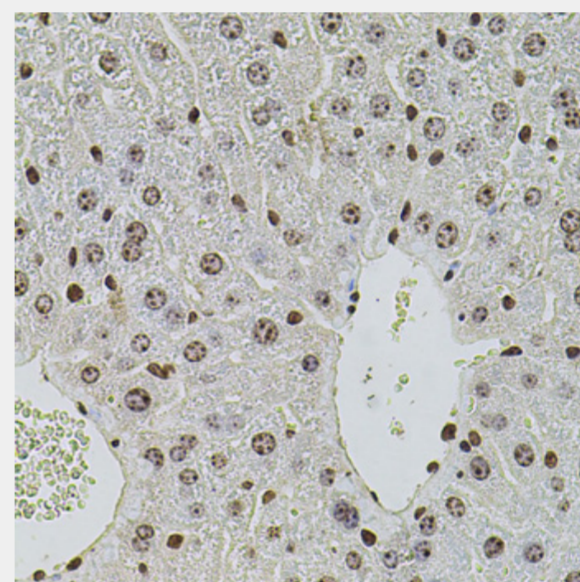
Immunohistochemistry of paraffin-embedded rat kidney using HIST1H2AG antibody at dilution of 1:100 (40x lens).



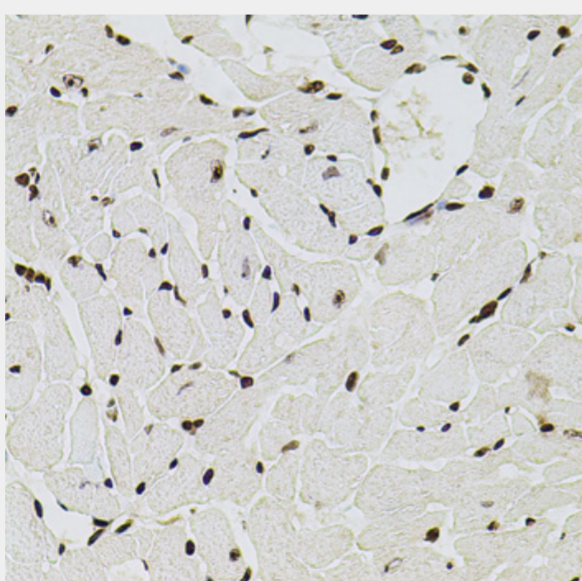
Immunohistochemistry of paraffin-embedded rat heart using HIST1H2AG antibody at dilution of 1:100 (40x lens).



Immunohistochemistry of paraffin-embedded human stomach using HIST1H2AG antibody at dilution of 1:100 (40x lens).



Immunohistochemistry of paraffin-embedded mouse liver using HIST1H2AG antibody at dilution of 1:100 (40x lens).



Immunohistochemistry of paraffin-embedded mouse heart using HIST1H2AG antibody at dilution of 1:100 (40x lens).

All products are for RESEARCH USE ONLY. Not for diagnostic & therapeutic purposes!