

# Anti PLK4 Antibody

Catalog No: tcsa14321



## Available Sizes

---

**Size:** 100µl



## Specifications

---

**Application:**

WB, IHC

**Species Reactivity:**

Human, Mouse, Rat

**Host Species:**

Rabbit

**Immunogen / Amino acids:**

Recombinant protein of human PLK4

**Conjugation:**

Unconjugated

**Clonality:**

Polyclonal

**Isotype:**

IgG

**Form:**

Liquid

**Storage Buffer:**

PBS with 0.02% sodium azide, 50% glycerol, pH7.3.

**Recommended Dilution:**

WB 1:500 - 1:2000

IHC 1:50 - 1:200

**Storage Instruction:**

Store at -20C. Avoid freeze / thaw cycles.

**Alternative Names:**

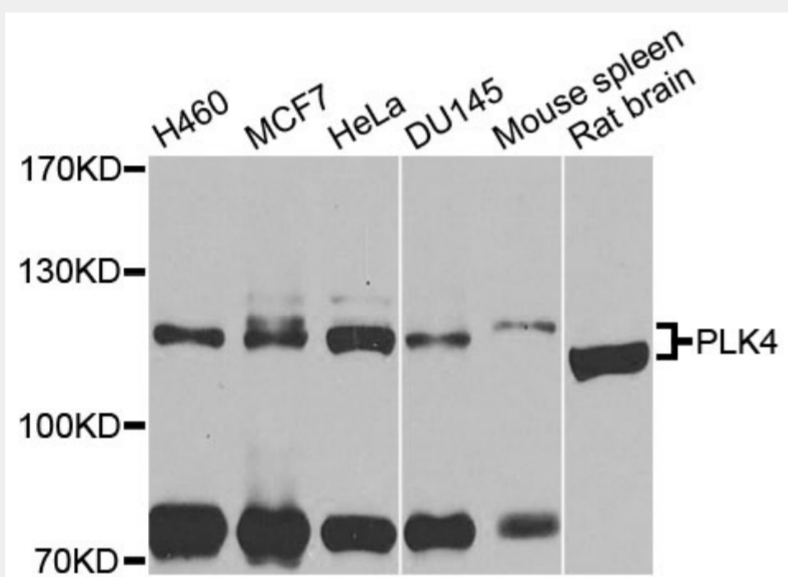
PLK4 antibody; Serine/threonine-protein kinase PLK4 antibody; PLK4 antibody; SAK antibody; STK18 antibody

**SwissProt:**

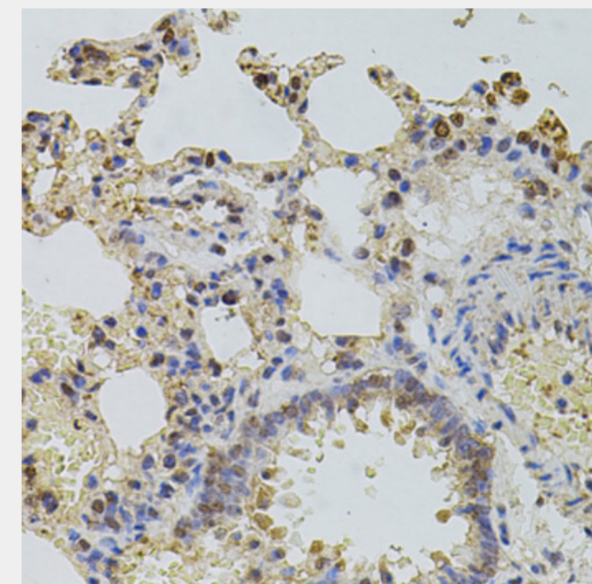
O00444

**Product Description**

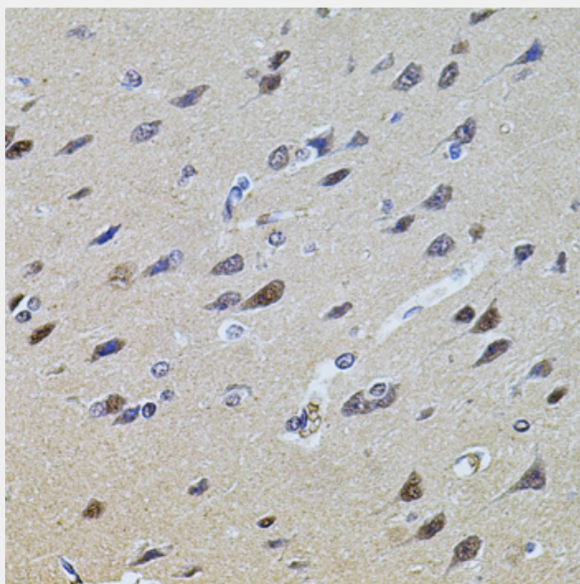
This gene encodes a member of the polo family of serine/threonine protein kinases. The protein localizes to centrioles, complex microtubule-based structures found in centrosomes, and regulates centriole duplication during the cell cycle. Three alternatively spliced transcript variants that encode different protein isoforms have been found for this gene.



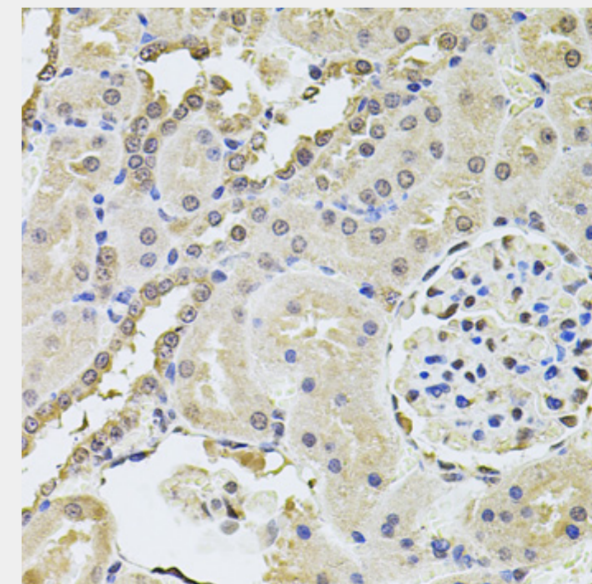
Western blot analysis of extracts of various cell lines, using PLK4 antibody at 1:1000 dilution. Secondary antibody: HRP Goat Anti-Rabbit IgG (H+L) at 1:10000 dilution. Lysates/proteins: 25ug per lane. Blocking buffer: 3% nonfat dry milk in TBST. Detection: ECL Basic Kit. Exposure time: 15s.



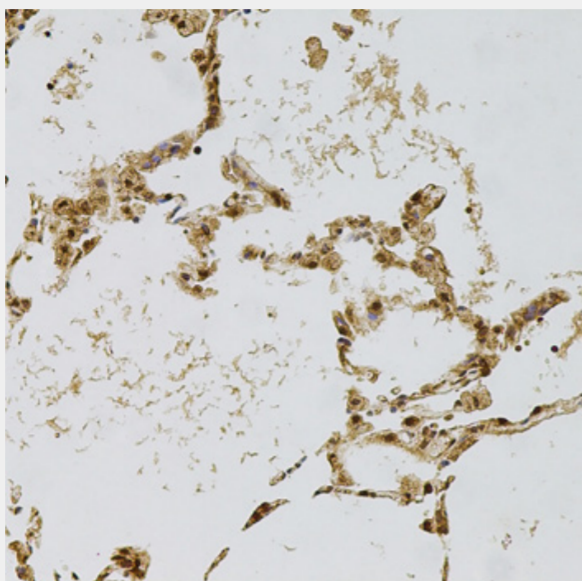
Immunohistochemistry of paraffin-embedded rat lung using PLK4 antibody at dilution of 1:100 (40x lens).



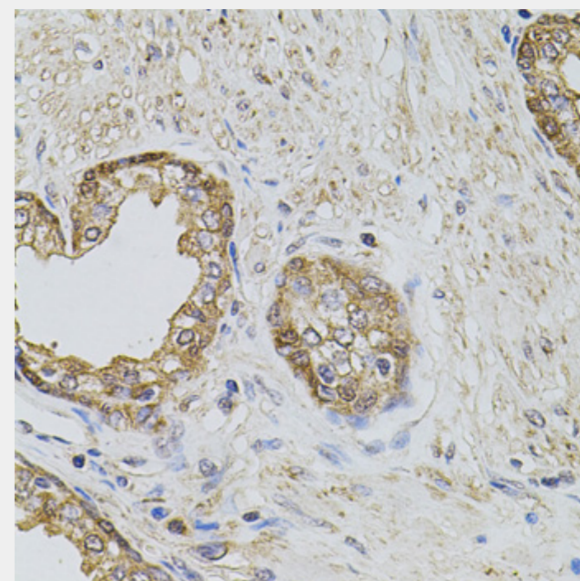
Immunohistochemistry of paraffin-embedded rat brain using PLK4 antibody at dilution of 1:100 (40x lens).



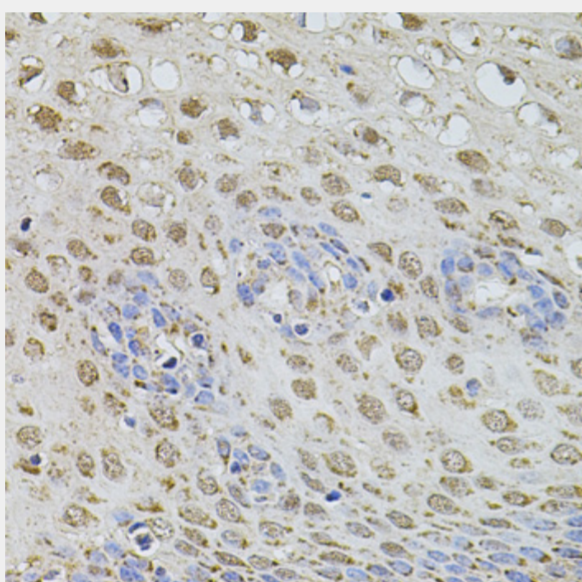
Immunohistochemistry of paraffin-embedded rat kidney using PLK4 antibody at dilution of 1:100 (40x lens).



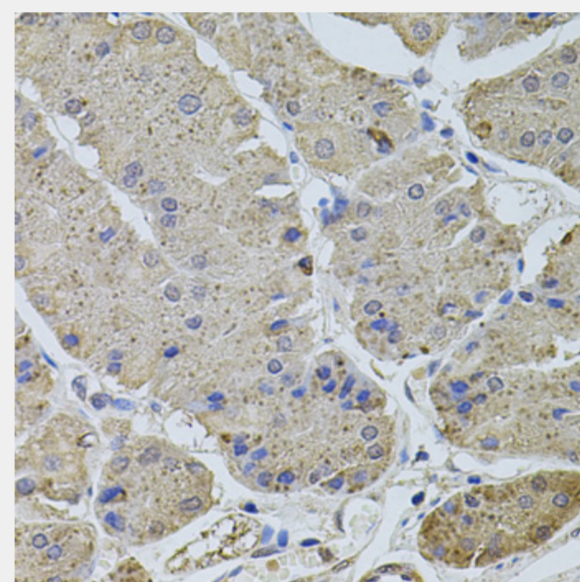
Immunohistochemistry of paraffin-embedded human lung using PLK4 antibody at dilution of 1:100 (20x lens).



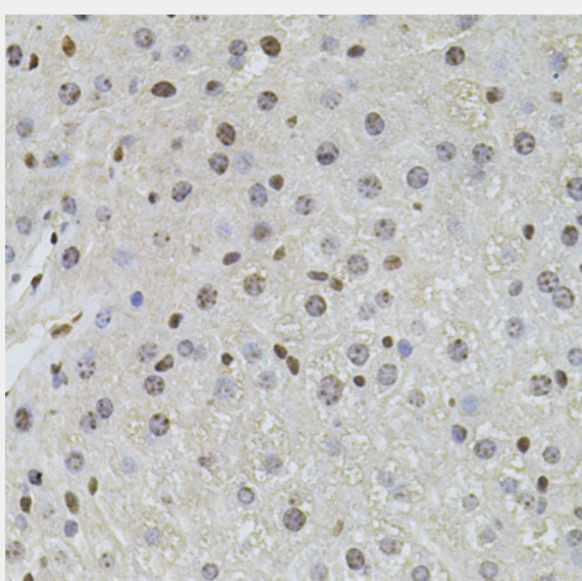
Immunohistochemistry of paraffin-embedded human prostate using PLK4 antibody at dilution of 1:100 (40x lens).



Immunohistochemistry of paraffin-embedded human esophagus using PLK4 antibody at dilution of 1:100 (40x lens).



Immunohistochemistry of paraffin-embedded human stomach using PLK4 antibody at dilution of 1:100 (40x lens).



Immunohistochemistry of paraffin-embedded mouse liver using PLK4 antibody at dilution of 1:100 (40x lens).

All products are for RESEARCH USE ONLY. Not for diagnostic & therapeutic purposes!