

Anti TRPA1 Antibody

Catalog No: tcsa13722



Available Sizes

Size: 100μl



Specifications

Application:

WB, IHC

Species Reactivity:

Human, Mouse, Rat

Host Species:

Rabbit

Immunogen / Amino acids:

A synthetic peptide of human TRPA1

Conjugation:

Unconjugated

Clonality:

Polyclonal

Isotype:

IgG

Form:

Liquid

Storage Buffer:

PBS with 0.02% sodium azide, 50% glycerol, pH7.3.

Recommended Dilution:

WB 1:500 - 1:2000

IHC 1:50 - 1:200

Storage Instruction:

Store at -20C. Avoid freeze / thaw cycles.

Alternative Names:

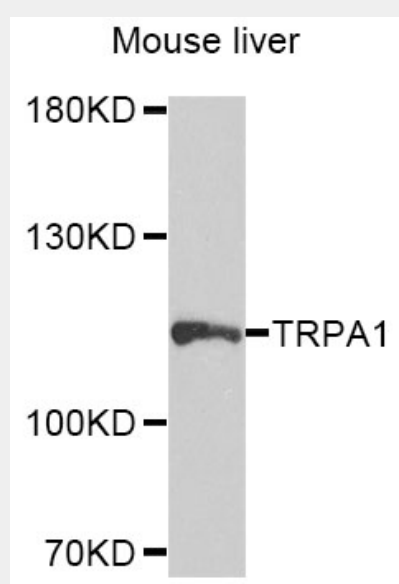
TRPA1 antibody; Transient receptor potential cation channel subfamily A member 1 antibody; Ankyrin-like with transmembrane domains protein 1 antibody; Transformation-sensitive protein p120 antibody; TRPA1 antibody; ANKTM1 antibody

SwissProt:

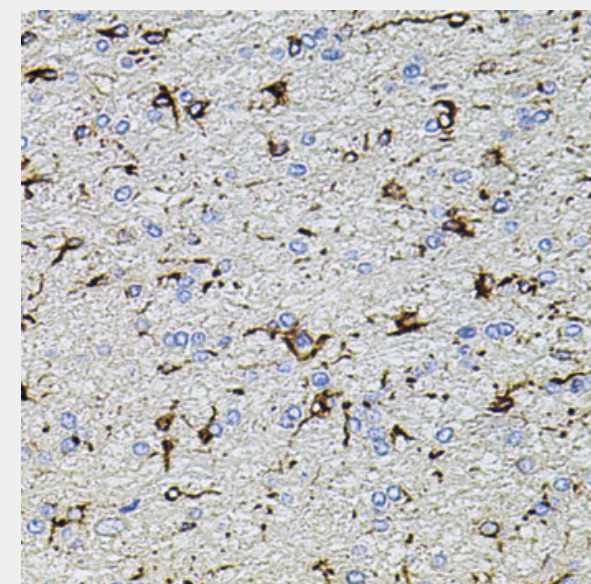
O75762

Product Description

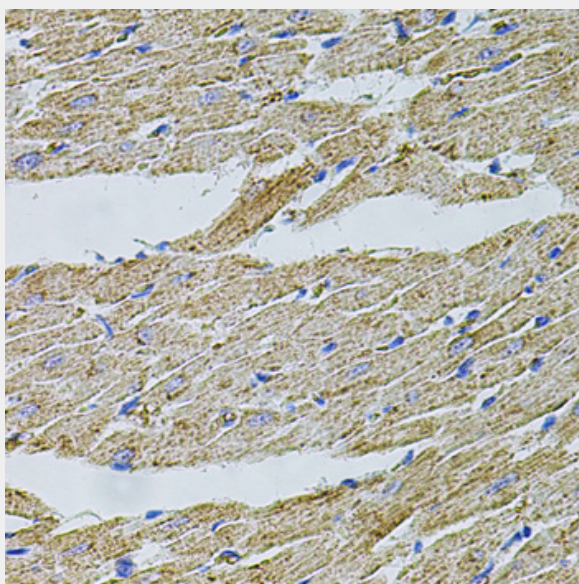
The structure of the protein encoded by this gene is highly related to both the protein ankyrin and transmembrane proteins. The specific function of this protein has not yet been determined; however, studies indicate the function may involve a role in signal transduction and growth control.



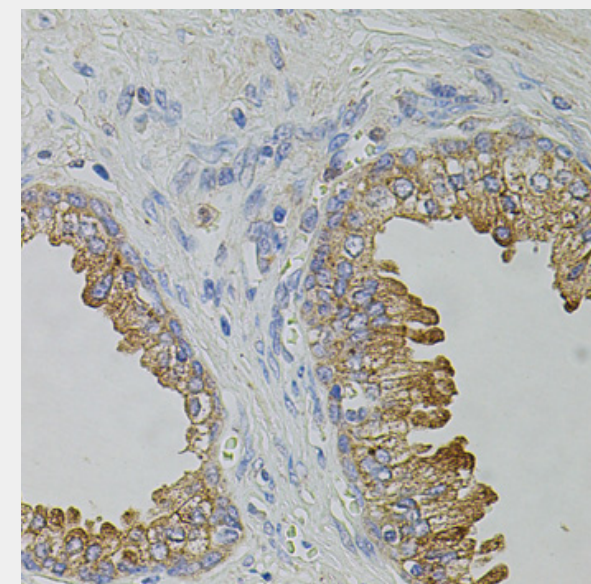
Western blot analysis of extracts of mouse liver, using TRPA1 antibody at 1:1000 dilution. Secondary antibody: HRP Goat Anti-Rabbit IgG (H+L) at 1:10000 dilution. Lysates/proteins: 25ug per lane. Blocking buffer: 3% nonfat dry milk in TBST. Detection: ECL Basic Kit. Exposure time: 90s.



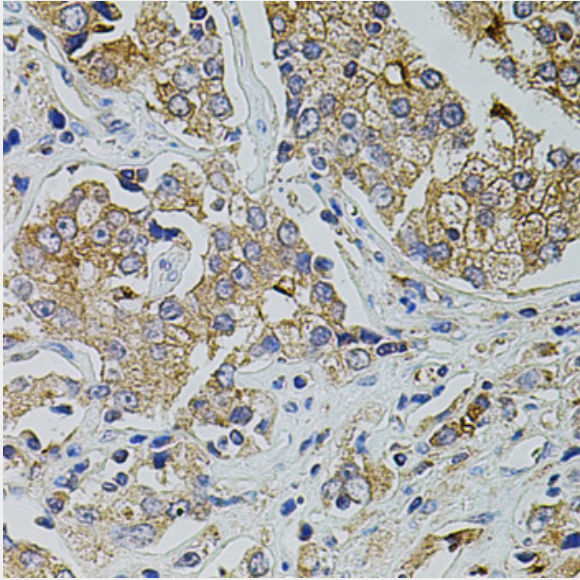
Immunohistochemistry of paraffin-embedded rat brain using TRPA1 antibody at dilution of 1:100 (40x lens).



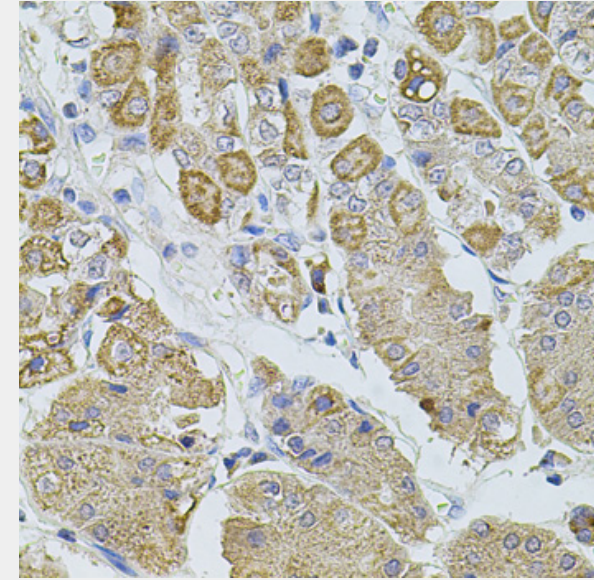
Immunohistochemistry of paraffin-embedded rat heart using TRPA1 antibody at dilution of 1:100 (40x lens).



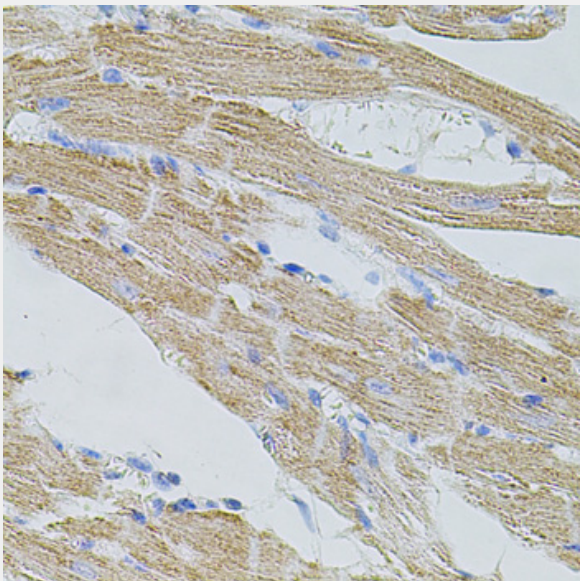
Immunohistochemistry of paraffin-embedded human prostate using TRPA1 antibody at dilution of 1:100 (40x lens).



Immunohistochemistry of paraffin-embedded human prostate cancer using TRPA1 antibody at dilution of 1:100 (40x lens).



Immunohistochemistry of paraffin-embedded human stomach using TRPA1 antibody at dilution of 1:100 (40x lens).



Immunohistochemistry of paraffin-embedded mouse heart using TRPA1 antibody at dilution of 1:100 (40x lens).

All products are for RESEARCH USE ONLY. Not for diagnostic & therapeutic purposes!