

Anti CCT8 Antibody

Catalog No: tcsa13638



Available Sizes

Size: 100μl



Specifications

Application:

WB, IF

Species Reactivity:

Human, Mouse, Rat

Host Species:

Rabbit

Immunogen / Amino acids:

Recombinant protein of human CCT8

Conjugation:

Unconjugated

Clonality:

Polyclonal

Isotype:

IgG

Form:

Liquid

Storage Buffer:

PBS with 0.02% sodium azide, 50% glycerol, pH7.3.

Recommended Dilution:

WB 1:1000 - 1:2000

IF 1:50 - 1:200

Storage Instruction:

Store at -20C. Avoid freeze / thaw cycles.

Alternative Names:

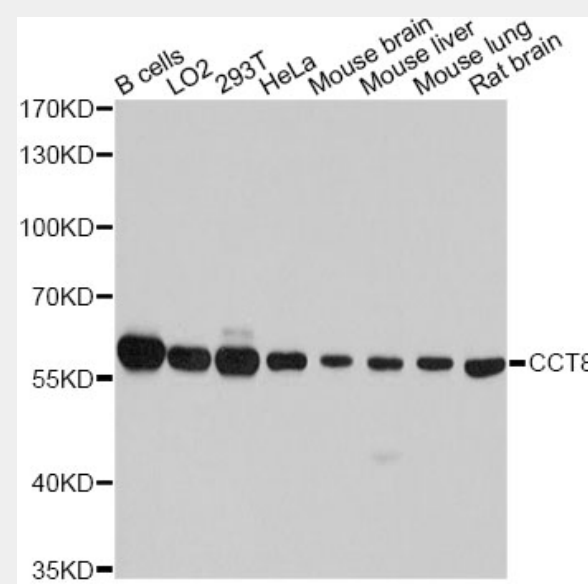
CCT8 antibody; T-complex protein 1 subunit theta antibody; TCP-1-theta antibody; CCT-theta antibody; Chaperonin containing T-complex polypeptide 1 subunit 8 antibody; Renal carcinoma antigen NY-REN-15 antibody; CCT8 antibody; C21orf11

SwissProt:

P50990

Product Description

This gene encodes the theta subunit of the CCT chaperonin, which is abundant in the eukaryotic cytosol and may be involved in the transport and assembly of newly synthesized proteins. Alternative splicing results in multiple transcript variants of this gene. A pseudogene related to this gene is located on chromosome 1.



Western blot analysis of extracts of various cell lines, using CCT8 antibody at 1:7000 dilution. Secondary antibody: HRP Goat Anti-Rabbit IgG (H+L) at 1:10000 dilution. Lysates/proteins: 25ug per lane. Blocking buffer: 3% nonfat dry milk in TBST. Detection: ECL Basic Kit. Exposure time: 5s.

All products are for RESEARCH USE ONLY. Not for diagnostic & therapeutic purposes!