

Anti CDKN1A Antibody

Catalog No: tcsa13586



Available Sizes

Size: 100µl



Specifications

Application:

WB, IHC

Species Reactivity:

Human, Mouse, Rat

Host Species:

Rabbit

Immunogen / Amino acids:

Recombinant protein of human CDKN1A

Conjugation:

Unconjugated

Clonality:

Polyclonal

Isotype:

IgG

Form:

Liquid

Storage Buffer:

PBS with 0.02% sodium azide, 50% glycerol, pH7.3.

Recommended Dilution:

WB 1:200 - 1:500

IHC 1:20 - 1:100

Storage Instruction:

Store at -20C. Avoid freeze / thaw cycles.

Alternative Names:

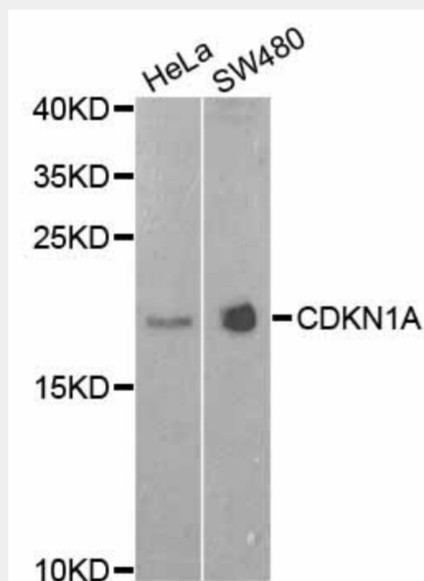
CDKN1A antibody; Cyclin-dependent kinase inhibitor 1 antibody; CDK-interacting protein 1 antibody; Melanoma differentiation-associated protein 6 antibody; MDA-6 antibody; p21 antibody; CDKN1A antibody; CAP20 antibody; CDKN1 antibody

SwissProt:

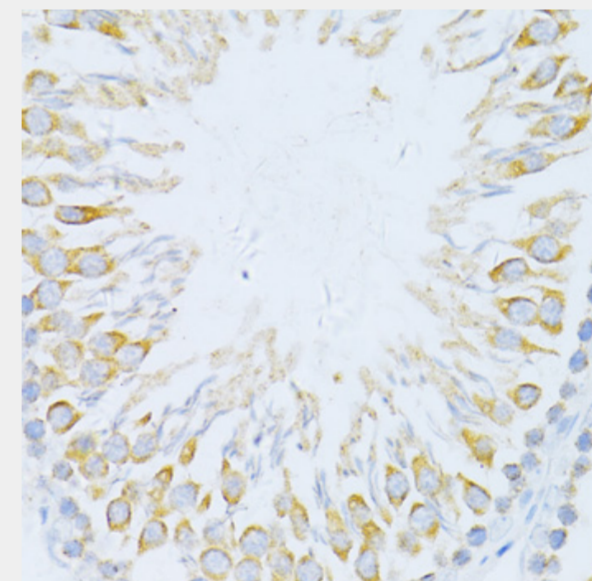
P38936

Product Description

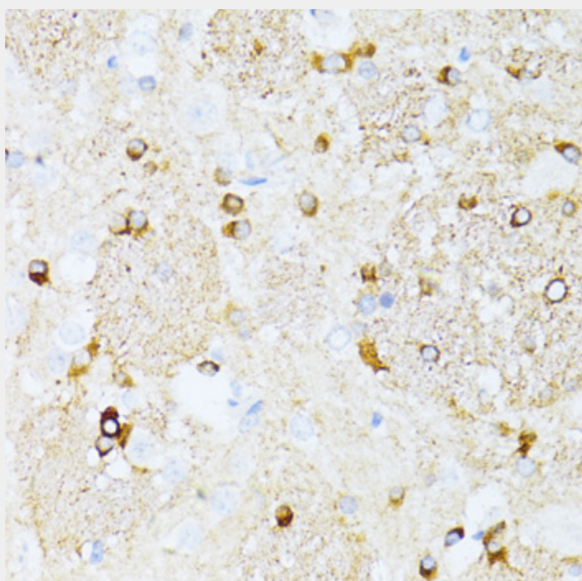
This gene encodes a potent cyclin-dependent kinase inhibitor. The encoded protein binds to and inhibits the activity of cyclin-cyclin-dependent kinase2 or -cyclin-dependent kinase4 complexes, and thus functions as a regulator of cell cycle progression at G1. The expression of this gene is tightly controlled by the tumor suppressor protein p53, through which this protein mediates the p53-dependent cell cycle G1 phase arrest in response to a variety of stress stimuli. This protein can interact with proliferating cell nuclear antigen, a DNA polymerase accessory factor, and plays a regulatory role in S phase DNA replication and DNA damage repair. This protein was reported to be specifically cleaved by CASP3-like caspases, which thus leads to a dramatic activation of cyclin-dependent kinase2, and may be instrumental in the execution of apoptosis following caspase activation. Mice that lack this gene have the ability to regenerate damaged or missing tissue. Multiple alternatively spliced variants have been found for this gene.



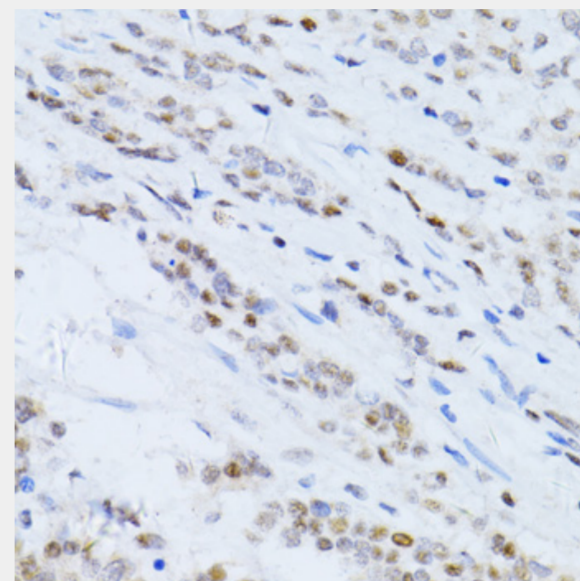
Western blot analysis of extracts of various cell lines, using CDKN1A antibody at 1:1000 dilution. Secondary antibody: HRP Goat Anti-Rabbit IgG (H+L) at 1:10000 dilution. Lysates/proteins: 25ug per lane. Blocking buffer: 3% nonfat dry milk in TBST.



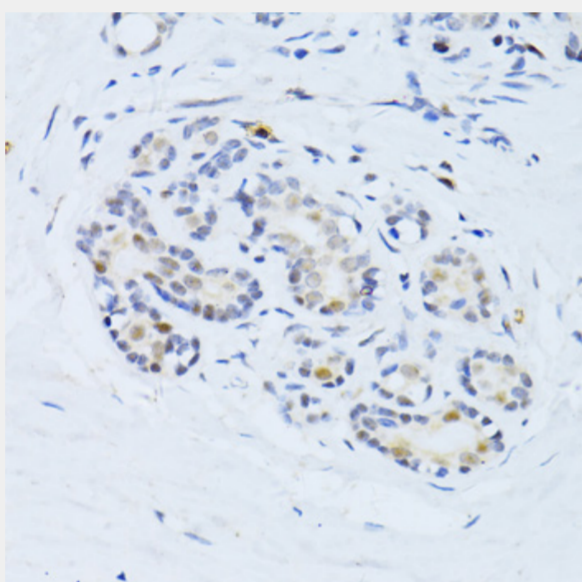
Immunohistochemistry of paraffin-embedded rat testis using CDKN1A antibody at dilution of 1:100 (40x lens).



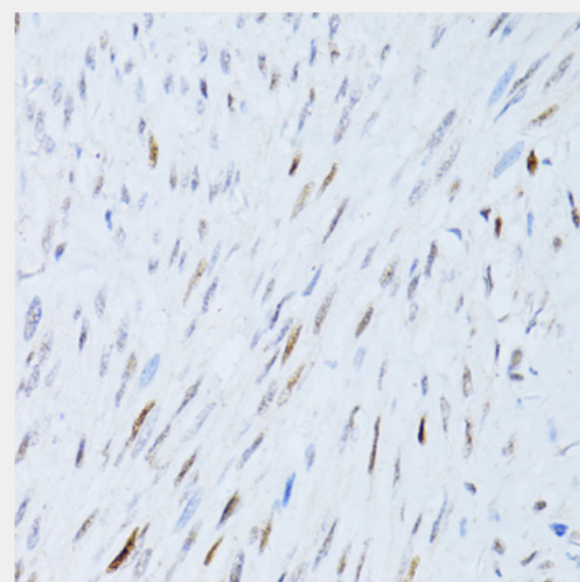
Immunohistochemistry of paraffin-embedded rat brain using CDKN1A antibody at dilution of 1:100 (40x lens).



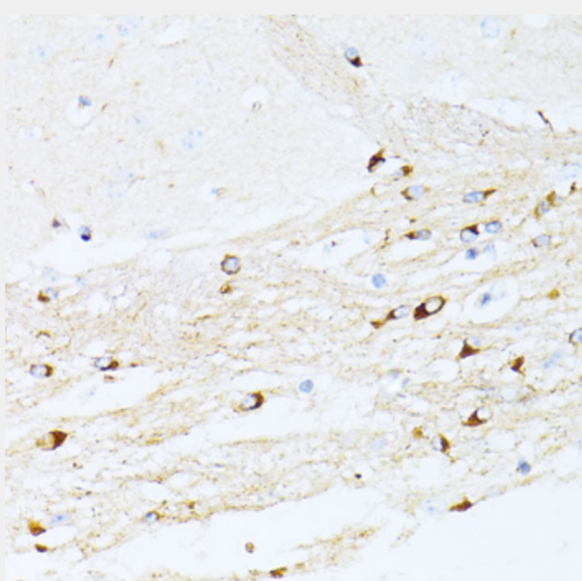
Immunohistochemistry of paraffin-embedded human colon carcinoma using CDKN1A antibody at dilution of 1:100 (40x lens).



Immunohistochemistry of paraffin-embedded human breast using CDKN1A antibody at dilution of 1:100 (40x lens).



Immunohistochemistry of paraffin-embedded human uterine cancer using CDKN1A antibody at dilution of 1:100 (40x lens).



Immunohistochemistry of paraffin-embedded mouse brain using CDKN1A antibody at dilution of 1:100 (40x lens).

All products are for RESEARCH USE ONLY. Not for diagnostic & therapeutic purposes!