

Anti TEFM Antibody

Catalog No: tcsa13264



Available Sizes

Size: 100µl



Specifications

Application:

WB, IHC

Species Reactivity:

Human, Mouse, Rat

Host Species:

Rabbit

Immunogen / Amino acids:

Recombinant protein of human TEFM

Conjugation:

Unconjugated

Clonality:

Polyclonal

Isotype:

IgG

Form:

Liquid

Storage Buffer:

PBS with 0.02% sodium azide, 50% glycerol, pH7.3.

Recommended Dilution:

WB 1:500 - 1:2000

IHC 1:50 - 1:200

Storage Instruction:

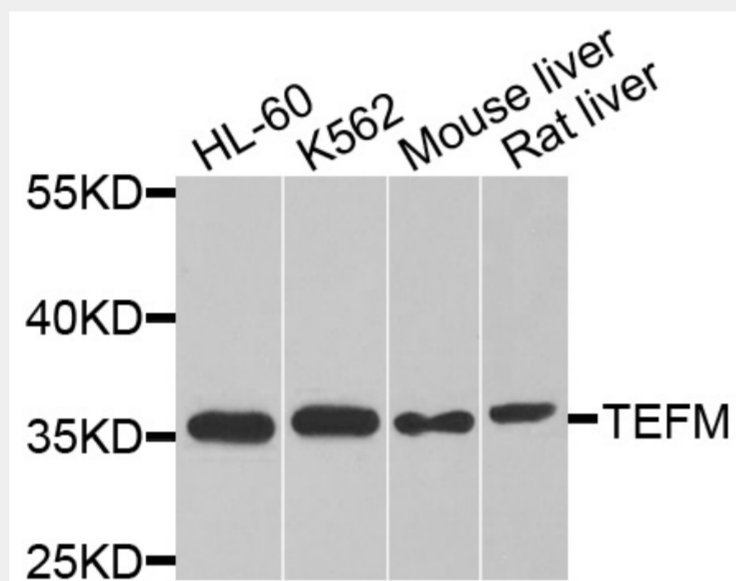
Store at -20C. Avoid freeze / thaw cycles.

Alternative Names:

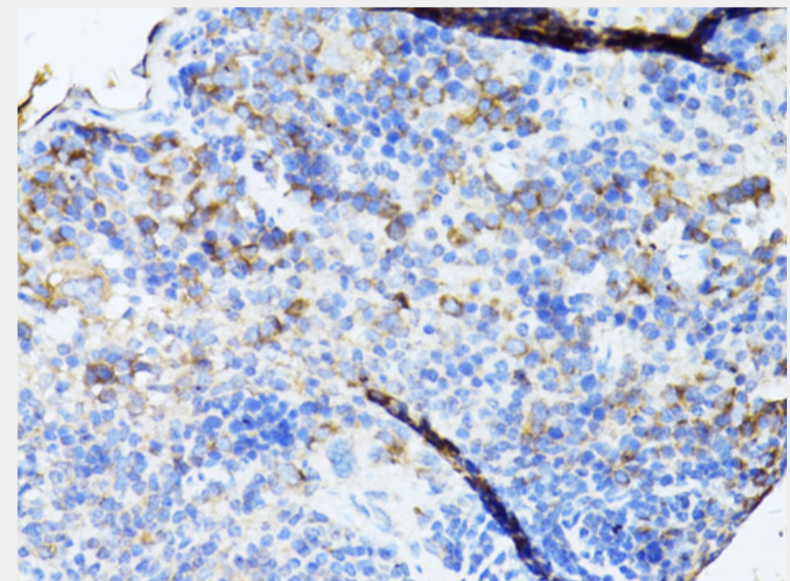
TEFM antibody; Transcription elongation factor antibody; mitochondrial antibody; TEFM antibody; C17orf42 antibody

SwissProt:

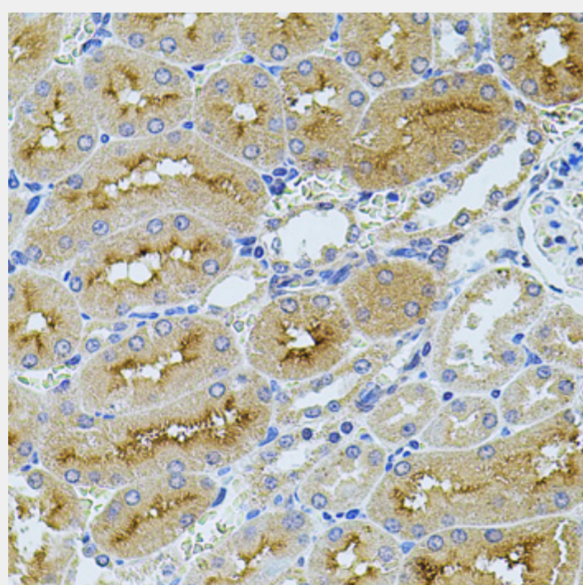
Q96QE5



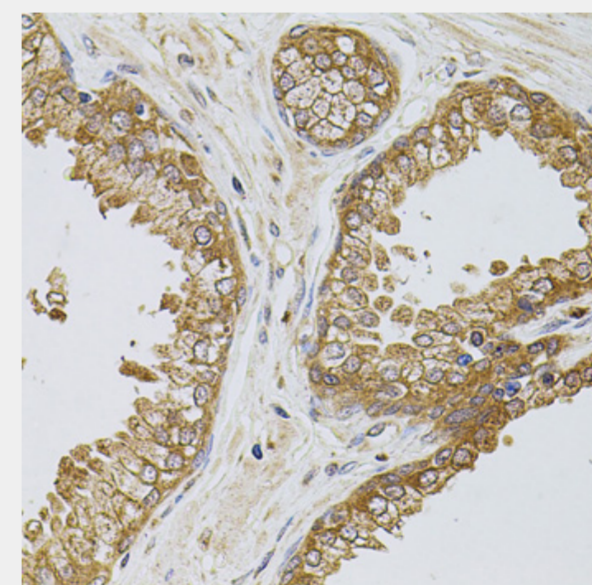
Western blot analysis of extracts of various cell lines, using TEFM antibody at 1:1000 dilution. Secondary antibody: HRP Goat Anti-Rabbit IgG (H+L) at 1:10000 dilution. Lysates/proteins: 25ug per lane. Blocking buffer: 3% nonfat dry milk in TBST. Detection: ECL Basic Kit. Exposure time: 90s.



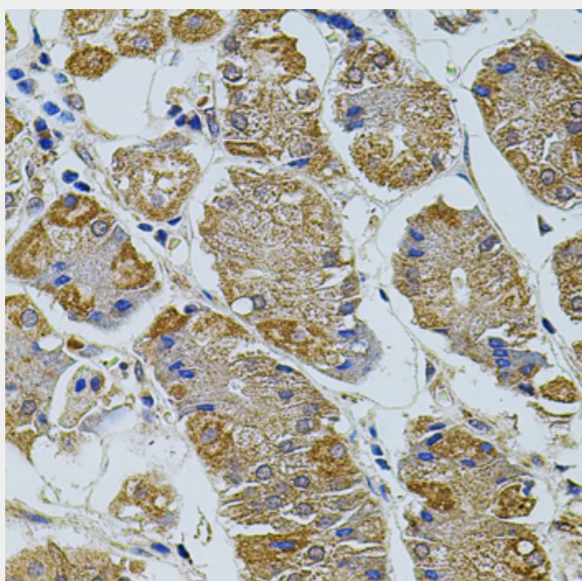
Immunohistochemistry of paraffin-embedded mouse spleen using TEFM antibody at dilution of 1:100 (40x lens).



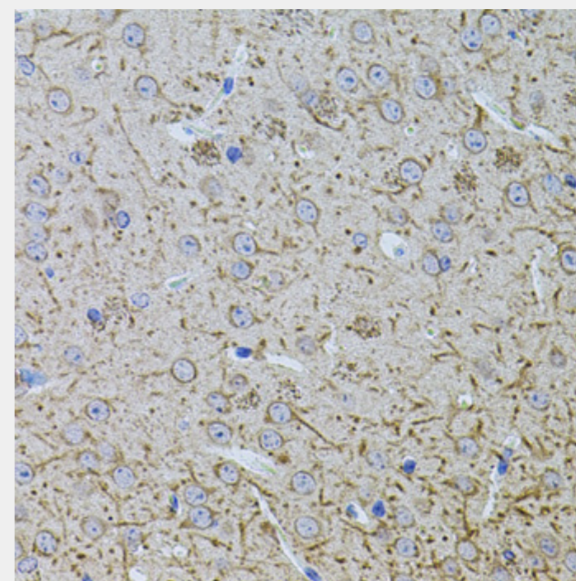
Immunohistochemistry of paraffin-embedded rat kidney using TEFM antibody at dilution of 1:100 (40x lens).



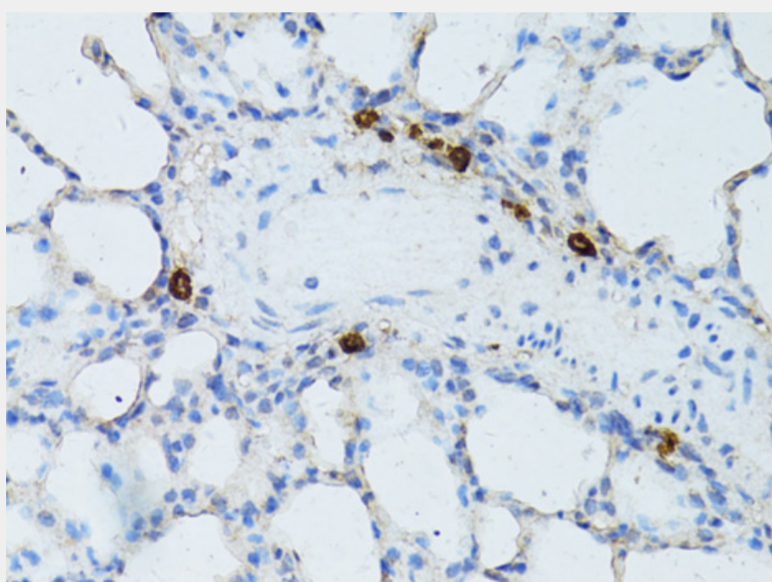
Immunohistochemistry of paraffin-embedded human prostate using TEFM antibody at dilution of 1:100 (40x lens).



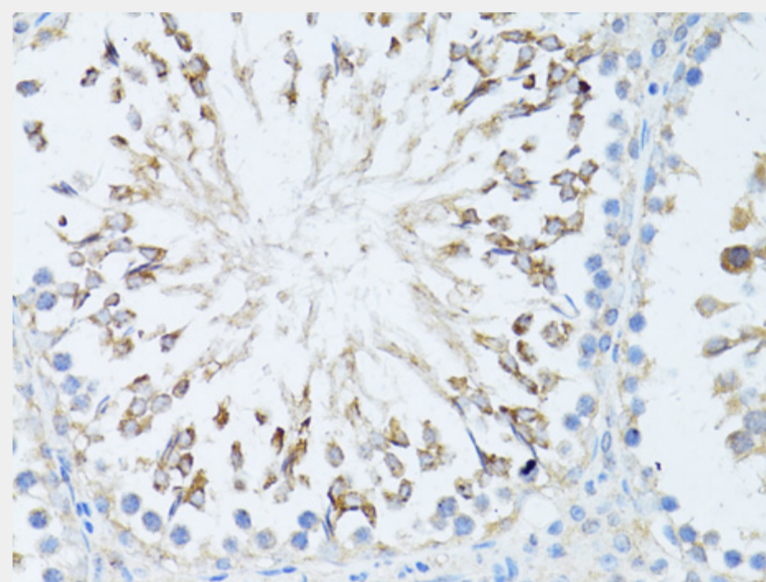
Immunohistochemistry of paraffin-embedded human stomach using TEFM antibody at dilution of 1:100 (40x lens).



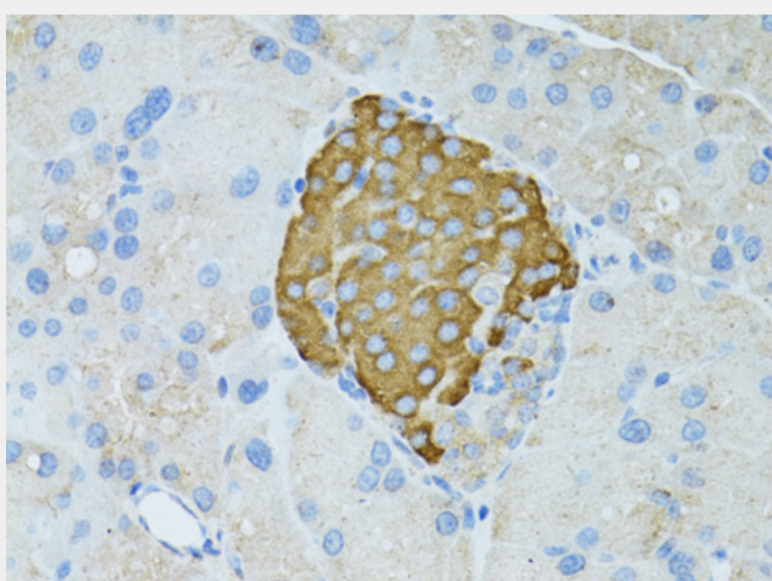
Immunohistochemistry of paraffin-embedded mouse brain using TEFM antibody at dilution of 1:100 (40x lens).



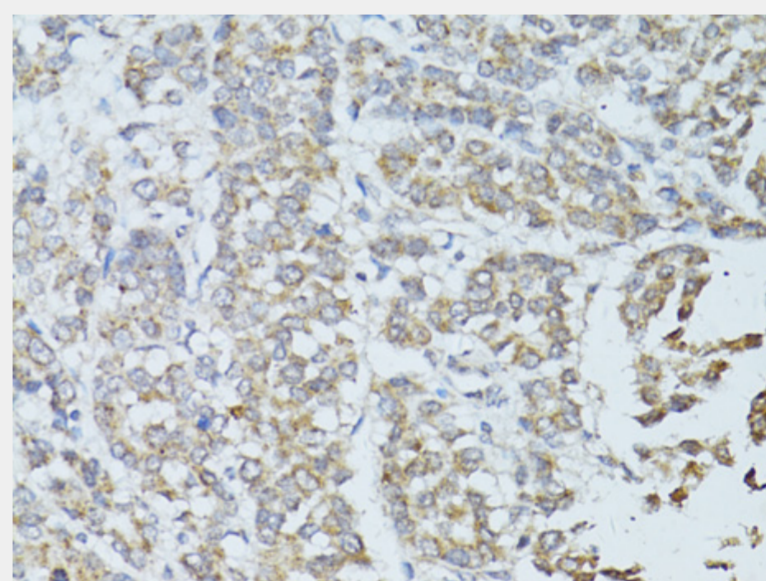
Immunohistochemistry of paraffin-embedded rat lung using TEFM antibody at dilution of 1:100 (40x lens).



Immunohistochemistry of paraffin-embedded rat testis using TEFM antibody at dilution of 1:100 (40x lens).



Immunohistochemistry of paraffin-embedded rat pancreas using TEFM antibody at dilution of 1:100 (40x lens).



Immunohistochemistry of paraffin-embedded human colon carcinoma using TEFM antibody at dilution of 1:100 (40x lens).

All products are for RESEARCH USE ONLY. Not for diagnostic & therapeutic purposes!