

# SiHa

**Catalog No: tcel210**



## Available Sizes

**Size:** 1×10<sup>6</sup>cells/t25culturebottle



## Specifications

### Application:

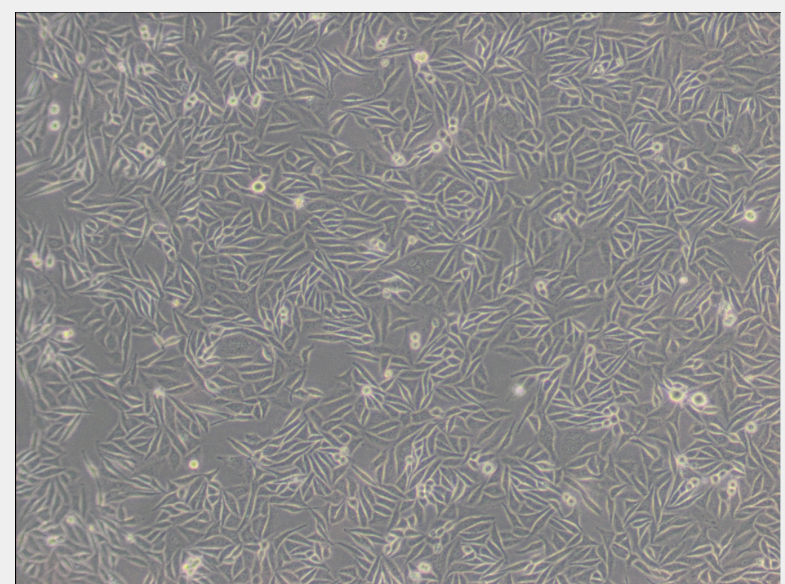
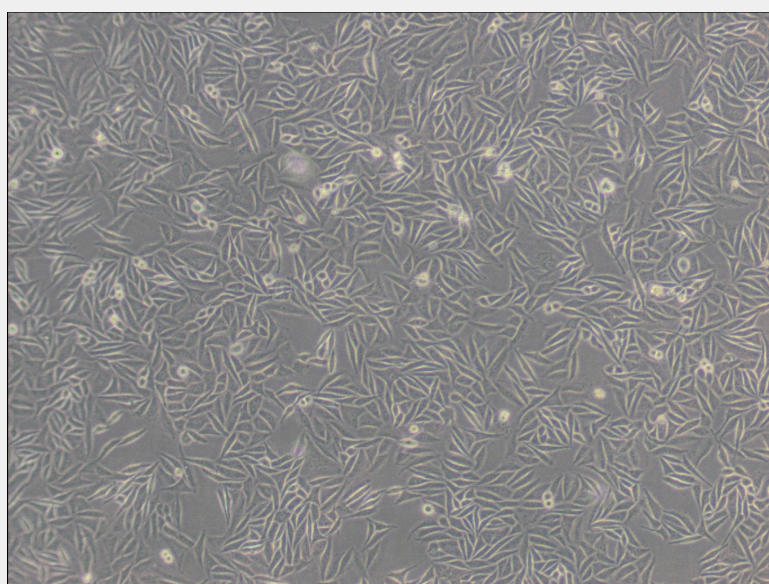
transfection host

### Subculturing:

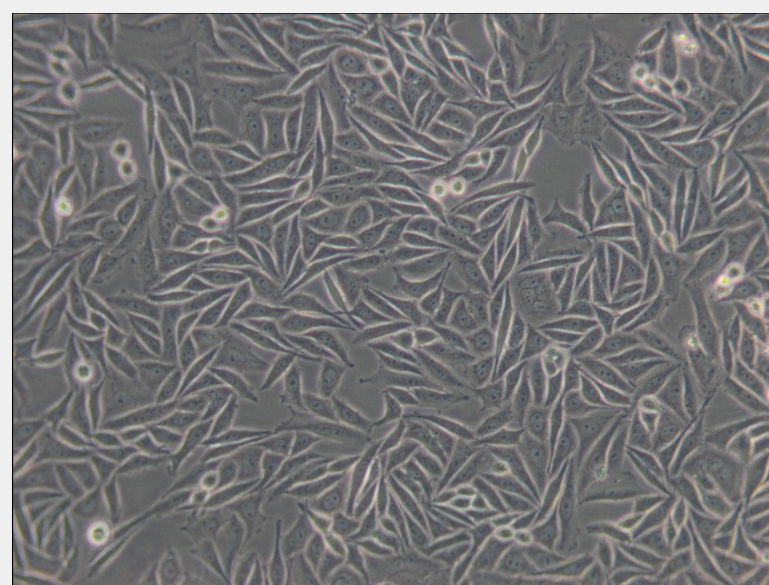
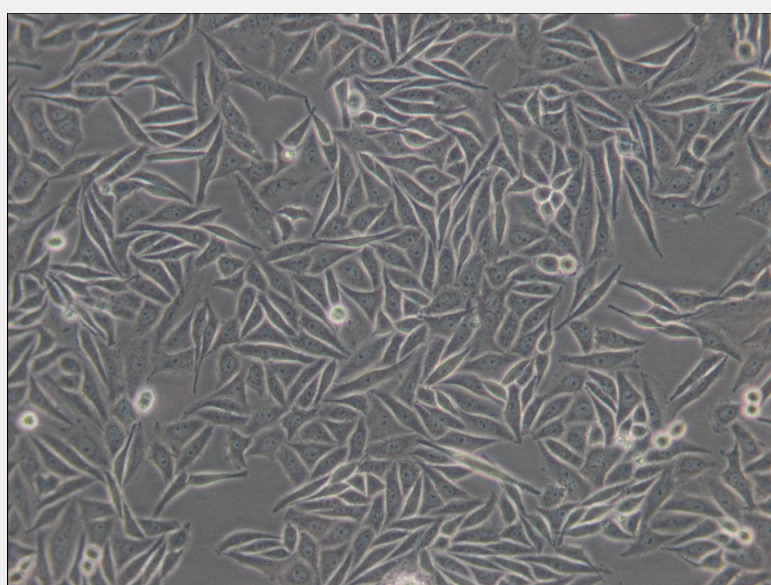
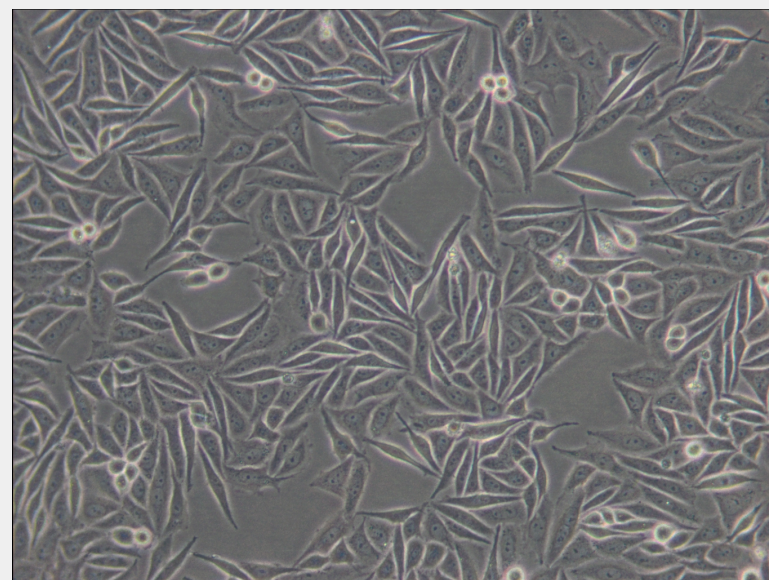
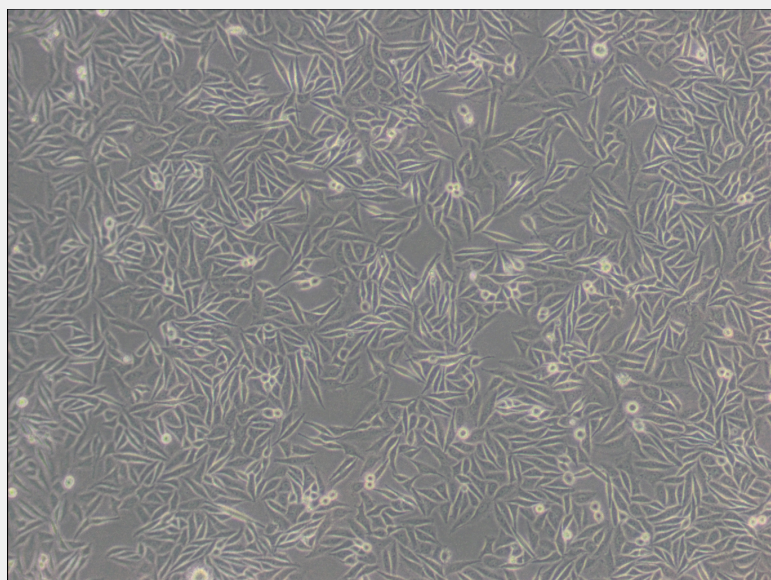
Remove and discard culture medium. Briefly rinse the cell layer with DPBS solution to remove all traces of serum that contains trypsin inhibitor. Add 1.0 to 2.0 mL of Trypsin-EDTA solution to flask and observe cells under an inverted microscope until cell layer is dispersed (usually within 2 to 3 minutes). Cells that are difficult to detach may be placed at 37°C to facilitate dispersal. Add 4.0 to 6.0 mL of complete growth medium and aspirate cells by gently pipetting. Add appropriate aliquots of the cell suspension to new culture vessels.

## Product Description

Electron microscopic observations revealed presence of typical desmosomes at the cell junctions and an abundance of tonofilaments in the cytoplasm. Mycoplasma contamination was detected and eliminated in 1975. The line is reported to contain an integrated human papillomavirus type 16 genome(HPV-16, 1 to 2 copies per cell).







All products are for RESEARCH USE ONLY. Not for diagnostic & therapeutic purposes!