

Anti-Mouse IgA rabbit monoclonal antibody [RM220]

Catalog No: tcra107



Available Sizes

Size: 100ug



Specifications

Application:

WB (nonreduced only), IP, ICC, IHC, FC, ELISA

Species Reactivity:

Mouse

Host Species:

Rabbit

Immunogen / Amino acids:

Mouse IgA

Conjugation:

Unconjugated

Clonality:

Monoclonal

Clones:

RM220

Isotype:

Rabbit IgG

Form:

Liquid

Storage Buffer:

50% Glycerol/PBS with 1% BSA and 0.09% sodium azide

Concentration:

1 mg/mL

Recommended Dilution:

ELISA: 0.005ug/ml - 0.2ug/ml

Immunocytochemistry: 0.5-2ug/ml

Immunohistochemistry (FFPE): 0.5-2ug/ml (1)

Western Blot (non-reduced only): 0.5-2ug/ml

Storage Instruction:

store at -20°C ; avoid repeated thawing/freezing

SwissProt:

P01878

Gene ID:

238447

Purification:

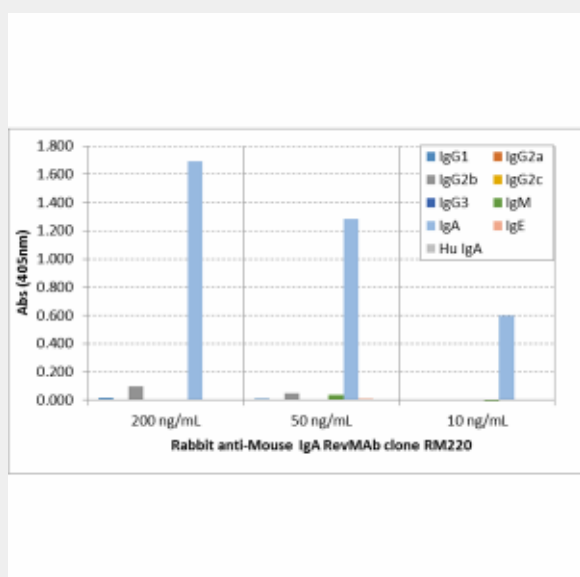
Protein A affinity purified from an animal origin-free culture supernatant

Notes

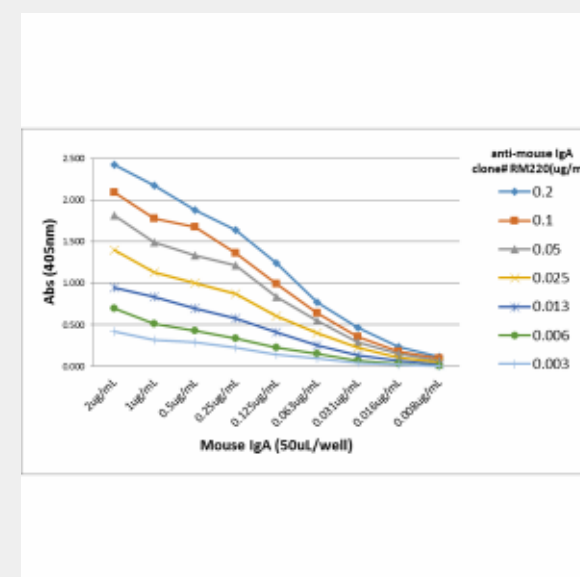
Sold under RevMab BioSciences Labelled.

Product Description

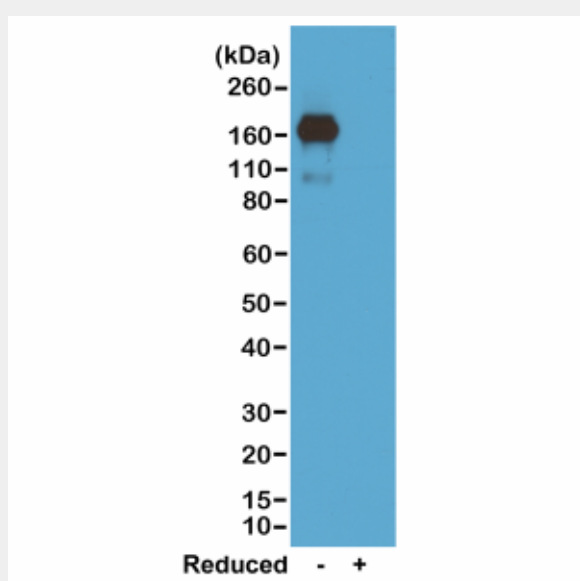
Rabbit monoclonal to Mouse IgA;This antibody specifically reacts to mouse IgA. No cross reactivity with mouse IgG1, IgG2a, IgG2b, IgG2c, IgG3, IgM, IgE, or human IgA.



ELISA of mouse immunoglobulins shows RM220 reacts to mouse IgA. No cross reactivity with mouse IgG1, IgG2a, IgG2b, IgG2c, IgG3, IgM, IgE, or human IgA. The plate was coated with 50 ng/well of different immunoglobulins. 200 ng/mL, 50 ng/mL, or 10 ng/mL of RM220 was used as the primary antibody. An alkaline phosphatase conjugated anti-rabbit IgG as the secondary antibody.



A titer ELISA of mouse IgA. The plate was coated with different amount of mouse IgA. A serial dilution of RM220 was used as the primary antibody. An alkaline phosphatase conjugated anti-rabbit IgG as the secondary antibody.



Western blot of nonreduced(-) and reduced(+) mouse IgA, using 0.5ug/mL of RevMAb clone RM220. This antibody reacts to nonreduced IgA.

All products are for RESEARCH USE ONLY. Not for diagnostic & therapeutic purposes!